

# Welcome!

Social Enterprise Initiative Kick-Off  
September 2023



**Harvard  
Business  
School**

Social Enterprise  
Initiative



Please sign in



**What  
brought  
you here  
today?**

## Today's Kick-off

- Overview of Social Enterprise at HBS
- Ways to connect and engage
- Intro to student clubs
- Connect with each other

## Three Big Takeaways

- Never been a more exciting time for the field
- Incredible array of opportunities here at HBS
- Get involved – get to know us and each other

The HBS Social Enterprise Initiative applies **innovative business practices and managerial disciplines** to drive sustained, **high-impact social change**.

It's grounded in the mission of Harvard Business School and aims to **educate, support, and inspire** leaders **across all sectors** to tackle society's toughest challenges and **make a difference in the world**.

# Social Enterprise Initiative



**Amelia Angella**  
**MBA 2001**  
*Director*



**Margot Dushin**  
*Director of Programs  
(MBA)*



**Sarah Appleby**  
*Assistant Director  
(Executive Education)*



**Yuri Dafonseca**  
*Coordinator*



**Cortney Robinson  
Jones**  
*Special Projects Associate*

## Social Enterprise Faculty

Lynda Applegate

Julie Battilana

Monique Burns Thompspon

Gerald Chertavian

Michael Chu

Rohit Desphande

Christine Exley

Vikram Gandhi

Rebecca Henderson

Nien-hê Hsieh

Archie Jones

Rosabeth Moss Kanter

Elizabeth Keenan

Tarun Khanna

John J-H Kim

Dutch Leonard

John Macomber

Emily McComb

Warren McFarlan

Henry McGee

Kash Rangan

George Riedel

Natalia Rigol

Alvaro Rodriguez-Arregui

Benjamin Roth

Ethan Rouen

William Sahlman

George Serafeim

Debora Spar

Brian Trelstad

Mitch Weiss

Deborah Winshel



Shawn Cole  
Faculty Chair

Areas of Focus



INCLUSIVE BUSINESS

CORPORATE CITIZENSHIP

BUSINESS LEADERSHIP IN THE SOCIAL SECTOR

BUSINESS AT THE BASE OF THE PYRAMID

MICROFINANCE

PUBLIC ENTREPRENEURSHIP



IMPACT INVESTING

VENTURE PHILANTHROPY



HYBRID ORGANIZATIONS

SOCIAL ENTREPRENEURSHIP



K-12 EDUCATION



SOCIAL INNOVATION AND SYSTEMS CHANGE



**MBA**s

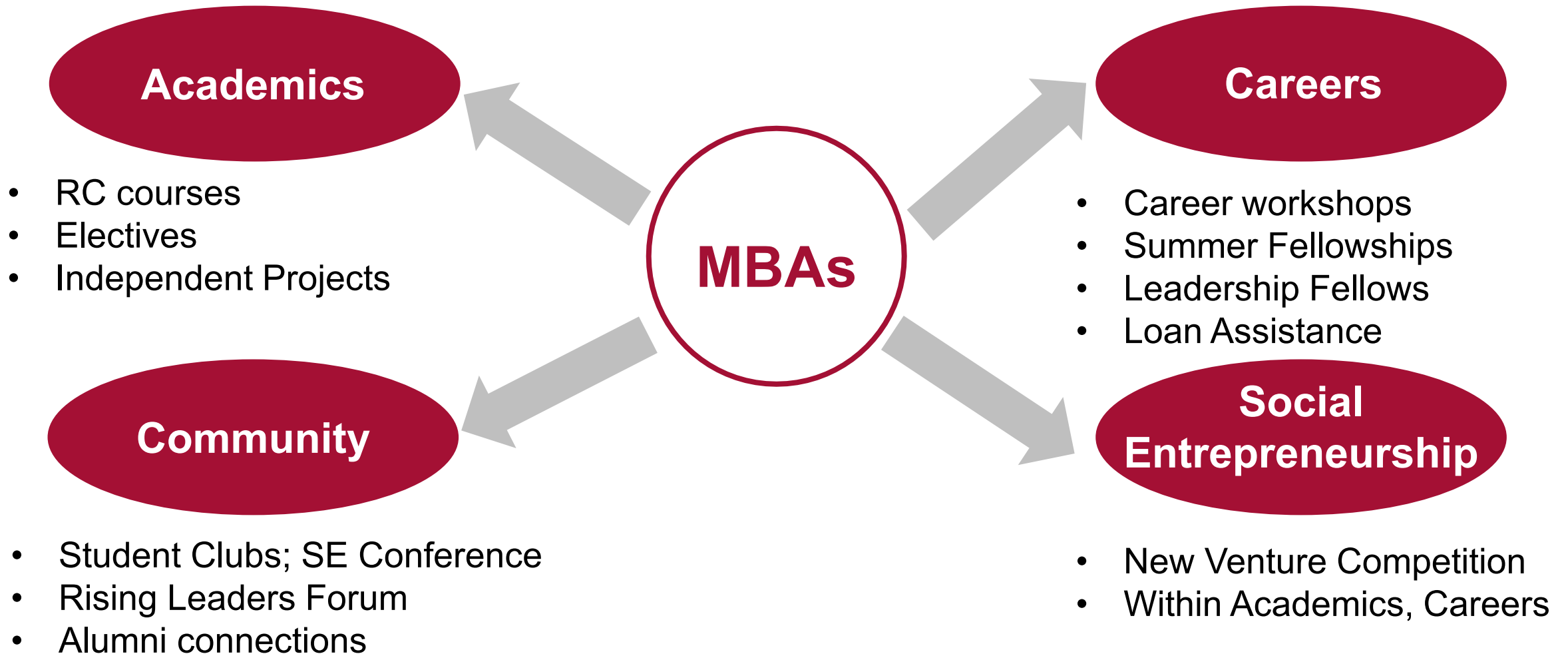
**Faculty**

**Alumni**

**Exec Ed  
participants**

**Leaders  
in the  
Field**

## Getting Involved as an MBA Student



## SEI Students: All of You

- **Pathways:** entrepreneurial ventures, for-profit companies focused on social impact, funding organizations, government agencies, nonprofit organizations
- **Issue areas:** arts, education, economic development, environment, healthcare, human services, international development, and more
- **Locations:** countries and regions around the world

22%

prior experience

38%

with interest



**Required Curriculum (RC):** Leadership and Corporate Accountability; Social Purpose of the Firm; SE cases + topics across full spectrum of courses

### **Elective Curriculum (EC)**

#### **CENTRAL FOCUS**

- Business at the Base of the Pyramid
- Data for Impact
- Field Course: Investing for Impact
- Power and Influence for Positive Impact
- Public Entrepreneurship
- Social Entrepreneurship and Systems Change
- Solving Society's Complex Challenges Using a Systems Approach
- Sustainable Investing
- Transforming Education through Social Entrepreneurship

#### **Independent Projects; Course Papers**

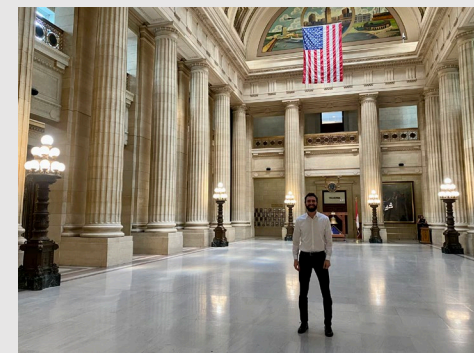
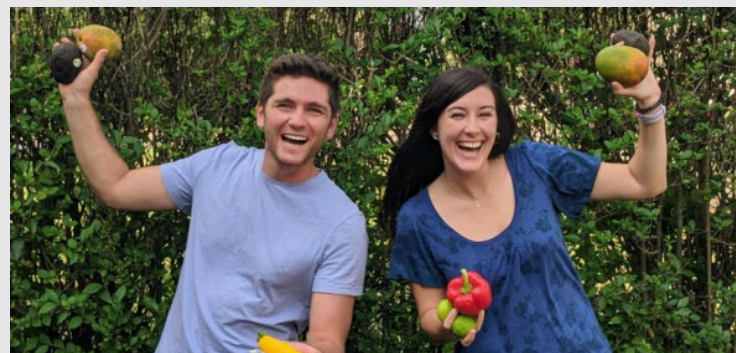
#### **RELATED COURSES**

- Changing the World: Life Choices of Influential Leaders
- Cities, Structures, and Climate
- Entrepreneurial Solutions to the World's Problems
- Field Course: Business of the Arts
- Field Course: Scaling Minority Businesses
- Global Climate Change
- Managing the Future of Work
- Purpose-Driven Marketing
- Reimagining Capitalism
- Risks, Opportunities, and Investments in the Era of Climate Change
- The American Dream and US Higher Education
- The Role of Government in Market Economies

## Summer Fellowship Program

1,800+

since 1982



## HBS Leadership Fellows

286

Leadership Fellows with  
97 organizations since 2001



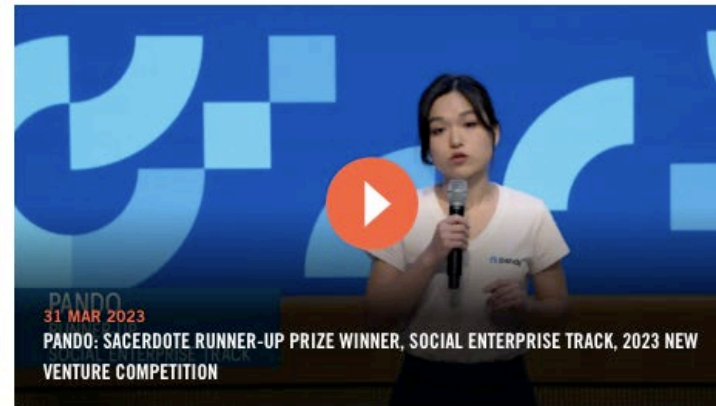
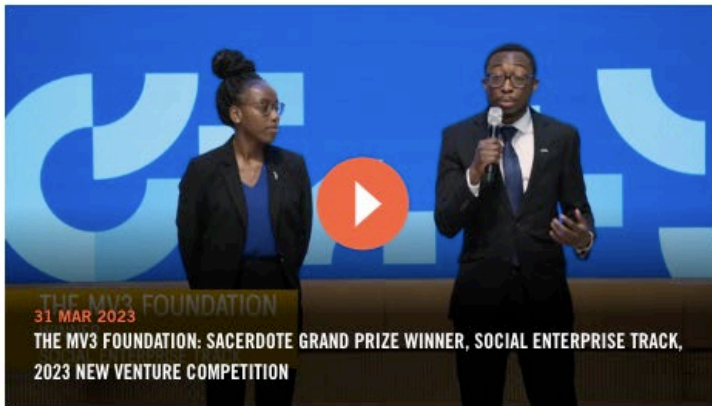
## Social Enterprise Loan Repayment Assistance Program

For eligible grads up to 10 years out

# New Ventures



- Social Enterprise Track includes nonprofit, for-profit, and hybrid business plans
- Explore social entrepreneurship and test ideas for social innovation in a rigorous and supportive environment



- Summer Fellowships
- Elective curriculum
- Independent Projects
- Opportunities at Rock Center for Entrepreneurship, Harvard iLabs, and other parts of Harvard

## Clubs and Community

Social Enterprise Club

Social Enterprise Conference

Consulting for Impact Club

Education Club

Energy & Environment Club

Future of Work Club



Government & Public Policy Club

HBS Volunteer Corps

Health Care Club

Impact Investing Club & Harbus Foundation

Sustainability Club



## Rising Leaders for Social Impact Forum

The Rising Leaders Forum is HBS's premier offering for social impact focused students. Through a deep dive, **our highest potential change leaders** are engaged in **reflection, conversations, tools, and networking** to help them have **impact and lead positive change** in the world.

The forum builds a **robust community** that connects students and alumni who share a passion for social impact; and supports success in the **classroom**, navigating the **unique career path**, and **challenges and opportunities of MBAs in social enterprise**.

**Sign up  
by 9/15!**



# Chronus Alumni-Student Mentorship Platform



This year, the Business and Environment, Healthcare, and Social Enterprise Initiatives are leveraging an online platform called Chronus to facilitate relationships between students pursuing careers in social impact with alumni working in the field.

**Look for an email to sign up in October**

# Opportunities for Engagement

| FIRST YEAR (RC)   | SUMMER  | SECOND YEAR (EC)   | POST-GRADUATION   |
|---|---|--|---|
| <p><b>Academics</b></p> <ul style="list-style-type: none"> <li>▪ Leadership and Corporate Accountability</li> <li>▪ Social Purpose of the Firm</li> <li>▪ Cases across RC courses</li> </ul> <p><b>Careers</b></p> <ul style="list-style-type: none"> <li>▪ Coaching</li> <li>▪ Career programming</li> <li>▪ Presentations, speakers, and recruiters</li> <li>▪ Chronus alumni mentorship platform</li> </ul> <p><b>New Ventures</b></p> <ul style="list-style-type: none"> <li>▪ SE Track of New Venture Competition</li> </ul> <p><b>Clubs and Community</b></p> <ul style="list-style-type: none"> <li>▪ 11 SE related student clubs</li> <li>▪ Rising Leaders Forum</li> </ul> | <p><b>Careers</b></p> <ul style="list-style-type: none"> <li>▪ SE Summer Fellowship Program</li> <li>▪ SE Summer Accelerator</li> </ul> | <p><b>Academics</b></p> <ul style="list-style-type: none"> <li>▪ SE focused and related electives</li> <li>▪ Field-based learning and funding via the SE Independent Project program</li> </ul> <p><b>Careers</b></p> <ul style="list-style-type: none"> <li>▪ Coaching</li> <li>▪ Career programming</li> <li>▪ Presentations, speakers, and recruiters</li> <li>▪ Chronus alumni mentorship platform</li> </ul> <p><b>New Ventures</b></p> <ul style="list-style-type: none"> <li>▪ SE Track of New Venture Competition</li> </ul> <p><b>Clubs and Community</b></p> <ul style="list-style-type: none"> <li>▪ 11 SE related student clubs</li> </ul> | <p><b>Careers</b></p> <ul style="list-style-type: none"> <li>▪ HBS Leadership Fellows</li> <li>▪ HBS Social Enterprise Loan Repayment Assistance Program</li> <li>▪ Other HBS loan support programs for graduating MBAs</li> </ul> <p><b>New Ventures</b></p> <ul style="list-style-type: none"> <li>▪ Alumni Track of New Venture Competition</li> </ul> <p><b>Community</b></p> <ul style="list-style-type: none"> <li>▪ SE Alumni community and programming</li> <li>▪ Local alumni clubs</li> <li>▪ Reunion activities</li> </ul> |

## SEI Resources and Updates

### SEI Website:

[www.hbs.edu/socialenterprise](http://www.hbs.edu/socialenterprise)

### “FYI From SEI” emails

### School-wide communications

- MBA Events Calendar
- myHBS

### Club communication

- weekly newsletters from clubs you sign up for



### **SEI Career Sessions**


- **Careers in Social Enterprise:** September 20
- **Leadership & Innovation in the Public Sector:** September 21
- **Careers in Impact Investing:** September 28
- More to come in October and November

### **Kickoffs for Related Initiatives**

- **Health Care Initiative:** September 14
- **Rock Center for Entrepreneurship:** September 14
- **Business & Environment Initiative:** September 19

## Club Leaders

Social Enterprise Club  
Social Enterprise Conference  
Consulting for Impact Club  
Education Club  
Energy & Environment Club  
Future of Work Club  
Government & Public Policy Club  
HBS Volunteer Corps  
Health Care Club  
Impact Investing Club & Harbus Foundation  
Sustainability Club

A large red oval border encircling the text.

**Learn more  
and sign up at  
reception!**

Continue to connect



**Harvard  
Business  
School**

**Social Enterprise  
Initiative**

**SE Community Conversations**

Community is at the heart of social enterprise at HBS!

Connect with a classmate and share your social enterprise interests and questions.

If you have permission and comfort, please send a quick take-away or insight from the conversation (photos are great too!) to [se@hbs.edu](mailto:se@hbs.edu) and we'll be sharing responses throughout the year.

# Thank you!

Please reach out with any questions.

[www.hbs.edu/socialenterprise](http://www.hbs.edu/socialenterprise)

[se@hbs.edu](mailto:se@hbs.edu)

