

India's Food Supply Chain during the Pandemic

Matt Lowe
G V Nadhanael
Benjamin N. Roth

Working Paper 21-070



India's Food Supply Chain during the Pandemic

Matt Lowe

University of British Columbia

G V Nadhanael

University of British Columbia

Benjamin N. Roth

Harvard Business School

Working Paper 21-070

Copyright © 2020, 2021 Matt Lowe, G V Nadhanael, and Benjamin N. Roth.

Working papers are in draft form. This working paper is distributed for purposes of comment and discussion only. It may not be reproduced without permission of the copyright holder. Copies of working papers are available from the author.

Funding for this research was provided in part by Harvard Business School and Private Enterprise Development in Low-Income Countries (PEDL). The analysis and opinions expressed in this piece are solely those of the authors.

India's Food Supply Chain During the Pandemic

Matt Lowe* G V Nadhanael† Benjamin N. Roth‡

July 31, 2021

Abstract

We document the impact of India's COVID-19 lockdown on the food supply chain. Food arrivals in wholesale markets dropped by 69% in the three weeks following the lockdown and wholesale prices rose by 8%. Six weeks after the lockdown began, volumes and prices had fully recovered. The initial food supply shock was highly correlated with early incidence of COVID-19. We provide evidence that this correlation is due more to state-level lockdown policy variation than local responses of those in the food supply chain. Finally, during the recovery phase, the correlation between the food supply disruption and COVID-19 exposure disappeared, suggesting uniform recovery.

*University of British Columbia.

†University of British Columbia.

‡Harvard Business School. We are grateful for excellent field assistance from Simranjeet Dhir and Toshan Majumdar, research assistance from Pulkit Aggarwal, and financial support from Private Enterprise Development in Low-Income Countries (PEDL). The analysis and opinions expressed in this piece are solely those of the authors.

1 Introduction

Since the COVID-19 pandemic began, one concern has been that lockdowns might be especially damaging in the poorest countries – in these places lockdowns may reduce the spread of coronavirus, but only by simultaneously leaving poor families without cash to spend, and without food to eat. In this paper, we shed light on a particular aspect of this concern: can food supply chains remain functional in the face of a national lockdown, and a growing burden of coronavirus cases? We address this question by documenting the breakdown and subsequent recovery of India’s food supply chain during the first three months of India’s national lockdown.

On March 24, 2020, India announced a strict lockdown for 21 days in response to a surge in COVID-19 cases. According to the World Bank, India’s lockdown was the largest implemented by any country.¹ The lockdown was extended in three additional phases of 14 days each, with each phase accompanied by relaxations in lockdown rules. Following these three additional phases, the central government announced a staggered lifting of the lockdown. Using web-scraped daily data on wholesale volumes and prices for 271 food varieties traded at 1,804 agricultural markets in 24 states of India, we document trends in the supply and prices of food during these phases. Specifically, we estimate the size of the initial shock to food supply and wholesale prices following the lockdown announcement, the extent of the recovery, and the correlation of the shock and the recovery with the spread of the virus.

We describe four findings. First, food arrivals in wholesale markets dropped by 69% in the three weeks following the lockdown, but subsequently recovered, reaching similar levels to those in 2019 by early-May. Second, we estimate dynamic effects of the lockdown on wholesale prices that are similar to the effects on volumes. In particular, while wholesale prices initially increased by 8%, they quickly returned to a downward trend. Third, the initial state-level food supply shock was highly correlated with exposure to COVID-19 – states with more COVID-19 suffered larger drops to food arrivals after the lockdown relative to previous years – but this correlation disappeared during the recovery phase, suggesting that food supply volumes recovered irrespective of the incidence of the virus spread. Fourth and finally, we use within-state variation to unpack the correlation between COVID-19 exposure and the initial supply shock. We find evidence that the correlation is driven by state-level policies, rather than local responses of those in the food supply chain. In particular, districts more exposed to COVID-19 *did not* have larger food supply disruptions than less-exposed districts belonging to the same state. In addition, using state-level declines in mobility as a proxy for policy responses to the pandemic, we demonstrate a strong positive relationship between state-level declines in mobility and the severity of the

¹Karaban and Mozumder (2020). The Oxford COVID-19 Government Response Tracker (<https://covidtracker.bsg.ox.ac.uk>) also shows that the initial lockdown in India was one of the strictest.

food supply shock.

This study contributes to the growing literature on the impact of the COVID-19 shock on the food sector in the developing world (Abay et al. 2020; Adjognon et al. 2020; Aggarwal et al. 2020; Ceballos et al. 2020; Kansime et al. 2021; Mahmud and Riley 2021; Hirvonen et al. 2021). Closest to this paper are the contemporaneous studies of Rawal and Verma (2020) and Varshney et al. (2020). These studies use the same principal data source to study the evolution of food volumes and prices in India during the lockdown. We complement their analyses by extending the sample to cover more food varieties, and more states. This allows us to explore richer patterns between COVID-19 exposure and the health of the food supply chain. In particular, by exploiting both within-state and between-state variation in COVID-19 incidence we attribute the food supply shock largely to state-level policies rather than the voluntary behavioral response of market participants. We also demonstrate that the impacts on the food supply chain are similar in urban versus rural districts, and establish a relationship between state-level mobility patterns and the food supply shock.

Other work in India finds that prices in urban food markets rose 3% in the 28 days post-lockdown (Narayanan and Saha 2021), that supply to a major online retailer fell by 10% (Mahajan and Tomar 2021), and more generally, reports on the food security risks faced in India as a result of COVID-19 (Ceballos et al. 2020; Reardon et al. 2020; Ray and Subramanian 2020; Kesar et al. 2021). Outside of food supply chain concerns, Jain and Dupas (2020) document the impact of the lockdown on India's non-COVID-19 health outcomes and Ravindran and Shah (2020) examine the impact of the Indian lockdown on rates of domestic abuse. More broadly, our work connects to the literature examining the consequences of policy responses to COVID-19 in the developing world (see e.g. Banerjee et al. (2020a) and Ajzenman et al. (2021) on the impacts of public health messaging, and Banerjee et al. (2020b) and Londoño-Vélez and Querubin (2020) on the impacts of emergency cash assistance).

Our work also connects to the more general global debate on whether economic responses to COVID-19 are more policy-driven or more related to voluntary individual responses. This debate informs central questions: does lifting a lockdown cause economic activity to increase? Or will people stay at home regardless of the official lockdown policy in the hope of mitigating personal and social risks? Coibion et al. (2020) estimate that lockdowns account for close to 60% of the decline in the employment to population ratio in the US. Our results suggest that the shock to food supply in India was driven more by lockdown policies, which varied in stringency across states, than by local responses to COVID-19 risk, which also varied dramatically within each state.

The rest of this paper is organized as follows. In the next section, we give an overview of the COVID-19 situation in India, the policy response of both the central and state governments, and the labor supply response of individuals. Thereafter, we describe our data sources. We then present our four empirical

findings. Finally, we give concluding observations.

2 Background and Data

2.1 COVID-19 in India

The COVID-19 virus spread rapidly across the globe in the early months of 2020, forcing the World Health Organisation to declare it a pandemic by early-March. India reported its first case on January 30, 2020, though the initial spread remained contained, with only 500 cases reported by March 23.² Despite the low reported caseload, India responded to the rapid global spread of the virus by announcing a nationwide lockdown on March 24. In an effort to preserve the functioning of the food supply chain, most of the agricultural sector and food markets were exempted from the lockdown. Nevertheless, frictions in inter-state travel and labor shortages posed significant obstacles for the food supply chain.

As the virus began to spread rapidly within the country, the lockdown was extended on April 14 until May 3. The intensity of the lockdown was, however, eased partially. Areas with large COVID-19 outbreaks were designated as hotspots, and within hotspots, containment zones were demarcated where the intensity of virus spread was the highest. Strict lockdowns were implemented in hotspots while non-hotspot areas were allowed to open up necessary activities from April 20. The lockdown was further extended by two-week periods beginning May 3 and May 17, along with more relaxations in non-hotspot areas. Apart from the containment zones, the government started opening up the country from June 1. The virus, however, continued to spread, and by June 30 India had the fourth highest number of positive cases reported (over 585,000) with over 17,000 deaths.³ In terms of cases per capita, however, India had a relatively low rate of confirmed cases, with 0.4 per one thousand population as compared with 7.8 per one thousand in the US (the country with the highest number of confirmed cases as of June 30).⁴

The distribution of confirmed cases was very uneven, with more than half of the confirmed cases reported in six major cities: Mumbai, Delhi, Ahmedabad, Chennai, Pune, and Kolkata. As a result, the response of state-level governments to COVID-19 has varied, with some states, e.g. Punjab and Telangana, extending the lockdown until June 30th, and many beginning their lockdown several days prior to the national lockdown. State-level policies varied on other dimensions as well. For instance, in Delhi, mandis (local agricultural markets) were restricted to operate at half capacity, with vendors

²See <https://coronavirus.jhu.edu/map.html>.

³<https://www.mohfw.gov.in/#> accessed on August 30, 2020.

⁴<https://ourworldindata.org/grapher/total-confirmed-cases-of-covid-19-per-million-people?time=2020-01-30..&country=~IND> accessed on August 31, 2020.

operating on alternate days.⁵ The government of Tamil Nadu placed restrictions on the timings at which trucks could unload deliveries in mandis.⁶ And the government of Maharashtra enforced mandi closures in response to pandemic surges.⁷

One of the major responses to the government measures was a large exodus of migrant laborers from urban centers to rural areas. 40% of India-born men in urban India live in a place different to their birthplace (versus 14% in rural India, Census 2011). Because opportunities to work were scarce, many migrant laborers returned to their locations of origin at the onset of the lockdown. Estimates place this exodus at about 6.7 million people by June 2020 across just the six states of Bihar, Uttar Pradesh, Rajasthan, Madhya Pradesh, Odisha, and Jharkhand,⁸ and 11.4 million people by February 2021 across all states.⁹ This reduced available labor for the food supply chain, often leaving wholesale markets and traders with insufficient workers, especially in the initial days of the lockdown.¹⁰ Since most of the supply chain in India is informal and labor intensive, the repercussions of such a labor shortage can be substantial. Our analysis of the food supply chain is set in this background.

2.2 Data

Our main source of data is the online database set up by the central government’s Ministry of Agriculture. As part of an initiative to enhance transparency and improve price discovery, the Ministry of Agriculture created a network of mandis by connecting them through an integrated scheme for agricultural marketing. The volume of arrivals of each food variety, along with price information (maximum, minimum, and modal traded price), is reported by each mandi to the Agricultural Marketing Network which is consolidated and uploaded to its portal, agmarknet.gov.in, on a daily basis. The data covers 307 varieties (e.g. coconut, beans, tomato), with each variety belonging to one of 15 broad categories.¹¹

Our initial dataset includes all varieties reported to the Agmarknet portal during January 1 to June 30 of 2018, 2019, and 2020. To enable aggregation of volumes across varieties, we include only those products that are measured in tonnes, meaning we exclude those measured in numbers. While all 15 broad

⁵The Economic Times (2020).

⁶The New Indian Express (2020).

⁷Srivastava (2020). For a more thorough discussion of state-level policy variation, see Narayan and Saha (2020).

⁸Mathew (2020).

⁹This data was provided by Shri. Santhosh Kumar Gangwar, Minister of State for Labour and Employment in Indian parliament on February 8, 2021 as an answer to Lok Sabha unstarred question No. 1056.

¹⁰In principle, laborers who returned to their native villages could supply labor in their nearby mandis, reducing the labor supply shock to rural mandis. But frictions due to the lockdown may have made it difficult to establish relationships in new markets. Indeed, in Section 3.1 we find that the food supply shock was similarly severe in rural and urban districts.

¹¹The categories are: Cereals, Spices, Fibre Crops, Oil Seeds, Fruits, Pulses, Forest Products, Other, Vegetables, Dry Fruits, Drug and Narcotics, Oils and Fats, Live Stock and Poultry and Fisheries, Beverages, and Flowers. Except where explicitly mentioned, all groups are included in our analysis.

categories remain represented, this sample restriction excludes 31 of the 307 varieties. Nevertheless, these 31 varieties constitute only 4.1% of the total number of mandi-variety-day-level observations. For our analysis of wholesale prices we use the modal price, which better reflects the general price level than the minimum or maximum price.

Though 2,905 markets have reported products measured in tonnes to Agmarknet at some point during January to June of 2018 to 2020, the number of markets reporting at any one time has varied year-to-year (Figure A1). To get closer to a balanced panel, we restrict our sample only to those mandis that reported arrivals in tonnes at least once during the month of March 2020. This sample restriction leads us to drop a handful of large states, including Bihar and Maharashtra (Table A1). Our final dataset consists of 271 varieties traded at 1,804 markets in 24 states of India.

Despite our sample restrictions, our geographic coverage is representative of India as a whole. Districts with mandis ever reporting data to the Agmarknet portal are remarkably similar on average observables to Indian districts overall (columns 2 and 3, Table A2) – most notably, the 640 Indian districts have a rural share of households of 73% on average, and so do the 508 districts represented by mandis on Agmarknet. More importantly, the 391 districts represented by our 1,804 analysis sample mandis are also similar. Only two exceptions stand out. First, our analysis sample districts are on average slightly more populous than Indian districts overall (2.1 versus 1.9 million people). Second, our analysis sample districts have a lower share of Scheduled Tribes (13 versus 18%). Given that even these two differences are small, our results likely generalize to agricultural markets nationwide.

Importantly, we note that a key limitation of our dataset is that it does not capture food that is traded outside of the mandi supply chain network (e.g. through the direct selling of produce by farmers to customers). Nevertheless, a significant fraction of India's food supply appears to be traded at the 1,804 markets that comprise our analysis sample. For the 18 varieties (among cereals, oil seeds, and commercial crops) for which we have compiled production data, our analysis sample markets covered an average of 25% of nationwide production during 2019/20 (Figure A2). Furthermore, this number is a lower bound on sales coverage, given that not all production is marketed – for example, the marketed surplus ratio (the ratio of marketed output to total output) was 74% for wheat and 84% for rice in 2014/15, the most recent year with data available (Government of India 2019). An overall marketable surplus of 80% would suggest that our mandis cover 31% of India's agricultural sales.

To link supply shocks with variation in COVID-19 exposure, we use data from api.covid19india.org on the number of confirmed cases of coronavirus at the state- and district-level as of April 14, 2020 (the end of Phase 1 of the lockdown) and as of June 30, 2020 (the end of Phase 5). covid19india.org aggregates COVID-19 numbers in real-time across state bulletins, official handles (e.g. Chief Ministers, Health Ministers) and press reports, and uses a team of volunteers to validate the data. We note that *confirmed*

cases differ from the true case count given underreporting and insufficient testing.¹² Nevertheless the relationship between confirmed cases and the health of the food supply chain is informative given that confirmed cases are likely an important input into policy decisions. We return to this point in Section 3.3.

Finally, to link supply shocks with declines in mobility we use Google mobility data.¹³ Google infers mobility from users of its applications who allow it to track their location. The data reports aggregate mobility patterns without revealing the travel data of individual users.

3 The Lockdown and the Response of India’s Food Supply Chain

3.1 Food Arrivals Fell Immediately But Subsequently Recovered

Among the sample of mandis that reported at least once in March 2020, aggregate food arrivals were similar prior to March 24 in 2018 and 2019 as compared with 2020 (Figure 1).^{14,15} Following the lockdown on March 24, 2020, arrivals dropped dramatically as compared with levels in 2018 and 2019, and gradually recovered from Phase 2 of the lockdown onwards. This core pattern is similar for each of six major food groups (Figure A5), suggesting that the recovery was not driven by product-specific government procurement.

To quantify the aggregate patterns in Figure 1 we use variants of the following difference-in-difference specification:

$$\ln(\text{Volume})_{yd} = \alpha_y + \alpha_d + \sum_{t=1}^5 \beta_t \text{Phase}_{yd}^t + \varepsilon_{yd} \quad (1)$$

where $\ln(\text{Volume})_{yd}$ is the log of the total volume of food arrivals in tonnes on calendar date d (e.g. January 1) during year y (either 2019 or 2020). α_y and α_d are year and calendar date fixed effects, respectively, making this a difference-in-difference design where we are comparing the volume change before and after the lockdown began in 2020 with the volume change before and after March 24 in 2019.¹⁶ We include only data from March 1 to June 30 in these regressions, making the “before” period

¹²Related, Anand et al. (2021) estimates that the true number of deaths from COVID-19 in India exceeds the confirmed deaths by an order of magnitude.

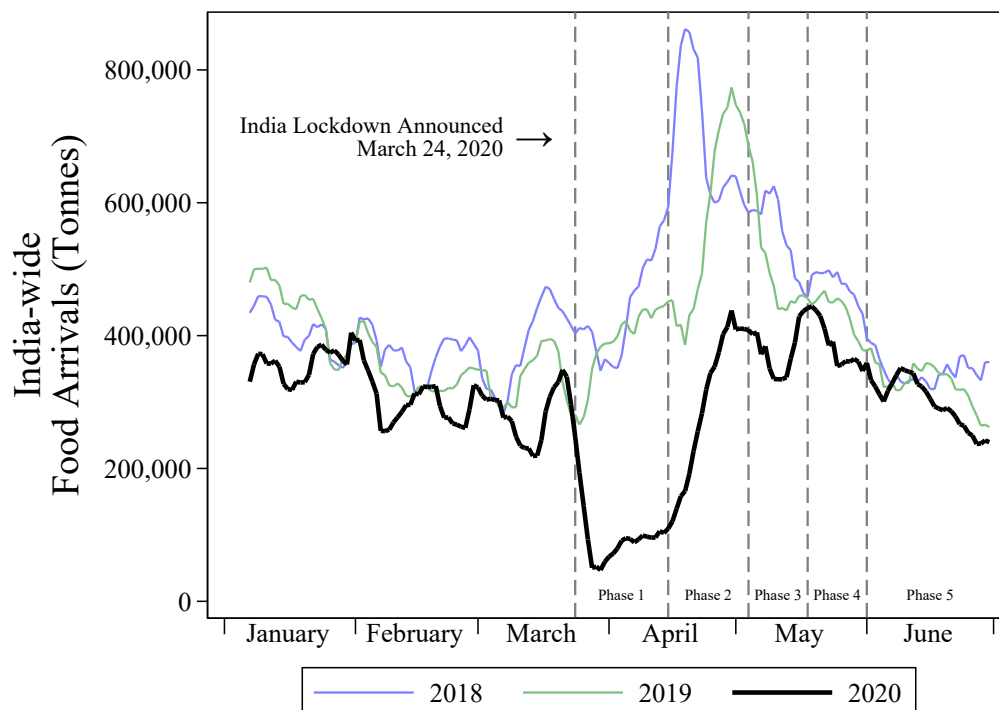
¹³From <https://www.google.com/covid19/mobility/>

¹⁴Wheat accounts for 30.7% of total food volume in our data, and exhibits considerable volatility from year to year (see Figure A3). To confirm that wheat does not drive our results, we replicate all the main tables and figures involving total food volumes in Appendix B, excluding wheat. None of our core results are affected by the exclusion of wheat. We do not replicate our analysis of price trends without wheat, as these analyses are at the product-day level, so wheat does not have an outsized influence.

¹⁵We plot the seven-day moving average to smooth weekly fluctuations in arrivals, given notable dips on Sundays (Figure A4).

¹⁶With only data for 2020 we could estimate a pre-post (or before-after) specification, in which we compare volumes

Figure 1: The Lockdown Caused Wholesale Volumes to Plummet



Notes: The y-axis variable is a seven-day moving average of aggregate tonnes of food arrivals to the 1,804 mandis that reported arrivals in tonnes to Agmarknet at least once in March 2020. The data covers January 1 to June 30, 2018 to 2020. Given that the variable is a seven-day moving average, the first data point shown is January 7 (the average arrivals for January 1 to 7). Source: agmarknet.gov.in.

March 1 to 24. To estimate separate effects for each phase of the lockdown, we include a set of dummy variables for the five phases. Phase_{yd}^1 is a dummy variable equal to one for the period March 25, 2020 to April 14, 2020, and equal to zero otherwise. The remaining dummies are switched on for April 15 to May 3 (Phase_{yd}^2), May 4 to May 17 (Phase_{yd}^3), May 18 to May 31 (Phase_{yd}^4), and June 1 to June 30 (Phase_{yd}^5), with all of these dates in 2020 only. For specifications at the day-level, we use robust standard errors, while for specifications at the mandi-day-level, we cluster standard errors at the mandi-level.

Phase 1 of the lockdown reduced nationwide food arrivals by 69%¹⁷ (column 1, Table 1), with a before and after March 24, 2020. The key drawback with such a specification is that changes after March might reflect seasonality in volumes, rather than the causal effect of the lockdown and associated COVID-19 shocks. By including the 2019 data, we “difference out” this seasonality (formally by including calendar date fixed effects), making our estimates difference-in-difference estimates. These estimates essentially ask how much bigger the volume drop was after March 2020 when compared with that after March 2019, and attribute this difference to the effects of the pandemic. Put another way, we implicitly estimate the counterfactual volumes (in the absence of the pandemic) after March 24, 2020 to be those implied by applying the seasonality in 2019 to the levels of volumes at the start of 2020.

¹⁷The Phase t volume fall in % is estimated as $100 \times (1 - e^{\beta t})$.

Table 1: The Lockdown’s Impact on Food Arrivals

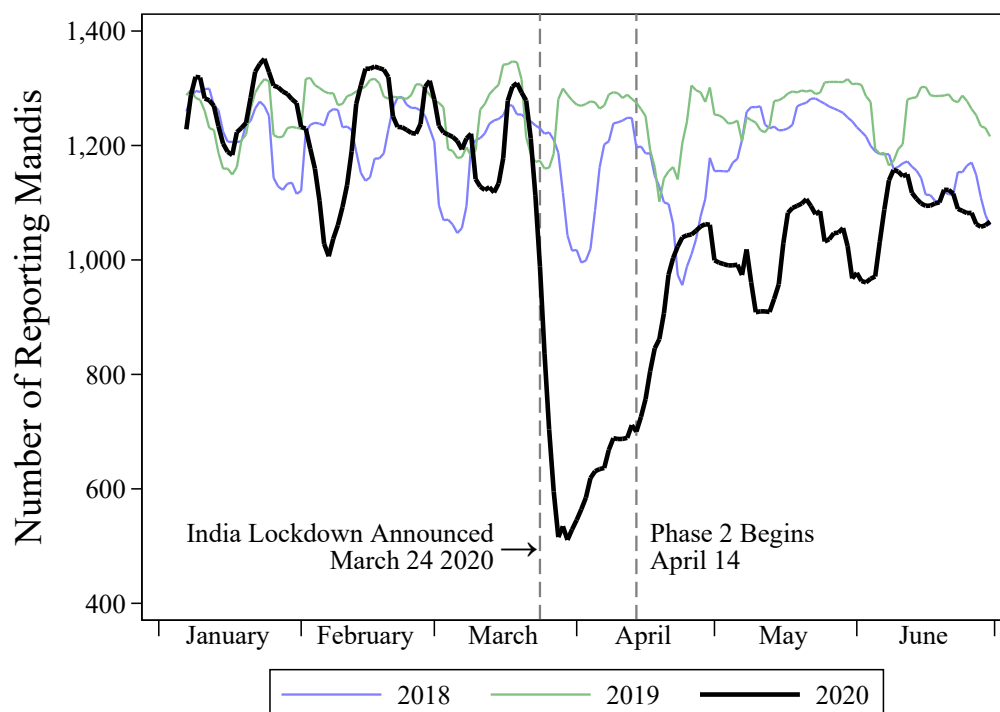
	ln(Food Arrivals)		ln(Functioning Mandis)		ln(Food Arrivals)	
	(1)	(2)	(3)	(4)	(5)	(6)
Phase 1 (Mar 25-Apr 14)	-1.17*** (0.30)	-1.18*** (0.24)	-0.54*** (0.14)	-0.51*** (0.12)	-0.58*** (0.04)	-0.59*** (0.04)
Phase 2 (Apr 15-May 3)	-0.22 (0.26)	-0.20 (0.23)	-0.07 (0.14)	-0.02 (0.13)	-0.17*** (0.04)	-0.16*** (0.04)
Phase 3 (May 4-May 17)	0.17 (0.32)	0.16 (0.28)	-0.12 (0.19)	-0.13 (0.17)	0.18*** (0.04)	0.21*** (0.04)
Phase 4 (May 18-May 31)	0.30 (0.33)	0.29 (0.28)	-0.10 (0.19)	-0.11 (0.16)	0.27*** (0.04)	0.31*** (0.04)
Phase 5 (Jun 1-Jun 30)	0.40 (0.26)	0.40* (0.22)	0.06 (0.14)	0.08 (0.12)	0.21*** (0.04)	0.31*** (0.03)
Observations	240	360	240	360	260181	388382
Sample Period	2019-20	2018-20	2019-20	2018-20	2019-20	2018-20
Year Fixed Effects	Yes	Yes	Yes	Yes	Yes	Yes
Date Fixed Effects	Yes	Yes	Yes	Yes	Yes	Yes
Mandi Fixed Effects	No	No	No	No	Yes	Yes

Notes: The unit of observation is a day in columns 1 to 4, and a mandi-day in columns 5 and 6. The regressions include data from March 1 to June 30 for each year (either 2019-2020 or 2018-2020), with the exception of national holidays (Republic Day and Holi). Robust standard errors in columns 1 to 4, standard errors clustered at mandi-level in columns 5 and 6. The outcome for columns 1 and 2 is the natural logarithm of the tonnes of nationwide food arrivals to mandis that reported at least once in March 2020. The outcome for columns 3 and 4 is the natural logarithm of the number of functional (i.e. reporting) mandis among the sample relevant for columns 1 and 2. The outcome for columns 5 and 6 is same as that for columns 1 and 2, though measured at the mandi-day-level. *** p<0.01, ** p<0.05, * p<0.1.

nearly identical estimated drop when we also include data from 2018 in the “control group” (column 2). Volumes subsequently recovered – the Phase 2 fall is only 20% (column 1), while each of the coefficients for Phase 3 to 5 are actually positive, though not significant, in both columns 1 and 2 (with the exception of Phase 5 in column 2, significant at the 10% level). These regression results show that aggregate volumes fully returned to normal levels by early-May, and even somewhat exceeded normal levels by June.

The large volume reduction during Phase 1 could reflect two margins: mandis closing completely (the extensive margin) or mandis remaining open but at lower capacity (the intensive margin). We find evidence for both margins. The number of functional mandis fell by 39 to 42% during Phase 1 (columns 3 and 4, Table 1, and visualised in Figure 2), showing that the extensive margin drove some of the volume

Figure 2: The Number of Functioning Mandis Plummeted and Then Recovered



Notes: The y-axis variable is a seven-day moving average of the number of mandis that reported any data to Agmarknet on each date, among the 1,804 mandis that reported arrivals in tonnes to Agmarknet at least once in March 2020. The data covers January 1 to June 30, 2018 to 2020. Given that the variable is a seven-day moving average, the first data point shown is January 7 (the average number of reporting mandis for January 1 to 7). Source: agmarknet.gov.in.

reduction.¹⁸ These extensive margin effects are potentially more damaging than intensive margin effects – extreme food insecurity is presumably less likely if all markets remaining functioning, though at lower capacity, than if markets in some locations shutdown completely, with other locations functioning at normal levels.

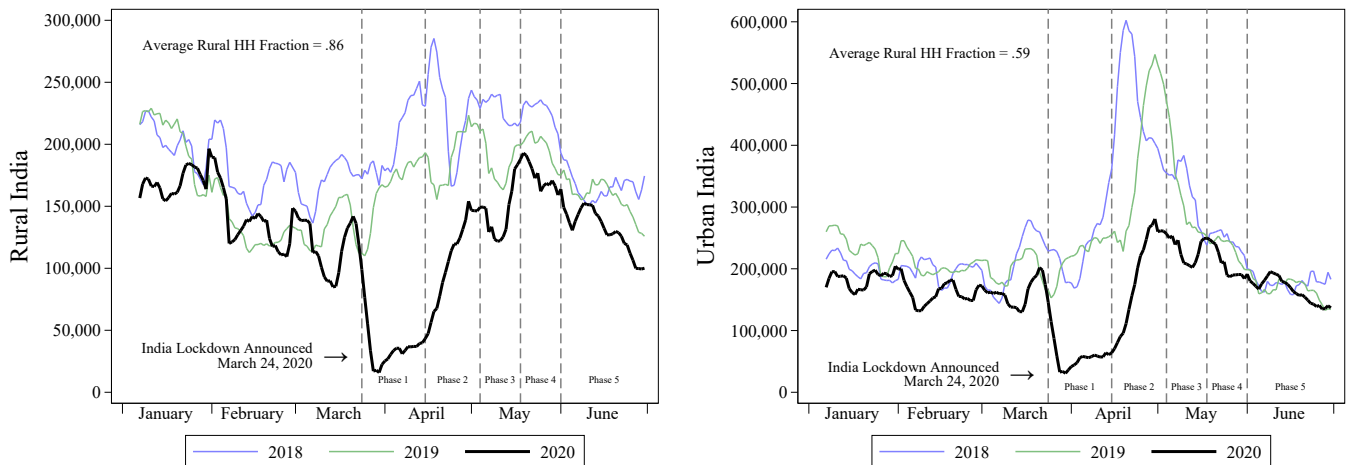
To isolate intensive margin effects, we aggregate food arrivals to the mandi-day-level, and re-run the difference-in-difference specification with mandi fixed effects. Given that the outcome is the natural logarithm of arrivals, any non-functional mandi-days are dropped from the regression. As a result, the

¹⁸One important assumption we make here is that effects on the number of functioning mandis are given by our estimated effects on the number of *reporting* mandis. If the reporting itself (holding constant whether the mandi was functioning) was negatively impacted by the lockdown, we would overestimate the fall in functionality that followed the lockdown. We think our assumption is reasonable given two pieces of evidence that non-reporting mandis are likely non-functioning. First, other experts (e.g. [Rawal and Verma 2020](#)) and Government of India officials themselves report the number of functional mandis as the number of mandis reporting data to Agmarknet. Second, the Ministry of Agriculture states that mandis that are part of the Agmarknet scheme are fully computerized and the dataflow is nearly automatic, suggesting that reporting is straightforward conditional on having data to report.

coefficients can be interpreted as the effects on mandi-level volumes conditional on the mandi remaining open. When considering only the intensive margin, volumes fell by 44% during Phase 1 (columns 5 and 6, Table 1), with a similar pattern of recovery, including significantly higher volumes than normal during Phases 3 to 5.

While we see effects at both the extensive and intensive margins, we might expect effects to vary spatially. Given that high population density facilitates the transmission of COVID-19, one hypothesis would be that the volume shock is more severe at mandis in more urban districts. In fact, the phase-wise patterns of shock and recovery are similar in urban and rural districts (Figure 3). If anything, we estimate a slightly larger Phase 1 volume shock in the more *rural* districts, though we cannot reject that the Phase 1 effects are equivalent in rural and urban districts at conventional levels (Table A3). These results suggest that local COVID-19 risk, which is higher in urban areas, may not be a key driver behind supply disruptions – a theme we return to more systematically in Section 3.3.

Figure 3: Food Arrivals to Urban vs. Rural India



Notes: The y-axis variable is a seven-day moving average of aggregate tonnes of food arrivals to the 1,804 mandis that reported arrivals in tonnes to Agmarknet at least once in March 2020. Rural India includes any mandis residing in a district with an above-median share of rural households in the 2011 Census, with Urban India including all other mandis. The data covers January 1 to June 30, 2018 to 2020. Given that the variable is a seven-day moving average, the first data point shown is January 7 (the average arrivals for January 1 to 7). Source: agmarknet.gov.in.

Drivers of the Volume Shock. To understand what drove the initial volume shock we draw on a set of qualitative interviews with wholesale traders in Delhi, and information from publicly available sources.

A sudden fall in the volume of arrivals could be due to a fall in demand or issues pertaining to the supply chain. Supply-side issues appear to have been important contributors. First, uncertainty about the rules on inter-state travel made it cumbersome to transport produce across state borders. Border closures,

extra layers of inspection and documentation requirements, and a lack of clarity on the rules regarding the transport of agricultural produce created uncertainty for truck drivers.¹⁹ Inability to find paid work to transport produce added to these frictions. Secondly, at the market level, a sharp fall in the supply of labor, driven by the exodus of migrant laborers from urban areas to their native places, reduced the pace at which trucks could be loaded and unloaded. A shortage of ancillary workers, e.g. book keepers, also impacted the daily functioning of the markets.²⁰

Constraints faced at the last mile of the supply chain by retail vendors also played a part in reducing transaction volumes. Rules on social distancing made many retail markets non-functional in urban areas, and retail vendors had to resort to alternative business models – e.g. selling in multiple neighborhoods in the same day – which increased effort costs and reduced volumes. Many other retail vendors decided not to operate at all.

The recovery of wholesale volumes since mid-April 2020 is significant given these supply-side vulnerabilities. After the initial hiatus, inter-state movement of agricultural goods recovered as policies to ease restrictions on the cross-state movement of agricultural goods were put in place.²¹ The central government issued directives to free the inter-state movement of vehicles carrying essential commodities and worked in coordination with State Agricultural Marketing Boards to ensure the smooth movement of agricultural goods across state borders.²² In addition, wholesale markets adapted by resuming operations with physical distancing and other measures to limit the spread of the virus. For example, in Asia’s largest wholesale fruit and vegetable market in Delhi, Azadpur mandi, traders with odd- and even-numbered sheds ran business on alternate days, vegetables and fruits were sold at separate times, and limits on the number of trucks that could be operated by each individual trader were introduced.²³

3.2 Wholesale Prices Increased and Then Returned to a Downward Trend

A return to pre-lockdown food volumes may still be consistent with a threat to food security if prices are higher. To explore this, we use an event study approach to compare the evolution of wholesale prices in 2020 with 2018 and 2019. This year-by-year event study approach differs from the analysis in Table 1 in that we do not explicitly estimate a difference-in-difference effect of the pandemic. We change the approach when considering prices because the strong autocorrelation in prices makes the parallel trends assumption unreasonable. As a result, our analysis of prices is more descriptive in nature than our

¹⁹Hussain (2020).

²⁰Mishra and Pillai (2020).

²¹See <https://pib.gov.in/PressReleaseDetail.aspx?PMO=3&PRID=1608009> accessed on July 20, 2020.

²²See <https://pib.gov.in/PressReleaseDetail.aspx?PRID=1616771> accessed on July 20, 2020.

²³The Economic Times (2020).

analysis of volumes.

We estimate the following specification separately for each of the three years:

$$\ln(\text{Modal Price}_{smfd}) = \alpha_{smf} + \sum_{t=-11}^{-1} \beta_t^{\text{pre}} \text{Week}_d^t + \sum_{t=1}^{14} \beta_t^{\text{post}} \text{Week}_d^t + \varepsilon_{smfd} \quad (2)$$

where $\ln(\text{Modal Price}_{smfd})$ is the natural logarithm of the modal price of food variety f in mandi m in state s on calendar date d . α_{smf} are state-by-mandi-by-food variety fixed effects. Week_d^t is a dummy variable equal to one if date d belongs to the t^{th} week after March 24 – for example, Week_d^1 is equal to one for March 25 to 31, while the first and last weeks are January 1 to 7 (Week_d^{-11}) and June 24 to 30 (Week_d^{14}), respectively. The omitted category is Week_d^0 , covering March 18 to 24. From this specification we estimate pre-lockdown trends in prices (β_t^{pre}) and post-lockdown trends (β_t^{post}), holding constant the food variety and location, and implicitly conditioning on availability of the variety.²⁴ We can then compare these estimated trends with the trends estimated for 2018 and 2019.

Wholesale prices did not change noticeably around March 25 in 2018 or 2019, while in 2020 prices jumped sharply by 8% (Figure 4). The increase suggests that the sudden fall in supply was not matched by a commensurate fall in demand. This price spike was however short-lived – four weeks after the lockdown began, price levels were similar to those immediately prior to the lockdown. Following this, wholesale prices returned to a downward trend, such that prices were 5 to 10% lower than pre-lockdown levels toward the end of Phase 5.²⁵ In short, prices were affected similarly to volumes (Figure 1) – an initial shock during Phase 1 followed by a return to normality during the subsequent lockdown phases.²⁶

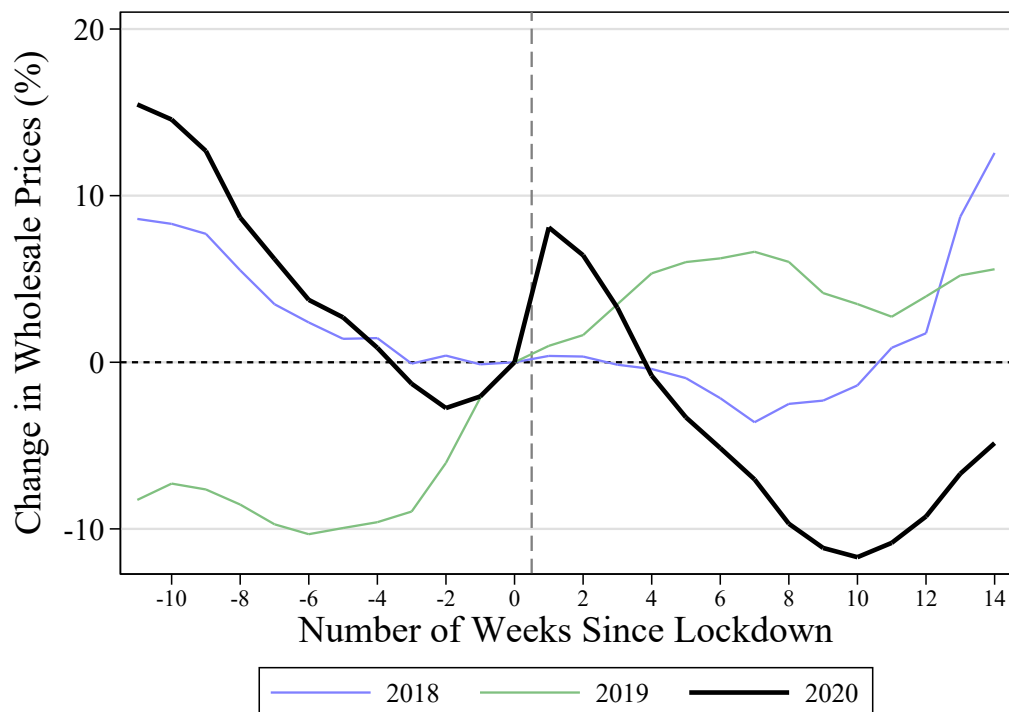
While our analysis considers wholesale prices, evidence for urban areas from [Narayanan and Saha \(2021\)](#) suggests that our findings may also hold for retail prices – they find that the retail price markup over wholesale prices remained fairly constant during the lockdown period.

²⁴One caveat is that with non-functional markets (Figure A1), sometimes food was not available at all during the lockdown, making the prices of some food varieties effectively infinite. This means that our analysis here understates the effective lockdown-induced increase in wholesale prices, given that we study only the effects on prices conditional on availability.

²⁵One possible explanation for the lower price level by Phase 5, other than that of a return to trend, could be that while supply rebounded, demand remained low, placing downward pressure on prices.

²⁶The pattern of rising wholesale prices at the onset of the lockdown holds for most of the major commodity groups (Figure A6), with the exception of spices, which did not see a lockdown-induced price increase at all. One possible explanation is that the non-perishability and relative non-necessity of spices meant that demand was more elastic than it was for other commodity groups and therefore a supply disruption did not lead to major changes in prices. However, we do not find strong evidence for heterogeneity in the lockdown-induced price increase by perishability overall (Figure A7). While the 2020 wholesale price trends for (manually-classified) perishables are more volatile than those for non-perishables, both product categories see a similar short-term spike in prices after the lockdown.

Figure 4: After an Initial Increase in Wholesale Prices, Prices Returned to Trend



Notes: The figure plots the percentage change in wholesale prices implied by the year-by-year estimates from equation 2. Specifically, the pre-lockdown y-axis variable is $100 \times (e^{\beta_i^{\text{pre}}} - 1)$ for $t \in \{-11, -10, \dots, -2, -1\}$, while the post-lockdown variable is $100 \times (e^{\beta_i^{\text{post}}} - 1)$ for $t \in \{1, 2, \dots, 13, 14\}$. The sample comprises only those mandis that reported data at least once in March 2020.

3.3 State-Level Food Supply Disruptions Versus Coronavirus Spread

An important question is whether the supply chain disruption was driven more by state-level lockdown policies or by local behavioral responses. If the latter, continued virus transmission would disrupt supply chains even in the absence of state-mandated lockdowns. We approach this question in two main steps. First, we correlate the evolution of food arrivals at the state-level with the state-level coronavirus caseload. We will show that the initial disruption was highly positively correlated with coronavirus at the state-level. Second, we use *within*-state variation to unpack the correlation, and find the correlation between district-level COVID-19 incidence and food supply disruption is neither economically nor statistically significant, indicating that the relationship is not driven by local responses to COVID-19 exposure. Finally, utilizing the decline in state-level mobility as a proxy for state-level policy, we show a strong positive relationship between decline in mobility and the food supply disruption. We conclude that state-level policy responses

are more likely responsible for the food supply shock rather than voluntary individual responses.

It is important to note that the confirmed COVID-19 case counts differ from the true COVID-19 case counts due to underreporting and insufficient testing, and that the extent of undercounting may differ by state. Nevertheless, confirmed COVID-19 case counts represent the best information about the severity of the pandemic available to policymakers and market participants. Thus the analysis to follow can be viewed as investigating the relationship between (potentially mistaken) views about the severity of the pandemic and the health of the food supply chain.²⁷

To analyze the relationship between food supply and confirmed COVID-19 cases at the state level, we first estimate the size of the volume shock for each state, separately for the first phase of the lockdown versus the subsequent four phases of the lockdown. This way we broadly split the post-lockdown period into the “shock” phase and the “recovery” phase (as is clear in Figure 1 and Table 1). We use the following specification for each state s :

$$\ln(\text{Volume})_{yd}^s = \alpha_y^s + \alpha_d^s + \gamma^s \text{Phase}_{yd}^1 + \theta^s \text{Phase}_{yd}^{2-5} + \varepsilon_{yd}^s \quad (3)$$

which differs from equation 1 in two ways. First, the s super-scripts indicate that this regression is run state-by-state for state-specific coefficients. Second, we replace the dummy variables for each of the Phases 2 to 5 with Phase_{yd}^{2-5} , a dummy variable equal to one for the entire post-Phase 1 period (April 15 to June 30). Importantly, the outcome is now the natural logarithm of *state*-level food arrivals on a particular day, rather than that of nationwide food arrivals. We again use data only from March 1 to June 30, in 2019 and 2020, and estimate effects for 17 states with consistent data – those with at least 10 mandis on average reporting daily data during each of the months from March to June in 2019, and from January to March in 2020. These 17 states cover 885 million people, or 73% of India’s population as of the 2011 census.²⁸

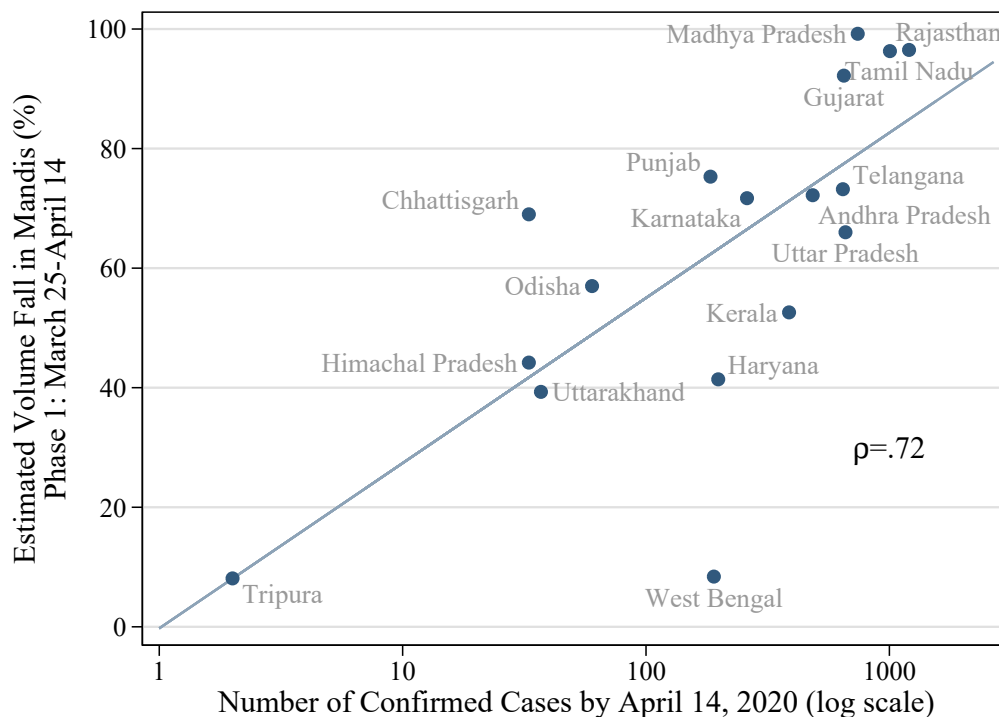
The Phase 1 volume fall at the state-level ($100 \times (1 - e^{\hat{\gamma}^s})$) is strongly positively correlated with the log number of confirmed cases of coronavirus as of the end of Phase 1 ($\rho = 0.72$, $p = 0.001$, Figure 5). In fact, the log number of confirmed cases of coronavirus alone explains over half of the variation in the state-level volume shocks ($R^2 = 52\%$). While the lockdown was national, the impact on essential food supply was more severe in regions which had a higher incidence of the virus.

The picture that emerges in the period starting in Phase 2 is, however, quite different. The state-level

²⁷For a discussion of related issues, see [Abay et al. \(2021\)](#).

²⁸These 17 states are Andhra Pradesh, Chattisgarh, Gujarat, Haryana, Himachal Pradesh, Karnataka, Kerala, Madhya Pradesh, Odisha, Punjab, Rajasthan, Tamil Nadu, Telangana, Tripura, Uttar Pradesh, Uttarakhand, and West Bengal. The seven states (or union territories) that are dropped relative to our previous 24-state analyses are: Goa, Jammu and Kashmir, Jharkhand, Meghalaya, Nagaland, NCT of Delhi, and Pondicherry (Table A1).

Figure 5: States With More Coronavirus Cases Had Bigger Supply Chain Disruptions During Phase 1



Notes: The y-axis is the estimated Phase 1 volume fall for each of 17 states, where the estimate is $100 \times (1 - e^{\hat{r}^{\hat{\rho}}})$ using estimated coefficients from equation 3. The x-axis is the number of confirmed cases of coronavirus by the end of Phase 1 (April 14), from api.covid19india.org. ρ is Pearson's correlation coefficient between the estimated Phase 1 volume fall and the natural logarithm of the number of confirmed cases by April 14, 2020.

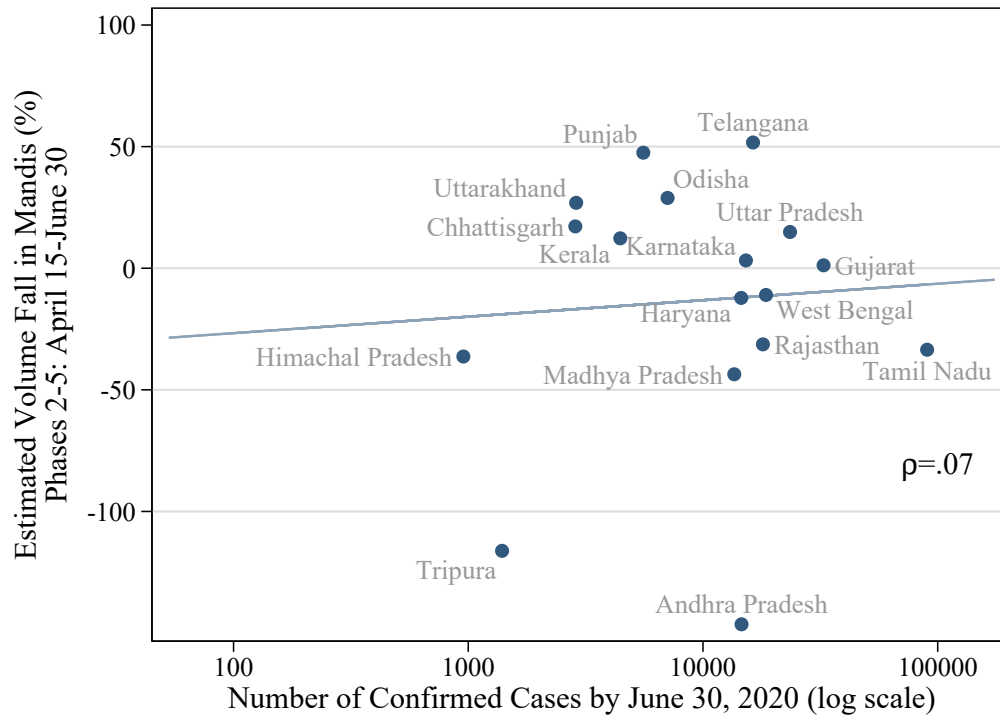
volume fall during Phases 2 to 5 is uncorrelated with the coronavirus caseload as of the end of Phase 5 ($\rho = 0.07$, $p = 0.8$, Figure 6). This shows that the nationwide supply recovery visualized in Figure 1 does not mask heterogeneity across states with more versus less coronavirus – in essence, volumes recovered regardless of the spread of coronavirus.

3.4 Is the Supply Disruption-COVID-19 Relationship Due to State-Level Policies or Local Responses?

There are two main factors that would lead to a correlation between the initial food supply disruption and the state-level incidence of coronavirus. First, states with more coronavirus introduced stricter lockdown policies with greater efforts at enforcement. These policies could have disrupted the supply chain.²⁹

²⁹While we do not directly observe state-level lockdowns in our data, we utilize declines in state-level mobility, measured via Google mobility data, to proxy for state-level lockdowns. Figure A8 demonstrates a strong relationship between state-level

Figure 6: Volume Shocks Were Not Correlated With Coronavirus Cases After Phase 1



Notes: The y-axis is the estimated Phase 2-5 volume fall for each of 17 states, where the estimate is $100 \times (1 - e^{\hat{\theta}^s})$ using estimated coefficients from equation 3. The x-axis is the number of confirmed cases of coronavirus by the end of Phase 5 (June 30), from api.covid19india.org. ρ is Pearson's correlation coefficient between the estimated Phase 2-5 volume fall and the natural logarithm of the number of confirmed cases by June 30, 2020.

Second, even holding state-level policies constant, people could voluntarily change their behavior in response to a high local incidence of coronavirus. For example, rather than being deterred by state-level policies, people might voluntarily restrict their labor supply out of fear of contracting the disease. Distinguishing between the two factors matters – if voluntary individual responses are most important, the lifting of lockdown policies would not reliably restore the functioning of food supply chains.

We look at this question by examining within-state variation in food supply and COVID-19 intensity. If state-level policy variation alone is responsible for the correlation between COVID-19 intensity and the disruption of the food supply, then the relationship should disappear in a within-state analysis. However, if the disruption is driven by voluntary behavioral responses, then the correlation should persist even using within-state variation. In what follows we demonstrate that there is no economically or statistically significant correlation between the food supply shock and COVID-19 intensity at the within-state level

COVID-19 incidence and mobility reductions as of April 14 (Phase 1 of the national lockdown).

and therefore the food supply shocks are most likely due to state-level policy variation.³⁰ At the close of this section we provide a more direct form of evidence that state-level policy is responsible for the food supply shock. Namely, we demonstrate that declines in mobility, measured using Google mobility data, are strongly correlated with food supply shocks at the state level.

We begin with our analysis of district-level data to estimate the evolution of food supply in districts with more versus less coronavirus exposure. Earlier, we used a difference-in-difference specification (equation 1) to estimate the effect of the lockdown as the additional fall in volumes post-March 24 in 2020 relative to 2019. Now we test whether this difference-in-difference effect is larger in districts with more exposure to COVID-19. This amounts to a triple-difference approach, in which the triple interaction term is between (i) post-March 24, (ii) the year 2020, and (iii) confirmed COVID-19 cases at the district-level. More formally, we estimate:

$$\begin{aligned} \operatorname{arcsinh}(\text{Volume}_{xyd}) &= \alpha_{xd} + \alpha_{xy} + \alpha_{dy} \\ &+ \phi_1 \left(\operatorname{arcsinh}(\text{COVID-19 Cases}_x) \times \text{Phase}_{yd}^1 \right) \\ &+ \phi_2 \left(\operatorname{arcsinh}(\text{COVID-19 Cases}_x) \times \text{Phase}_{yd}^{2-5} \right) + \varepsilon_{xyd} \end{aligned} \quad (4)$$

where Volume_{xyd} is the total quantity of food arrivals in tonnes to district x during year y on calendar date d . Here we take the inverse hyperbolic sine, rather than the natural logarithm, of Volume_{xyd} , given that 18% of our analysis sample observations at the district-day-level are zero-valued. As is standard with triple-difference specifications, we include all possible two-way interactions: α_{xd} are district-by-calendar date fixed effects, α_{xy} are district-by-year fixed effects, and α_{dy} are date fixed effects.³¹ These two-way interactions fully absorb the overall difference-in-difference effect of the lockdown, meaning our focus in this specification is only on estimating the *differential* effect of the lockdown in high- versus low-exposure districts.

COVID-19 Cases_x is the number of confirmed coronavirus cases in district x by the end of Phase 1 (April 14, 2020). Given that 166 of our 399 analysis sample districts had zero confirmed cases of COVID-19 by April 14, we again take the inverse hyperbolic sine of this variable. Phase_{yd}^1 and Phase_{yd}^{2-5} are as defined earlier. We cluster standard errors at the district-level.

$\hat{\phi}_1$ is our estimate of the *additional* effect of Phase 1 of the lockdown on volumes in COVID-19 affected districts relative to unaffected districts, while $\hat{\phi}_2$ is the estimate for Phases 2 to 5. Given the inverse

³⁰We note that policy can vary at the district-level as well. Nevertheless, the fact that we find no evidence of a relationship between district-level COVID-19 incidence and the food supply shock indicates that neither district-level policy nor voluntary individual withdrawal of labor supply are responsible for the shocks.

³¹Equivalent to calendar date-by-year fixed effects.

hyperbolic sine transformations on the left- and right-hand-side, these coefficients can be interpreted as elasticities for large enough values of Volume and COVID-19 Cases (Bellemare and Wichman 2020).

We estimate three variants of this specification. First, we replace $\text{arcsinh}(\text{COVID-19 Cases}_x)$ with $\text{arcsinh}(\text{COVID-19 Cases}_s)$ where s denotes the state that district d belongs to. This initial specification aims to replicate the strong positive correlation in Figure 5 – showing that districts that belong to states with more COVID-19 suffered a larger supply shock during Phase 1. In the second variant we estimate equation 4 itself. In doing so, we test whether districts with more COVID-19 themselves suffered a larger supply shock. In the third variant, we add state-date fixed effects (α_{sdy}), fully absorbing any time-varying state-level policy (or even non-policy) variation. This specification allows us to estimate the different effects of the pandemic on affected versus unaffected districts while only making comparisons within the same state.³²

Before turning to the three specifications described, we first replicate the negative effects of the lockdown on supply (e.g. as in column 1, Table 1) using the district-day-level data.³³ Consistent with our earlier results, food arrivals to districts dropped by 86% during Phase 1 of the lockdown (column 1, Table 2, compared with a 69% drop in column 1, Table 1), and recovered fully during Phases 2 to 5.

The Phase 1 disruption was larger in COVID-19-affected states ($p < 0.01$, column 2, Table 2), consistent with the strong positive correlation between caseload and state-level supply shocks in Figure 5. Specifically, the point estimates imply that a doubling of state-level cases by April 14 is associated with a negative supply shock that is 33% larger.

Strikingly, the correlation between COVID-19 exposure and supply disruption disappears when we instead define exposure at the district-level (column 3, Table 2), and remains small and not statistically significant when we exploit only within-state variation (column 4). These results suggest that the strong relationship between supply disruptions and COVID-19 exposure is not driven by local reactions – for example, the withdrawal of labor due to local fears of catching coronavirus. Instead, the pattern of results is most consistent with supply disruptions being driven by state-led reactions, with states with more COVID-19 reacting more aggressively.³⁴

We note that, much as in the case of state-level confirmed COVID-19 cases, district-level COVID-19 cases are very likely to be measured with error, and this error may vary systematically across districts. For instance, some districts may not have testing facilities, and people may cross district boundaries to

³²In support of the key assumption for a triple-difference specification, pre-trends are parallel for each of these three variants of our core specification (Table A5).

³³Note that our district-level estimates need not coincide with our India-level estimates given that our district-level regressions are unweighted.

³⁴Phase 2 to 5 district-level supply disruptions are also not mediated by COVID-19 exposure (columns 3 and 4, Table 2). These Phase 2 to 5 results are similar if we instead define COVID-19 exposure as of the end of Phase 5, i.e. June 30, paralleling Figure 6 (Table A6).

get tested. As in the case of state-level confirmed COVID-19 cases, if people utilize district-level confirmed COVID-19 case statistics to inform their decisions, then our analysis demonstrates that voluntary responses to perceived COVID-19 intensity are not a significant contributor to the food supply shock. However, people may have also used other sources of information about the pandemic’s intensity, which were only imperfectly correlated with confirmed cases. In this event the lack of district-level correlation between confirmed cases and the food supply shock may in part be due to our imprecise measurement of perceived COVID-19 intensity at the district level.

Table 2: District-Level Supply Disruptions by COVID-19 Exposure

	arcsinh(Food Arrivals in Tonnes to District)			
	(1)	(2)	(3)	(4)
Phase 1 (Mar 25-Apr 14)	-1.96*** (0.10)			
Phases 2-5 (Apr 15-Jun 30)	0.15** (0.06)			
arcsinh(COVID-19 Cases in State) × Phase 1		-0.40*** (0.05)		
arcsinh(COVID-19 Cases in State) × Phases 2-5		0.05** (0.03)		
arcsinh(COVID-19 Cases in District) × Phase 1			-0.00 (0.06)	0.02 (0.05)
arcsinh(COVID-19 Cases in District) × Phases 2-5			0.04 (0.04)	0.04 (0.05)
Observations	94164	94164	94164	93928
Number of Districts	399	399	399	398
District-Calendar Date Fixed Effects	Yes	Yes	Yes	Yes
District-Year Fixed Effects	Yes	Yes	Yes	Yes
Date Fixed Effects	No	Yes	Yes	No
State-Date Fixed Effects	No	No	No	Yes

Notes: The unit of observation is a district-day. The regressions include data from March 1 to June 30 for 2019-2020, with the exception of national holidays (Republic Day and Holi). Standard errors are clustered at the district-level. The outcome is the inverse hyperbolic sine (arcsinh) of the number of tonnes of food arrivals to mandis in the districts that reported at least once in March 2020. COVID-19 Cases in State/District are as of April 14, 2020. *** p<0.01, ** p<0.05, * p<0.1.

To provide more direct evidence that state-level policy is a primary driver of the food supply shock, we turn to Google mobility data. In the absence of a comprehensive list of state-level policy responses to

the pandemic, declines in mobility may be a good proxy for policy responses. Namely, states with more stringent lockdowns should see a larger decline in mobility. In Figure A9 we replicate the analysis of Figure 5, but rather than confirmed COVID-19 cases, the x-axis measures the decline in state-level mobility during Phase 1 of the lockdown. Indeed, there is a strong positive correlation ($\rho = 0.54$, $p = 0.03$) between declines in state-level mobility and the food supply shock. Table A4 confirms this conclusion in a regression framework. Every 1% decrease in mobility at the state-level corresponds to a 2.6% decrease in food volumes ($p < 0.01$), though this relationship disappears once controlling for COVID-19 intensity. Echoing Figure 6, the unconditional relationship also disappears in Phases 2 - 5 ($\rho = 0.15$, $p = 0.56$, Figure A10).

4 Conclusion

This paper documents how India’s food supply chain responded following the national lockdown. Aggregate volumes dropped by 69% during the first few weeks of the lockdown, but subsequently fully recovered. Similarly, wholesale prices rose by 8% initially, but then returned to a downward trend. Exploiting regional variation, we also show that the initial volume shock was closely correlated with local exposure to COVID-19, and we demonstrate that this was more likely driven by state-level policy variation than by voluntary responses of those within the food supply chain. These facts provide some comfort with regard to the concerns of food security in large emerging economies like India’s in the wake of the pandemic.

Policymakers around the world, and especially in the developing world, face an important tradeoff in reacting to a pandemic. The more stringent their initial lockdown the less the pandemic can spread, but also the worse is the potential damage to the economy’s most critical functions. That India’s food supply chain began recovering immediately following the strictest phase of the lockdown was not a forgone conclusion. Shutting the country down for three weeks – and then beginning a staggered reopening – could have introduced a coordination breakdown along the many components of the supply chain, hampering its recovery even far after the lockdown was lifted. Though it is only a single case study, the fact that India’s food supply chain recovered so quickly and completely suggests that strict lockdown measures at the onset of pandemics need not cause long-term economic damage.

References

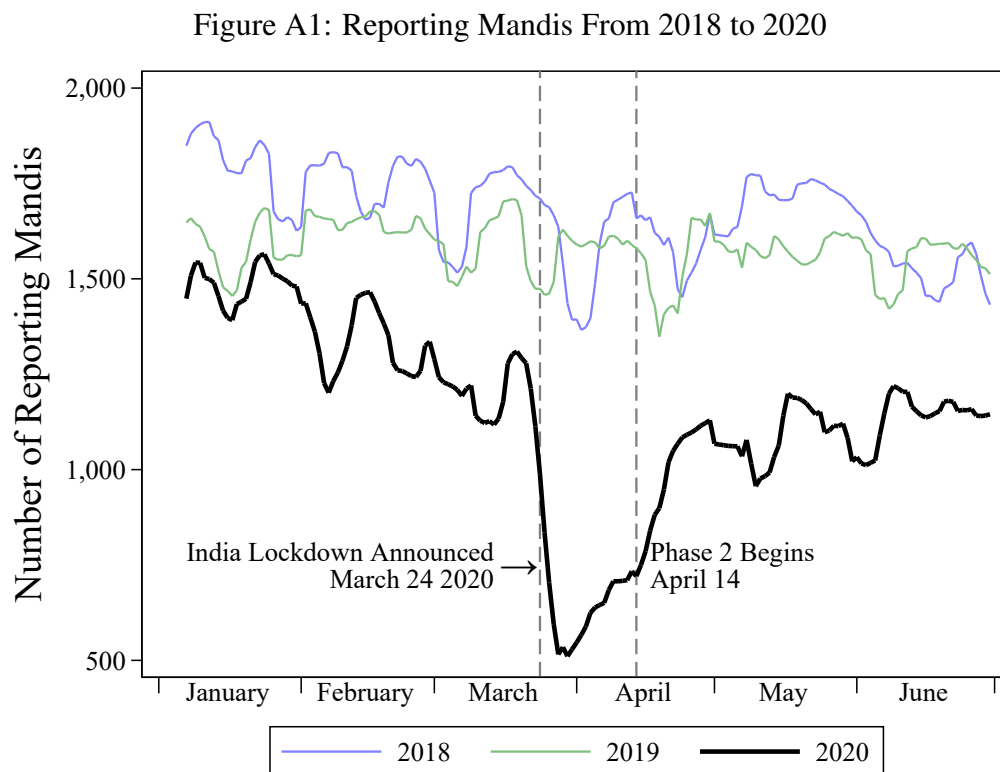
- Abay, Kibrom A., Guush Berhane, John Hoddinott, and Kibrom Tafere**, “COVID-19 and Food Security in Ethiopia: Do Social Protection Programs Protect?,” Policy Research Working Paper 9475, World Bank, Washington, DC 2020.
- Abay, Kibrom A., Leah EM Bevis, and Christopher B. Barrett**, “Measurement Error Mechanisms Matter: Agricultural Intensification with Farmer Misperceptions and Misreporting,” *American Journal of Agricultural Economics*, 2021, 103 (2), 498–522.
- Adjognon, Guigonan Serge, Jeffrey R. Bloem, and Aly Sanoh**, “The Coronavirus Pandemic and Food Security: Evidence From West Africa,” Policy Research Working Paper 9474, World Bank, Washington, DC 2020.
- Aggarwal, Shilpa, Jeong Dahyeon, Naresh Kumar, David S. Park, Jonathan Robinson, and Alan Spearot**, “Did COVID-19 Market Disruptions Disrupt Food Security? Evidence From Households in Rural Liberia and Malawi,” Working Paper 27932, National Bureau of Economic Research 2020.
- Ajzenman, Nicolas, Tiago Cavalcanti, and Daniel Da Mata**, “More Than Words: Leaders’ Speech and Risky Behavior During a Pandemic,” Discussion Paper 14229, IZA Institute of Labor Economics 2021.
- Anand, Abhishek, Justin Sandefur, and Arvind Subramanian**, “Three New Estimates of India’s All-Cause Excess Mortality during the COVID-19 Pandemic,” Working Paper 589, Center for Global Development, Washington, DC 2021.
- Banerjee, Abhijit, Macella Alsan, Emily Breza, Arun G. Chandrasekhar, Abhijit Chowdhury, Esther Duflo, Paul Goldsmith-Pinkham, and Benjamin A. Olken**, “Messages on COVID-19 Prevention in India Increased Symptoms Reporting and Adherence to Preventative Behaviors Among 25 Million Recipients with similar Effects on Non-Recipient Members of Their Communities,” Working Paper 27496, National Bureau of Economic Research 2020.
- , **Micahel Faye, Alan Krueger, Paul Niehaus, and Tavneet Suri**, “Effects of a Universal Basic Income During the Pandemic,” Working Paper 2020.
- Bellemare, Marc F and Casey J Wichman**, “Elasticities and the inverse hyperbolic sine transformation,” *Oxford Bulletin of Economics and Statistics*, 2020, 82 (1), 50–61.

- Ceballos, Francisco, Samyuktha Kannan, and Berber Kramer**, “Impacts of a national lockdown on smallholder farmers’ income and food security: Empirical evidence from two states in India,” *World Development*, 2020, 136.
- Coibion, Olivier, Yuriy Gorodnichenko, and Michael Weber**, “The Cost of the Covid-19 Crisis: Lockdowns, Macroeconomic Expectations, and Consumer Spending,” Working Paper 27141, National Bureau of Economic Research 2020.
- Government of India**, “Agricultural Statistics at a Glance 2019,” 2019.
- Hirvonen, Kalle, Alan de Brauw, and Gashaw T. Abate**, “Food Consumption and Food Security During the COVID-19 Pandemic in Addis Ababa,” *American Journal of Agricultural Economics*, 2021, 103 (3), 772–789.
- Hussain, Siraj**, “COVID-19 Border Lockdown: How Precariously Placed are Our Food Supply Chains?,” *The Wire*, 2020.
- Jain, Radhika and Pascaline Dupas**, “The Effects of India’s COVID-19 Lockdown on Critical Non-COVID Health Care and Outcomes,” Working Paper 2020.09.19.20196915, medRxiv 2020.
- Kansiime, Monica K., Justice A. Tambo, Idah Mugambi, Mary Bundi, Augustine Kara, and Charles Owuor**, “COVID-19 Implications on Household Income and Food Insecurity in Kenya and Uganda: Findings From a Rapid Assessment,” *World Development*, 2021, 137.
- Karaban, Elena and Sudip Mozumder**, “\$1 Billion from World Bank to Protect India’s Poorest from COVID-19 (Coronavirus),” *The World Bank*, 2020.
- Kesar, Surbhi, Rosa Abraham, Rahul Lahoti, Paaritosh Nath, and Amit Basole**, “Pandemic, Informality, and Vulnerability: Impact of COVID-19 on Livelihoods in India,” *Canadian Journal of Development Studies/Revue canadienne d’études du développement*, 2021, 42 (1-2), 145–164.
- Londoño-Vélez, Juliana and Pablo Querubin**, “The Impact of Emergency Cash Assistance in a Pandemic: Experimental Evidence from Colombia,” *The Review of Economics and Statistics*, 2020, pp. 1–27.
- Mahajan, Kanika and Shekhar Tomar**, “COVID-19 and Supply Chain Disruption: Evidence from Food Markets in India,” *American Journal of Agricultural Economics*, 2021, 103 (1), 35–52.

- Mahmud, Mahreen and Emma Riley**, “Household Response to an Extreme Shock: Evidence on the Immediate Impact of the COVID-19 Lockdown on Economic Outcomes and Well-Being in Rural Uganda,” *World Development*, 2021, 140.
- Mathew, Liz**, “67 lakh migrants return to 116 dists in 6 states,” *The Indian Express*, 2020.
- Mishra, Ashish and Soumya Pillai**, “Coronavirus update: Stock shortage and travel curbs hit traders of vegetables, grains in Delhi,” *Hindustan Times*, 2020.
- Narayan, Sudha and Shree Saha**, “One Step Behind: The Government of India and Agricultural Policy During the Covid-19 Lockdown,” *Review of Agrarian Studies*, 2020, 10 (2369-2020-1864).
- Narayanan, Sudha and Shree Saha**, “Urban food markets and the COVID-19 lockdown in India,” *Global Food Security*, 2021, 29, 100515.
- Ravindran, Saravana and Manisha Shah**, “Unintended Consequences of Lockdowns: COVID-19 and the Shadow Pandemic,” Working Paper 27562, National Bureau of Economic Research 2020.
- Rawal, Vikas and Ankur Verma**, “Agricultural Supply Chains During the COVID-19 Lockdown: A Study of Market Arrivals of Seven Key Food Commodities in India,” Monograph 20/1, Society for Social and Economic Research, New Delhi, India 2020.
- Ray, Debraj and Sreenivasan Subramanian**, “India’s Lockdown: An Interim Report,” *Indian Economic Review*, 2020, 55 (1), 31–79.
- Reardon, Thomas, Ashok Mishra, Chandra SR Nuthalapati, Marc F Bellemare, and David Zilberman**, “Covid-19’s Disruption of India’s Transformed Food Supply Chains,” *Economic and Political Weekly*, 2020, 55 (18), 18–22.
- Srivastava, Amit**, “Coronavirus in Navi Mumbai: 3 out of 5 wholesale markets in Vashi APMC to remain closed starting Monday,” *The Free Press Journal*, 2020.
- The Economic Times**, “COVID-19: Odd-even rules for sale of vegetables at Azadpur mandi from Monday,” 2020.
- The New Indian Express**, “COVID-19: Tamil Nadu government to impose fresh lockdown restrictions from Sunday. What does it mean for you?,” 2020.

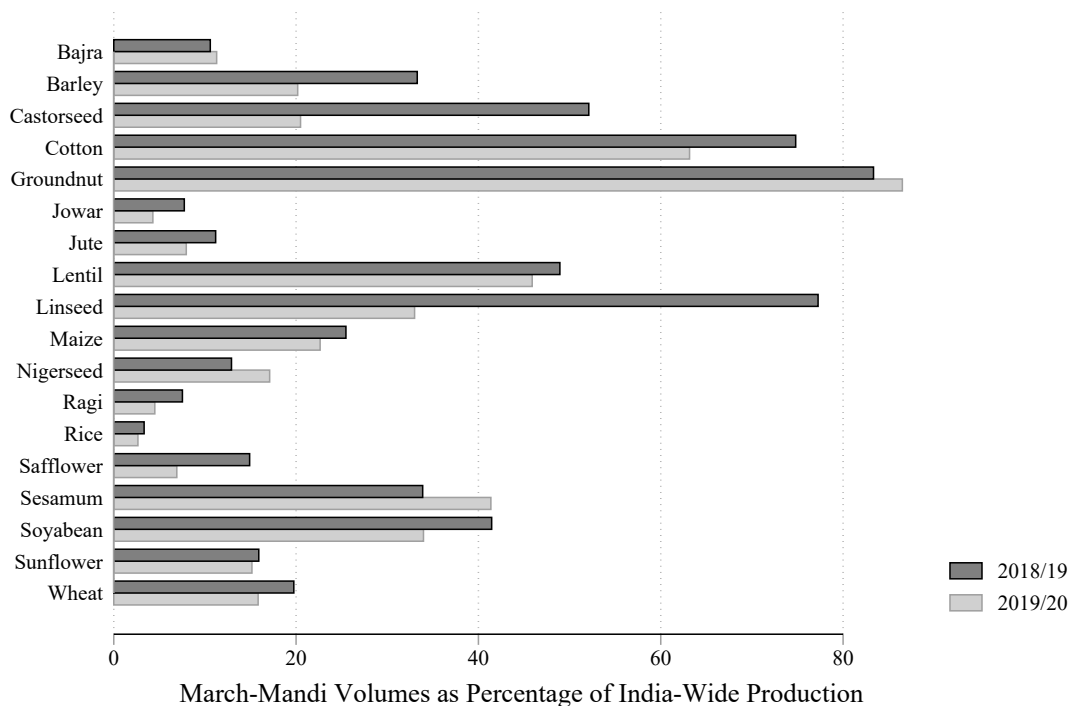
Varshney, Deepak, Devesh Roy, and J. V. Meenakshi, “Impact of COVID-19 on Agricultural Markets: Assessing the Roles of Commodity Characteristics, Disease Caseload and Market Reforms,” *Indian Economic Review*, 2020, 55, 83–103.

A Appendix [For Online Publication]



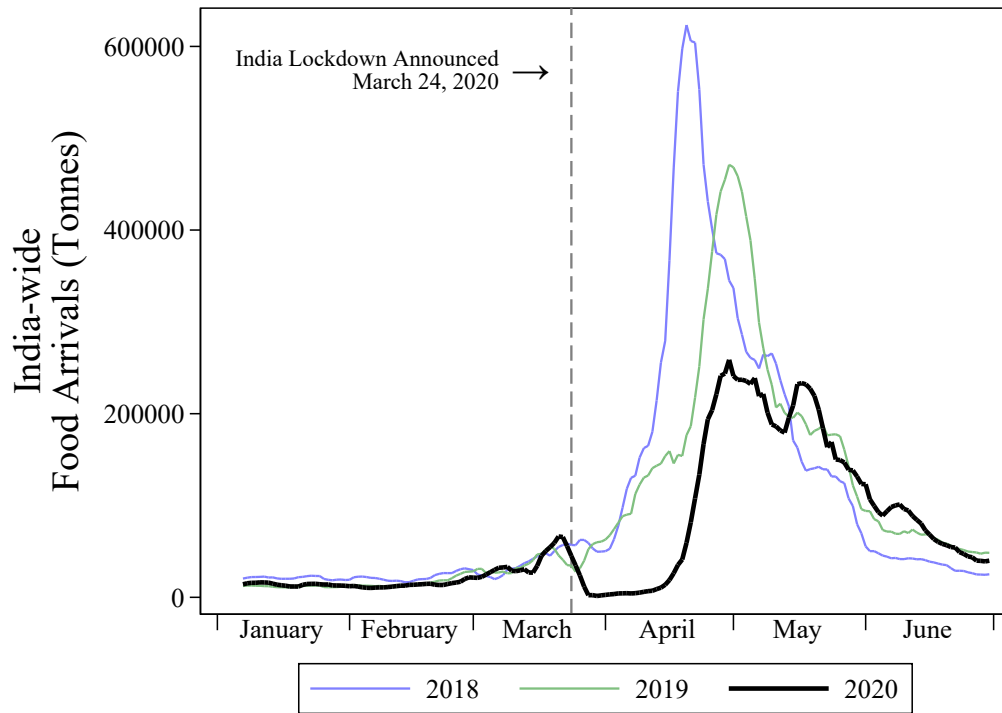
Notes: The y-axis variable is a seven-day moving average of the number of mandis that reported any data to Agmarknet on each date. The data covers January 1 to June 30, 2018 to 2020. Given that the variable is a seven-day moving average, the first data point shown is January 7 (the average number of reporting mandis for January 1 to 7). Source: agmarknet.gov.in.

Figure A2: Mandi Volumes as Percentage of India-Wide Production



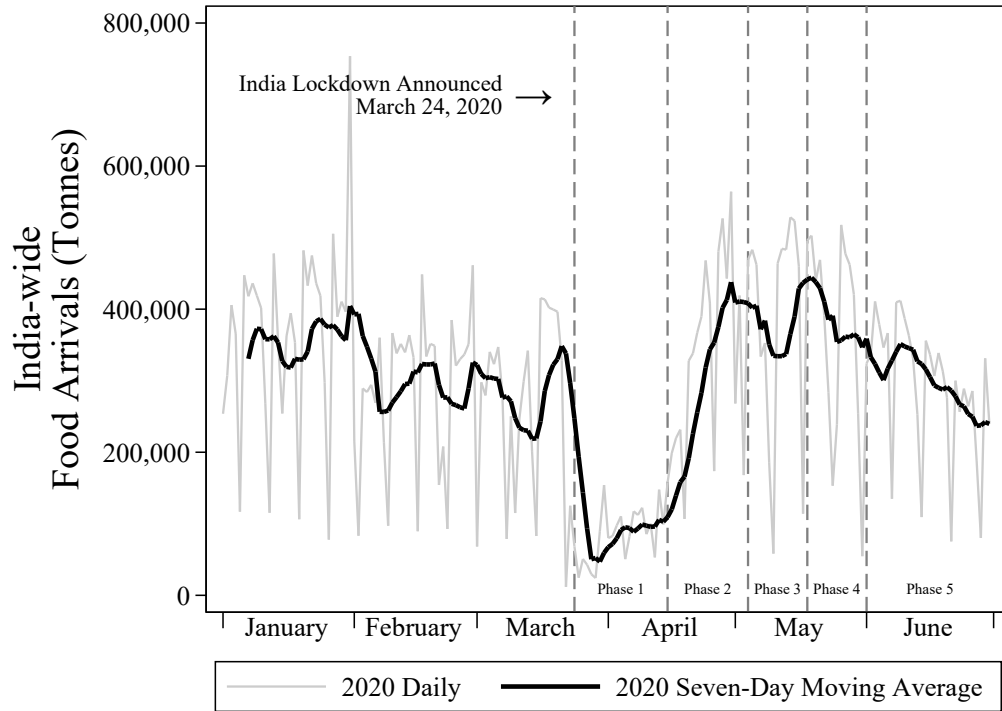
Notes: The x-axis variable is the aggregate tonnes of food arrivals to the 1,804 mandis that reported arrivals in tonnes to Agmarknet at least once in March 2020, as a percentage of total food production in India. This percentage is shown separately for two agricultural seasons (July 2018 to June 2019 and July 2019 to June 2020) and for the 18 food varieties coded similarly (and thus mergeable) in the two datasets (all either cereals, oilseeds, or commercial crops). The mean percentage coverage across the 18 varieties is 32% for 2018/19 and 25% for 2019/20. Each percentage is a lower bound of food sold in India given that not all production is sold. Sources: agmarknet.gov.in; Directorate of Economics and Statistics, Department of Agriculture, Cooperation and Farmers Welfare, https://eands.dacnet.nic.in/APY_96_To_06.htm.

Figure A3: The Lockdown and Wheat Arrivals



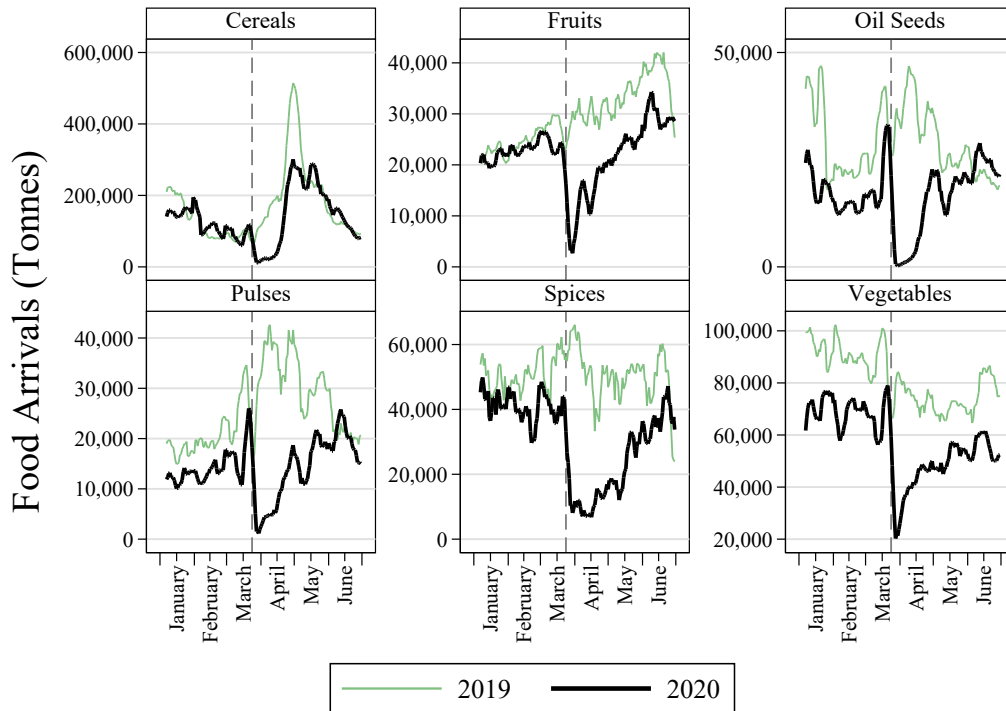
Notes: The y-axis variable is a seven-day moving average of aggregate tonnes of wheat arrivals to the 1,804 mandis that reported arrivals in tonnes to Agmarknet at least once in March 2020. The data covers January 1 to June 30, 2018 to 2020. Given that the variable is a seven-day moving average, the first data point shown is January 7 (the average arrivals for January 1 to 7). Source: agmarknet.gov.in.

Figure A4: Daily Trend in Arrivals, 2020



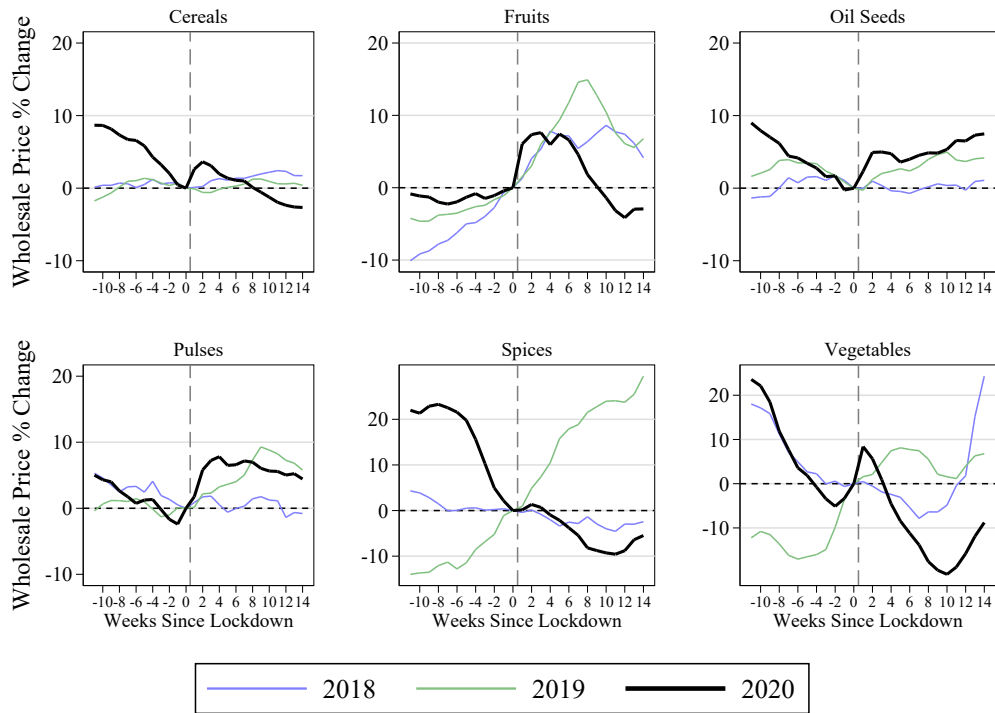
Notes: The figure plots the raw daily trend and seven-day moving average of aggregate tonnes of food arrivals to the 1,804 mandis that reported arrivals in tonnes to Agmarknet at least once in March 2020. The data covers January 1 to June 30, 2018 to 2020. Source: agmarknet.gov.in.

Figure A5: The Lockdown's Impact by Food Group



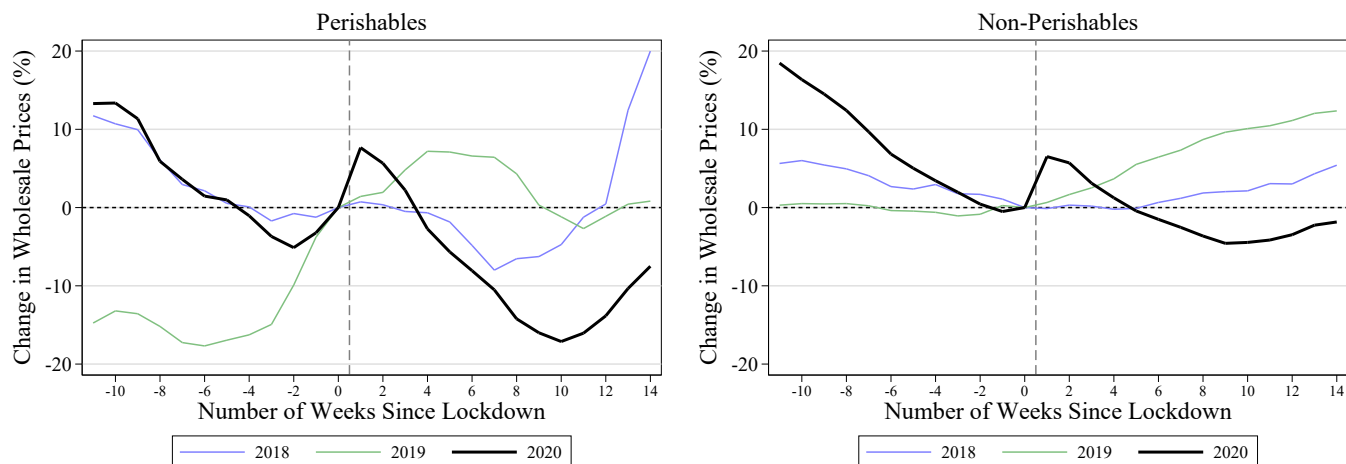
Notes: The y-axis variable is a seven-day moving average of aggregate tonnes of food arrivals, separately for each of six major product groups, to the 1,804 mandis that reported data to Agmarknet at least once in March 2020. The data covers January 1 to June 30, 2018 to 2020. Given that the variable is a seven-day moving average, the first data point shown is January 7 (the average arrivals for January 1 to 7). Each of the six product groups contains multiple food varieties: Cereals (20), Fruits (32), Oil Seeds (19), Pulses (28), Spices (19), and Vegetables (81). The top-10 varieties by tonnage per group are: (1) Cereals: wheat, paddy (dhan) (common), maize, rice, paddy (dhan) (basmati), barley, bajra, sorghum, ragi kodo millet, and foxtail millet; (2) Fruits: tender coconut, banana, mango, watermelon, apple, papaya, pomegranate, sweet lime, grapes, and orange; (3) Oil Seeds: mustard, soya bean, groundnut, castor seed, copra, sesamum, linseed, coconut seed, cotton seed, and sunflower; (4) Pulses: bengal gram, arhar, lentil, kabuli chana, black gram, green gram, peas (dry), arhar dal, kulthi, and green peas; (5) Spices: coconut, garlic, dry chillies, coriander seed, cumin seed, turmeric, soanf, methi seeds, ginger (dry), and aijwan; (6) Vegetables: potato, onion, tomato, cauliflower, green chilli, cabbage, brinjal, ginger (green), carrot, and banana-green. The vertical dashed line denotes March 24, 2020, the date of the announcement of India's national lockdown. Source: agmarknet.gov.in.

Figure A6: Wholesale Prices Evolved Similarly for Most Commodity Groups



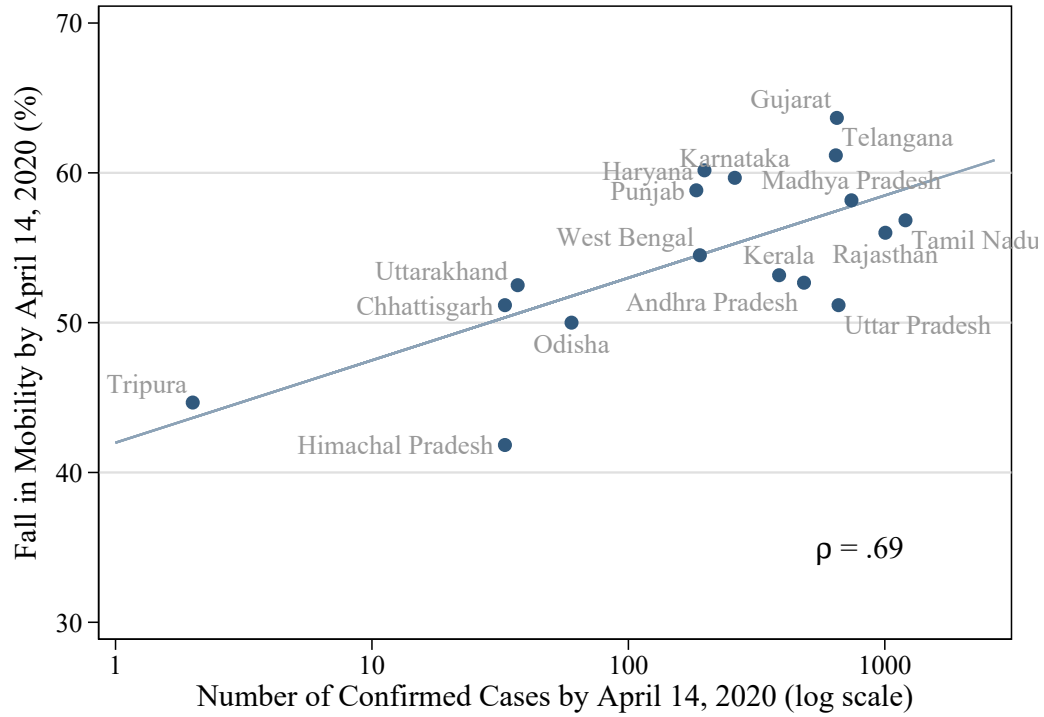
Notes: The figure plots the percentage change in wholesale prices implied by the year-by-year estimates from equation 2, separately for six major commodity groups. Specifically, the pre-lockdown y-axis variable is $100 \times (e^{\hat{\beta}_t^{\text{pre}}} - 1)$ for $t \in \{-11, -10, \dots, -2, -1\}$, while the post-lockdown variable is $100 \times (e^{\hat{\beta}_t^{\text{post}}} - 1)$ for $t \in \{1, 2, \dots, 13, 14\}$. The sample comprises only those mandis that reported data at least once in March 2020. Source: agmarknet.gov.in.

Figure A7: Wholesale Prices Increased in the Short Term for Both Perishables and Non-Perishables



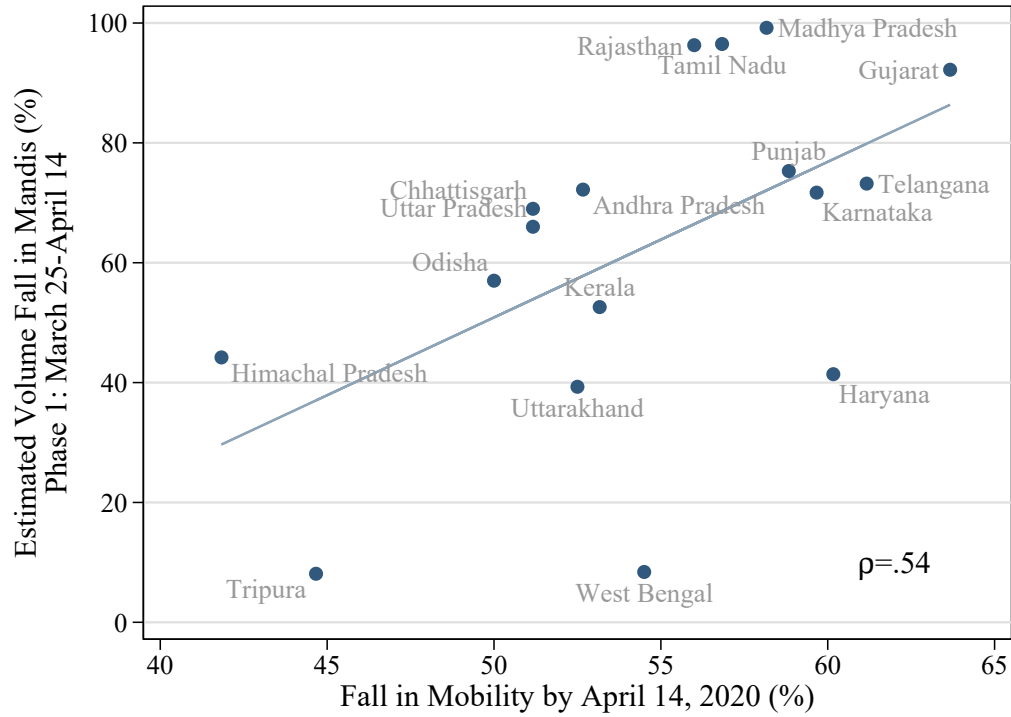
Notes: The figure plots the percentage change in wholesale prices implied by the year-by-year estimates from equation 2, separately for perishable (left) and non-perishable items (right). Specifically, the pre-lockdown y-axis variable is $100 \times (e^{\beta_i^{\text{pre}}} - 1)$ for $t \in \{-11, -10, \dots, -2, -1\}$, while the post-lockdown variable is $100 \times (e^{\beta_i^{\text{post}}} - 1)$ for $t \in \{1, 2, \dots, 13, 14\}$. The sample comprises only those mandis that reported data at least once in March 2020. We manually coded items as either perishable or non-perishable. Of the 15 broad product categories, 2 are coded as perishable (flowers and fruits), 11 are coded as non-perishable (beverages, cereals, drug and narcotics, dry fruits, fibre crops, forest products, oil seeds, oils and fats, other, pulses, and spices), and 2 are mixed (live stock, poultry, fisheries, and vegetables). In the live stock, poultry, and fisheries category, all items are coded as non-perishable except egg and fish. In the vegetables category, all items are coded as perishable except elephant yam, onion, potato, sweet potato, tapioca, and yam. Source: agmarknet.gov.in.

Figure A8: States With More Coronavirus Cases Had Larger Falls in Mobility During Phase 1



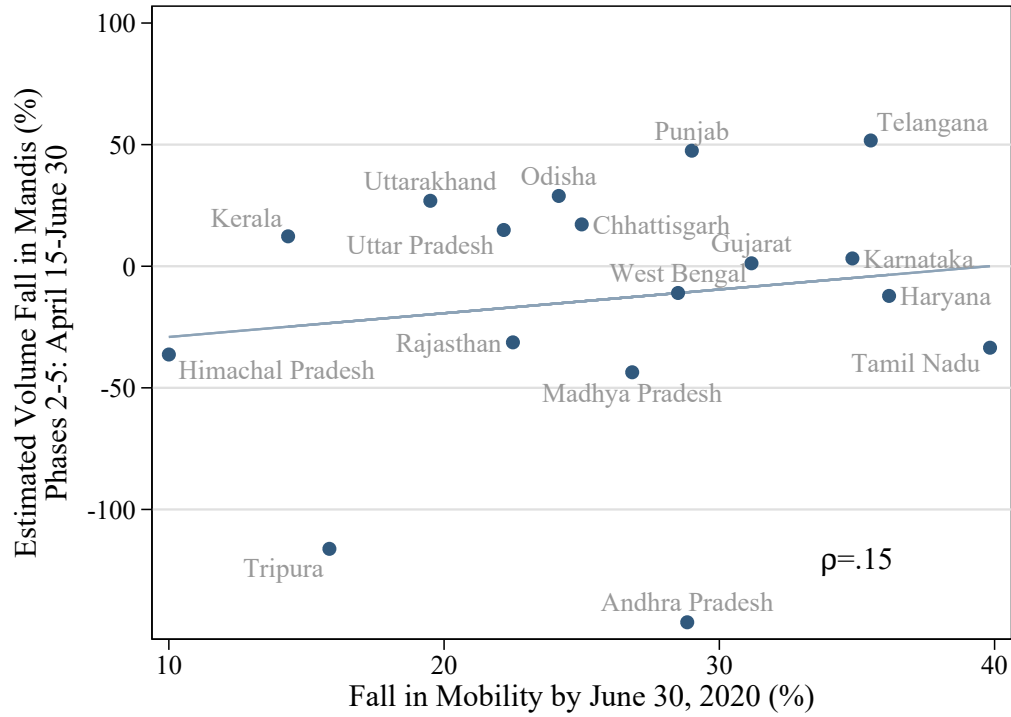
Notes: The y-axis is the estimated Phase 1 volume fall for each of 17 states, where the estimate is $100 \times (1 - e^{\hat{r}})$ using estimated coefficients from equation 3. The x-axis is the percentage fall in mobility from pre-pandemic to April 14, 2020, from [google.com/covid19/mobility](https://www.google.com/covid19/mobility), averaged across six categories: retail and recreation, grocery and pharmacy, parks, transit stations, workplaces, and residential (reverse-coded). ρ is Pearson's correlation coefficient between the y- and x-axis variables.

Figure A9: States With Larger Falls in Mobility Had Bigger Supply Chain Disruptions During Phase 1



Notes: The y-axis is the estimated Phase 1 volume fall for each of 17 states, where the estimate is $100 \times (1 - e^{\hat{r}})$ using estimated coefficients from equation 3. The x-axis is the percentage fall in mobility from pre-pandemic to April 14, 2020, from [google.com/covid19/mobility](https://www.google.com/covid19/mobility), averaged across six categories: retail and recreation, grocery and pharmacy, parks, transit stations, workplaces, and residential (reverse-coded). ρ is Pearson's correlation coefficient between the y- and x-axis variables.

Figure A10: Mobility Shocks Insignificantly Related To Supply Chain Disruptions Following Phase 1



Notes: The y-axis is the estimated Phase 2-5 volume fall for each of 17 states, where the estimate is $100 \times (1 - e^{\hat{\theta}^s})$ using estimated coefficients from equation 3. The x-axis is the percentage fall in mobility from pre-pandemic to June 30, 2020, from [google.com/covid19/mobility](https://www.google.com/covid19/mobility), averaged across six categories: retail and recreation, grocery and pharmacy, parks, transit stations, workplaces, and residential (reverse-coded). ρ is Pearson's correlation coefficient between the y- and x-axis variables.

Table A1: Coverage of States

State	All Mandis	March Mandis
Andaman And Nicobar	3	0
Andhra Pradesh	138	14
Arunachal Pradesh	1	0
Assam	22	0
Bihar	2	0
Chandigarh	1	0
Chattisgarh	150	136
Goa	7	7
Gujarat	215	148
Haryana	113	57
Himachal Pradesh	35	22
Jammu And Kashmir	19	8
Jharkhand	23	1
Karnataka	158	145
Kerala	105	95
Madhya Pradesh	286	276
Maharashtra	327	0
Manipur	5	0
Meghalaya	16	5
Mizoram	3	0
Nagaland	19	17
Nct Of Delhi	8	3
Odisha	104	71
Pondicherry	3	3
Punjab	231	110
Rajasthan	163	144
Tamil Nadu	201	121
Telangana	162	63
Tripura	32	27
Uttar Pradesh	256	243
Uttrakhand	21	18
West Bengal	76	70
TOTAL	2905	1804

Notes: The Table shows the number of mandis per state in the full sample versus in our analysis sample. The full sample (“All Mandis”) includes any mandi that reported any arrivals (in tonnes) during January to June, 2018 to 2020. Our analysis sample (“March Mandis”) includes only the subset of mandis that reported arrivals (in tonnes) at least once during March 2020.

Table A2: Representativeness at the District-Level

	All Districts	Mandi Districts	March-Mandi Districts
Population	1891961	2051330	2086947
Fraction of Rural Households	.73	.73	.73
% Aged 0 to 6	14	14	13
Male Population/Female Population	1.1	1.1	1.1
% Scheduled Caste	15	16	17
% Scheduled Tribe	18	15	13
% Literate	62	63	63
% of Male Population Working	53	54	54
% of Female Population Working	28	28	28

Notes: Each cell gives the district-level mean for a variable from the 2011 Indian Census. The second column reports the India-wide mean (640 districts). The third column reports the mean for districts in which at least one mandi reported arrivals in tonnes during January to June, 2018 to 2020 (508 districts). The fourth column is the same, but only for the subset of districts with mandis that reported during March 2020 (391 districts), as per our analysis sample.

Table A3: The Lockdown's Impact on Food Arrivals: Rural vs. Urban

	ln(Food Arrivals)			
	Rural (1)	Rural (2)	Urban (3)	Urban (4)
Phase 1 (Mar 25-Apr 14)	-1.38*** (0.27)	-1.38*** (0.22)	-1.05*** (0.33)	-1.05*** (0.27)
Phase 2 (Apr 15-May 3)	-0.15 (0.25)	-0.09 (0.22)	-0.26 (0.29)	-0.27 (0.26)
Phase 3 (May 4-May 17)	0.17 (0.30)	0.16 (0.26)	0.17 (0.34)	0.17 (0.31)
Phase 4 (May 18-May 31)	0.27 (0.29)	0.27 (0.25)	0.35 (0.37)	0.33 (0.31)
Phase 5 (Jun 1-Jun 30)	0.26 (0.21)	0.30 (0.19)	0.54* (0.31)	0.50* (0.26)
Observations	240	360	240	360
Sample Period	2019-20	2018-20	2019-20	2018-20
Average Rural HH Fraction	.86	.86	.59	.59
Phase 1: p(Rural=Urban)	.44	.34		
Year Fixed Effects	Yes	Yes	Yes	Yes
Date Fixed Effects	Yes	Yes	Yes	Yes

Notes: The unit of observation is a day. The regressions include data from March 1 to June 30 for each year (either 2019-2020 or 2018-2020), with the exception of national holidays (Republic Day and Holi). Robust standard errors used throughout. The outcome for columns 1 and 2 is the natural logarithm of the tonnes of food arrivals to mandis in rural districts that reported at least once in March 2020. The outcome for columns 3 and 4 is the same, but for mandis in urban districts. Rural districts are those with an above-median fraction of rural households as per the 2011 Census. Urban districts are all remaining districts. Average Rural HH Fraction is the average (across districts) fraction of rural households among the districts included in the sample for that column. P-values to test the equality of the Phase 1 effect in rural vs. urban districts come from a pooled specification in which all right-hand-side variables are interacted with an indicator variable for rural district. *** p<0.01, ** p<0.05, * p<0.1.

Table A4: Predicting State-Level Supply Disruptions

	Estimated Volume Fall in Mandis (%) Phase 1: March 25-April 14		
	(1)	(2)	(3)
ln(Number of Confirmed Cases by April 14, 2020)	12.00*** (1.66)		11.12*** (2.66)
Fall in Mobility by April 14, 2020 (%)		2.60*** (0.85)	0.37 (0.77)
Observations	17		

Notes: The unit of observation is a state. Robust standard errors. Constant included but not shown. The outcome is the estimated Phase 1 volume fall for each of 17 states, using the estimates from equation 3. Number of Confirmed Cases by April 14, 2020 is the number of confirmed cases of coronavirus by the end of Phase 1, from api.covid19india.org. Fall in Mobility is the percentage fall in mobility from pre-pandemic to April 14, 2020, from google.com/covid19/mobility, averaged across six categories: retail and recreation, grocery and pharmacy, parks, transit stations, workplaces, and residential (reverse-coded). *** p<0.01, ** p<0.05, * p<0.1.

Table A5: Pre-Trends Check for District-Level Analysis

	arcsinh(Arrivals to District)		
	(1)	(2)	(3)
arcsinh(COVID-19 Cases in State) × March 1-24 2020	-0.03 (0.02)		
arcsinh(COVID-19 Cases in District) × March 1-24 2020		-0.01 (0.03)	-0.03 (0.03)
Observations	38304	38304	38208
Number of Districts	399	399	398
District-Calendar Date Fixed Effects	Yes	Yes	Yes
District-Year Fixed Effects	Yes	Yes	Yes
Date Fixed Effects	Yes	Yes	No
State-Date Fixed Effects	No	No	Yes

Notes: The unit of observation is a district-day. The regressions include data from February 1 to March 24 for 2019-2020, with the exception of national holidays (Republic Day and Holi). Standard errors are clustered at the district-level. The outcome is the inverse hyperbolic sine (arcsinh) of the number of tonnes of food arrivals to mandis in the districts that reported at least once in March 2020. COVID-19 Cases in State/District are as of April 14, 2020. *** p<0.01, ** p<0.05, * p<0.1.

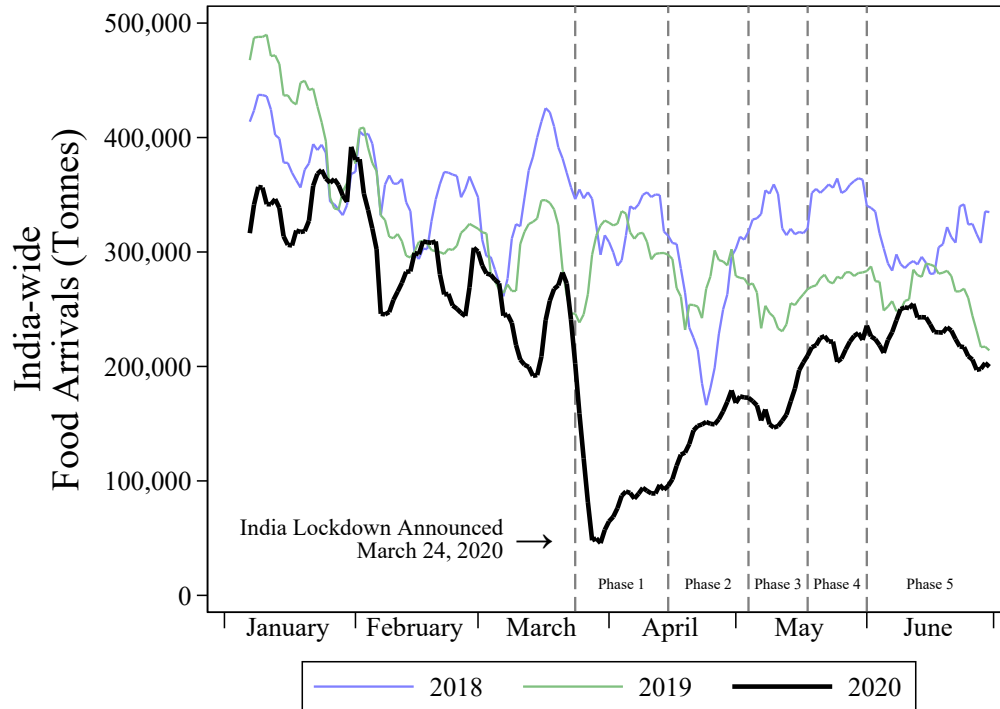
Table A6: District-Level Supply Disruptions by COVID-19 Exposure as of June 30, 2020

	arcsinh(Food Arrivals in Tonnes to District)			
	(1)	(2)	(3)	(4)
Phase 1 (Mar 25-Apr 14)	-1.96*** (0.10)			
Phases 2-5 (Apr 15-Jun 30)	0.15** (0.06)			
arcsinh(COVID-19 Cases in State) × Phase 1		-0.34*** (0.07)		
arcsinh(COVID-19 Cases in State) × Phases 2-5		0.02 (0.04)		
arcsinh(COVID-19 Cases in District) × Phase 1			0.17** (0.07)	0.02 (0.05)
arcsinh(COVID-19 Cases in District) × Phases 2-5			0.01 (0.04)	0.02 (0.05)
Observations	94164	94164	94164	93928
Number of Districts	399	399	399	398
District-Calendar Date Fixed Effects	Yes	Yes	Yes	Yes
District-Year Fixed Effects	Yes	Yes	Yes	Yes
Date Fixed Effects	No	Yes	Yes	No
State-Date Fixed Effects	No	No	No	Yes

Notes: The unit of observation is a district-day. The regressions include data from March 1 to June 30 for 2019-2020, with the exception of national holidays (Republic Day and Holi). Standard errors are clustered at the district-level. The outcome is the inverse hyperbolic sine (arcsinh) of the number of tonnes of food arrivals to mandis in the districts that reported at least once in March 2020. COVID-19 Cases in State/District are as of June 30, 2020. *** p<0.01, ** p<0.05, * p<0.1.

B Arrivals Analysis Excluding Wheat

Figure B1: The Lockdown Caused Wholesale Volumes to Plummet



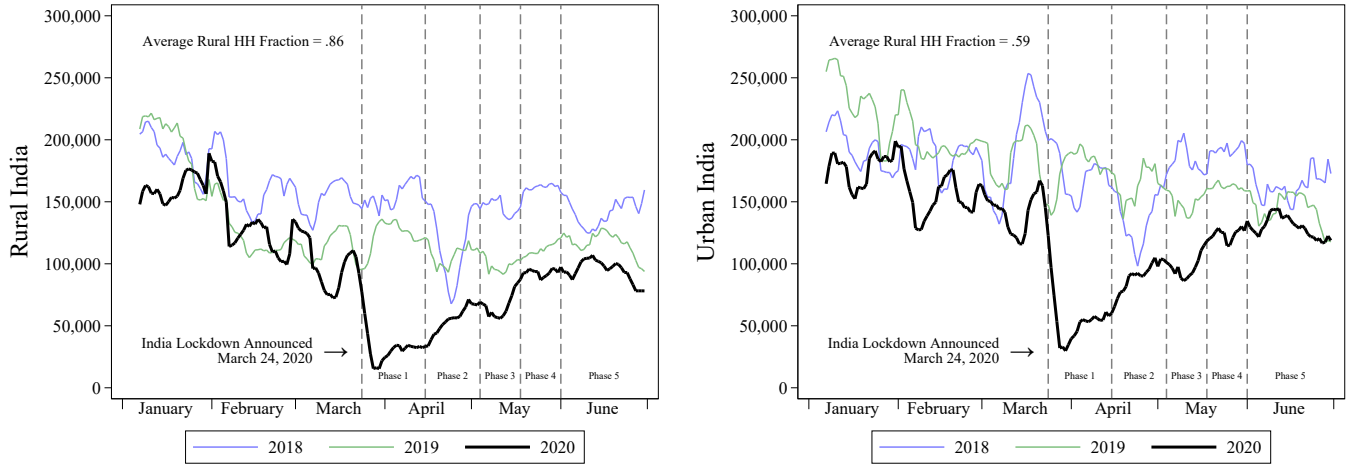
Notes: This figure parallels Figure 1, but excludes wheat arrivals. The y-axis variable is a seven-day moving average of aggregate tonnes of food arrivals, excluding wheat, to the 1,804 mandis that reported arrivals in tonnes to Agmarknet at least once in March 2020. The data covers January 1 to June 30, 2018 to 2020. Given that the variable is a seven-day moving average, the first data point shown is January 7 (the average arrivals for January 1 to 7). Source: agmarknet.gov.in.

Table B1: The Lockdown's Impact on Food Arrivals

	ln(Food Arrivals)		ln(Functioning Mandis)		ln(Food Arrivals)	
	(1)	(2)	(3)	(4)	(5)	(6)
Phase 1 (Mar 25-Apr 14)	-0.96*** (0.28)	-0.92*** (0.23)	-0.54*** (0.15)	-0.50*** (0.12)	-0.48*** (0.04)	-0.44*** (0.04)
Phase 2 (Apr 15-May 3)	-0.14 (0.26)	-0.01 (0.23)	-0.10 (0.14)	-0.04 (0.14)	-0.12*** (0.03)	-0.06* (0.03)
Phase 3 (May 4-May 17)	0.07 (0.31)	-0.02 (0.26)	-0.12 (0.19)	-0.14 (0.17)	0.13*** (0.04)	0.12*** (0.03)
Phase 4 (May 18-May 31)	0.20 (0.32)	0.12 (0.26)	-0.10 (0.19)	-0.11 (0.17)	0.24*** (0.04)	0.24*** (0.03)
Phase 5 (Jun 1-Jun 30)	0.37 (0.25)	0.33 (0.21)	0.07 (0.14)	0.08 (0.12)	0.24*** (0.04)	0.31*** (0.03)
Observations	240	360	240	360	252626	377749
Sample Period	2019-20	2018-20	2019-20	2018-20	2019-20	2018-20
Year Fixed Effects	Yes	Yes	Yes	Yes	Yes	Yes
Date Fixed Effects	Yes	Yes	Yes	Yes	Yes	Yes
Mandi Fixed Effects	No	No	No	No	Yes	Yes

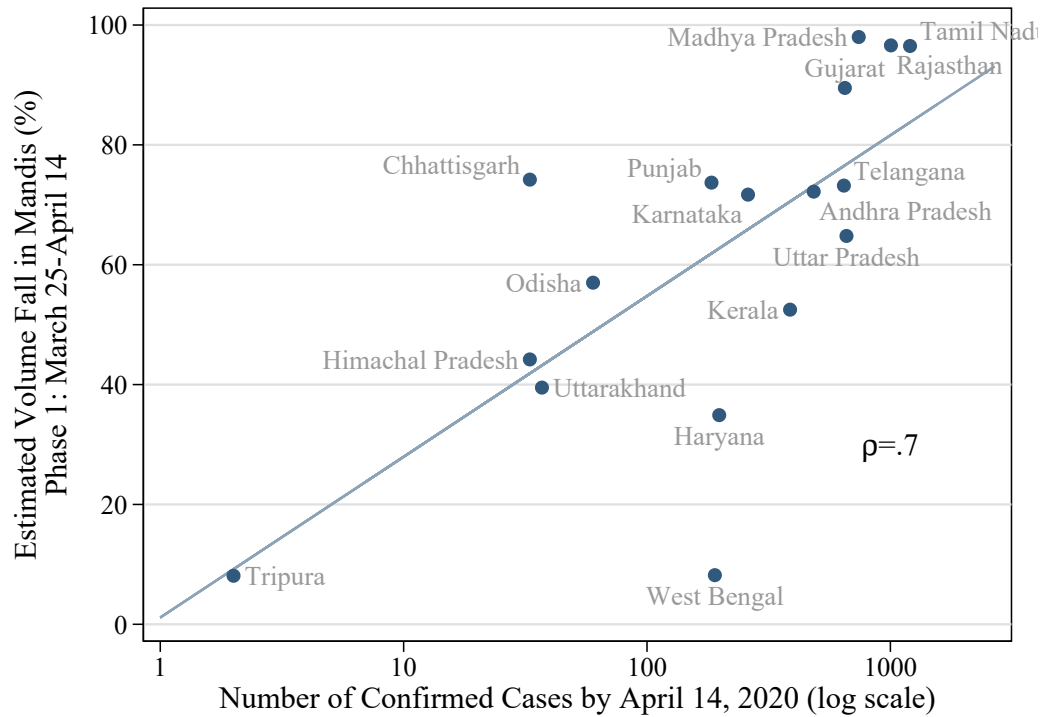
Notes: The unit of observation is a day in columns 1 to 4, and a mandi-day in columns 5 and 6. The regressions include data from March 1 to June 30 for each year (either 2019-2020 or 2018-2020), with the exception of national holidays (Republic Day and Holi). Robust standard errors in columns 1 to 4, standard errors clustered at mandi-level in columns 5 and 6. The outcome for columns 1 and 2 is the natural logarithm of the tonnes of non-wheat nationwide food arrivals to mandis that reported at least once in March 2020. The outcome for columns 3 and 4 is the natural logarithm of the number of functional (i.e. reporting) mandis among the sample relevant for columns 1 and 2. The outcome for columns 5 and 6 is same as that for columns 1 and 2, though measured at the mandi-day-level. *** p<0.01, ** p<0.05, * p<0.1.

Figure B2: Food Arrivals to Urban vs. Rural India



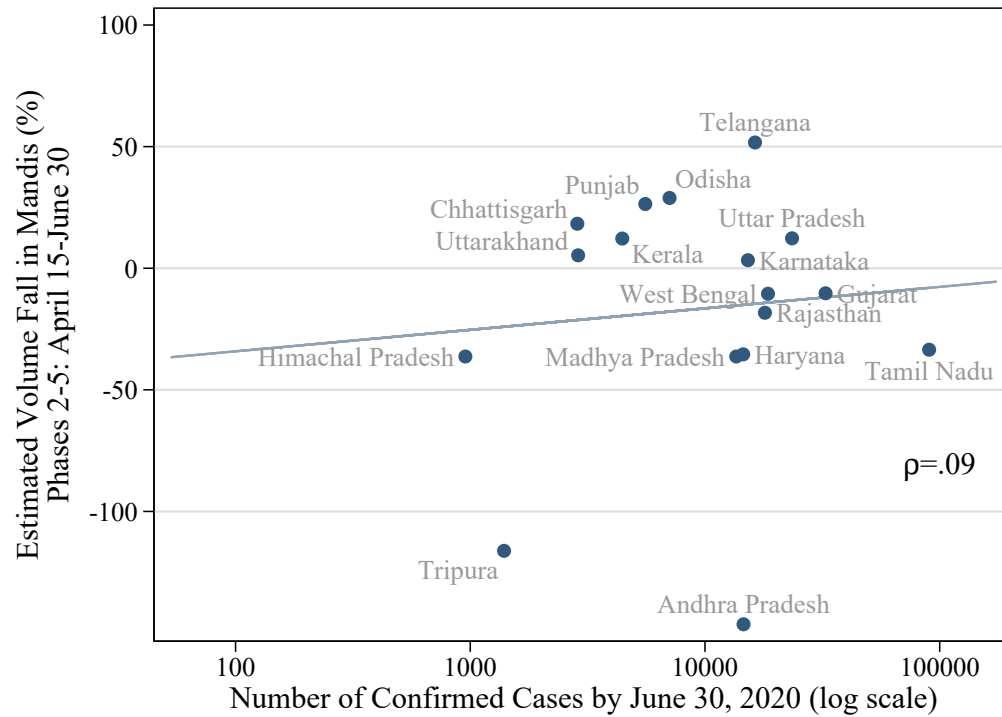
Notes: This figure parallels Figure 3, but excludes wheat arrivals. The y-axis variable is a seven-day moving average of aggregate tonnes of food arrivals, excluding wheat, to the 1,804 mandis that reported arrivals in tonnes to Agmarknet at least once in March 2020. Rural India includes any mandis residing in a district with an above-median share of rural households in the 2011 Census, with Urban India including all other mandis. The data covers January 1 to June 30, 2018 to 2020. Given that the variable is a seven-day moving average, the first data point shown is January 7 (the average arrivals for January 1 to 7). Source: agmarknet.gov.in.

Figure B3: States With More Coronavirus Cases Had Bigger Supply Chain Disruptions During Phase 1



Notes: This figure parallels Figure 5, but excludes wheat arrivals. The y-axis is the estimated Phase 1 volume fall for each of 17 states, where the estimate is $100 \times (1 - e^{-\lambda})$ using estimated coefficients from equation 3. The x-axis is the number of confirmed cases of coronavirus by the end of Phase 1 (April 14), from api.covid19india.org. ρ is Pearson's correlation coefficient between the estimated Phase 1 volume fall and the natural logarithm of the number of confirmed cases by April 14, 2020.

Figure B4: Volume Shocks Were Not Correlated With Coronavirus Cases After Phase 1



Notes: This figure parallels Figure 6, but excludes wheat arrivals. The y-axis is the estimated Phase 2-5 volume fall for each of 17 states, where the estimate is $100 \times (1 - e^{\hat{\theta}^s})$ using estimated coefficients from equation 3. The x-axis is the number of confirmed cases of coronavirus by the end of Phase 5 (June 30), from api.covid19india.org. ρ is Pearson's correlation coefficient between the estimated Phase 2-5 volume fall and the natural logarithm of the number of confirmed cases by June 30, 2020.

Table B2: District-Level Supply Disruptions by COVID-19 Exposure

	arcsinh(Food Arrivals in Tonnes to District)			
	(1)	(2)	(3)	(4)
Phase 1 (Mar 25-Apr 14)	-1.82*** (0.09)			
Phases 2-5 (Apr 15-Jun 30)	0.13** (0.06)			
arcsinh(COVID-19 Cases in State) × Phase 1		-0.34*** (0.04)		
arcsinh(COVID-19 Cases in State) × Phases 2-5		0.05** (0.03)		
arcsinh(COVID-19 Cases in District) × Phase 1			-0.01 (0.06)	0.02 (0.05)
arcsinh(COVID-19 Cases in District) × Phases 2-5			-0.00 (0.04)	-0.02 (0.05)
Observations	94164	94164	94164	93928
Number of Districts	399	399	399	398
District-Calendar Date Fixed Effects	Yes	Yes	Yes	Yes
District-Year Fixed Effects	Yes	Yes	Yes	Yes
Date Fixed Effects	No	Yes	Yes	No
State-Date Fixed Effects	No	No	No	Yes

Notes: The unit of observation is a district-day. The regressions include data from March 1 to June 30 for 2019-2020, with the exception of national holidays (Republic Day and Holi). Standard errors are clustered at the district-level. The outcome is the inverse hyperbolic sine (arcsinh) of the number of tonnes of non-wheat food arrivals to mandis in the districts that reported at least once in March 2020. COVID-19 Cases in State/District are as of April 14, 2020. *** p<0.01, ** p<0.05, * p<0.1.