

Physician Beliefs and Patient Preferences: A New Look at Regional Variation in Health Care Spending

David Cutler
Ariel Dora Stern

Jonathan Skinner
David Wennberg

Working Paper 15-090



Physician Beliefs and Patient Preferences: A New Look at Regional Variation in Health Care Spending

David Cutler
Harvard University

Jonathan Skinner
Dartmouth College

Ariel Dora Stern
Harvard Business School

David Wennberg
Quartet Health

Working Paper 15-090

Copyright © 2015, 2017 by David Cutler, Jonathan Skinner, Ariel Dora Stern, and David Wennberg

Working papers are in draft form. This working paper is distributed for purposes of comment and discussion only. It may not be reproduced without permission of the copyright holder. Copies of working papers are available from the author.

PHYSICIAN BELIEFS AND PATIENT PREFERENCES: A NEW LOOK AT REGIONAL VARIATION IN HEALTH CARE SPENDING

David Cutler
Harvard University
National Bureau of Economic Research

Dartmouth College
Dartmouth Institute for Health Policy & Clinical Practice
National Bureau of Economic Research

Ariel Dora Stern
Harvard Business School
Ariadne Labs at Brigham and Women's Hospital and the Harvard T. H. Chan
School of Public Health

David Wennberg
Quartet Health, New York, NY

Abstract

There is considerable controversy about the causes of regional variations in health care expenditures. Using vignettes from patient and physician surveys linked to fee-for-service Medicare expenditures, this study asks whether patient demand-side factors or physician supply-side factors explain these variations. The results indicate that patient demand is relatively unimportant in explaining variations. Physician organizational factors matter, but the most important factor is physician beliefs about treatment. In Medicare, we estimate that 35 percent of spending for end-of-life care, and 12 percent of spending for heart attack patients (and for all enrollees) is associated with physician beliefs unsupported by clinical evidence.

Corresponding Author: Ariel Dora Stern, Harvard Business School, Morgan Hall 433, Boston, MA 02163, Phone: (617) 495-2332, email astern@hbs.edu

Comments by Amitabh Chandra, Elliott Fisher, Mike Geruso, Tom McGuire, Joshua Gottlieb, Nancy Morden, Matt Shapiro, Allison Rosen, Gregg Roth, Pascal St.-Amour, Victor Fuchs, 2 anonymous reviewers, and seminar participants were exceedingly helpful. We are grateful to F. Jack Fowler and Patricia Gallagher of the University of Massachusetts Boston for developing the patient and physician questionnaires. Funding from the National Institute on Aging (T32-AG000186-23 and P01-AG031098 to the National Bureau of Economic Research and P01-AG019783 and U01-AG046830 to Dartmouth) and LEAP at Harvard University (Skinner) is gratefully acknowledged. De-identified survey data are available at <http://tdicauses.dartmouth.edu>.

I. Introduction

Regional variations in rates of medical treatments are large in the United States and other countries (Skinner, 2012). In the U.S. fee-for-service Medicare population, price-adjusted, per-enrollee 2014 spending varies nearly two-fold across areas. Similar price-adjusted variations are found in the under-65 population (Cooper et al., 2015), and do not appear to be explained by patient illness or poverty (Institute of Medicine, 2013).

What drives such variation in treatment and spending? One possibility is patient demand. Most studies of variations have been conducted in settings where all patients have similar and generous insurance policies, so price differences and income effects are likely to be small. Still, heterogeneity in patient preferences for care may play a role. In very acute situations, some patients may prefer to try all possible measures to (potentially) prolong life, while others may prefer palliation and an out-of-hospital death. If people who value and demand life-prolonging treatments tend to live in the same areas, patient preference heterogeneity could lead to regional variation in equilibrium outcomes (Anthony, et al., 2009; Baker, et al., 2014; Mandelblatt, et al., 2012).

Another possible source of variation arises from the supply side. In “supplier-induced demand,” a health care provider shifts a patient’s demand curve beyond the level of care that the fully-informed patient would otherwise want. This would be true in a principal-agent framework (McGuire and Pauly, 1991) if prices are high enough or income is scarce. While physician utilization has been shown to be sensitive to prices (Jacobson, et al., 2006; Clemens and Gottlieb, 2014), it would be difficult to explain the magnitude of U.S. Medicare spending variations using prices alone, since federal reimbursement rates do not vary greatly across areas.

Variations in supply could also occur if physicians respond to organizational pressure or peer pressure to treat patients more intensively, or maintain differing beliefs about appropriate treatments – particularly for conditions where there are few professional guidelines (Wennberg, et al., 1982). If this variation is spatially correlated – for example, if physicians with more intensive treatment preferences hire other physicians with similar practice styles – the resulting regional differences in beliefs could explain regional variations in equilibrium spending.

It has proven difficult to separately estimate the impact of physician beliefs, patient preferences, and other factors as they affect equilibrium healthcare outcomes, largely because of challenges in identifying factors that affect only supply or demand (Dranove and Wehner, 1994). Finkelstein, et al. (2016) address these challenges by following Medicare enrollees who moved to either higher or lower spending regions, finding that roughly half of the difference in spending across areas can be attributed to supply, and approximately half to demand. Their study, however, cannot identify the specific components of demand-side factors (e.g., preferences) nor supply-side factors (income and substitution effects, or physician beliefs).

In this study, we use “strategic” survey questions of physicians and patients (in the sense of Ameriks et al., 2011) to avoid several concerns related to risk-adjustment and endogeneity in estimating a unified model of regional Medicare expenditures. Strategic surveys have been used to estimate underlying preference parameters such as risk aversion (Barsky et al., 1997), the demand for precautionary saving (Ameriks et al., 2011), and long-term care insurance (Ameriks et al., 2016). Vignettes have been shown to predict actual physician behavior in clinical settings (e.g. Peabody, et al., 2000 and 2004; Dresselhaus, et al., 2004; Mandelblatt, et al., 2012; Evans, et al., 2015). In prior work, our physician surveys have been used by Sirovich, et al. (2008) and Lucas et al.

(2010) to find that Medicare spending predicted physician treatment intensity, but these studies did not adjust for patient demand, nor could they answer the question of whether (and which) supply side factors explain observed variation in Medicare expenditures.¹

In our study, physician incentives and beliefs are captured using detailed, scenario-based surveys that present physician-respondents with questions about their financial and practice organization, and with vignette-based questions about how the physician would manage elderly individuals with specific chronic health conditions and a given medical and treatment history.² Patient preferences are measured by a different survey of Medicare enrollees age 65 and older asking about preferences among a variety of aggressive and/or palliative care interventions. Previous studies using this survey (Anthony, et al., 2009; Barnato, et al., 2007; Baker, et al., 2014) found a small but discernible influence of patient preferences on regional variations in health care spending.³

We develop an equilibrium model that specifies health care intensity (as measured by expenditures) as a function of a variety of factors specific to health care providers' and patients' preferences. To estimate this requires a multivariate model in which supply and demand factors are on the right-hand side of the equation, and overall intensity (or expenditures) are on the left-hand

¹ In these studies, because spending was on the right-hand side of the equation, and physician survey responses on the left, they could not estimate whether survey responses explain regional variations in spending, nor could the different factors (e.g., financial incentives, vignette responses) be considered in a multivariate framework.

² However, our surveys do not capture “deep” preference parameters as in (e.g.) Barsky et al. (1997).

³ The Baker et al. (2014) study used the same patient-level survey data to create regional measures of patient preferences, and attempted to explain differences in spending using these measures. They included potentially endogenous hospital bed and physician supply to adjust for the supply-side, rather than the physician survey data we use.

side. We use Hospital Referral Region⁴ (HRR)-level measures that account for both physician and patient responses within each HRR, and estimate models at the HRR level for 74 of the largest areas (covering roughly half of the Medicare population). We also test our model at the individual level for Medicare fee-for-service patients with acute myocardial infarction (AMI) admitted to hospital during 2007-2010. This latter sample allows us to control more accurately for individual health status and poverty, and to examine the association between physician characteristics and quality of care.

In our empirical exercises, we characterize physicians along two non-exclusive dimensions: those who consistently and unambiguously recommended intensive care beyond what would be indicated by current clinical guidelines (whom we refer to as “cowboys”), and those who consistently recommended palliative care for the very severely ill (whom we refer to as “comforters”). At the HRR level, we explain roughly 60% of the variation in end-of-life spending by knowing only these two composite measures of physician treatment intensity combined with the frequency with which physicians recommend that their patients return for routine office visits. Our results are consistent with those in Finkelstein, et al. (2016) whose estimated supply-side variations are similar to (or a bit larger than) those reported below. Conditional on the supply side, we find that in this setting, demand-side Medicare patient preferences explain much less of total spending, consistent with other previous studies (Anthony, et al., 2009; Barnato, et al., 2007; Baker, et al., 2014; Bederman et al., 2011, and Gogineni, et al., 2015).

Prior studies have not been able to explain why some physicians practice very aggressively (cowboys) while others are more likely to treat end-of-life

⁴ The Dartmouth Atlas has defined 306 hospital referral regions based on patient migration data from the Medicare claims data in 1992/93. Each region required a tertiary hospital providing cardiovascular surgical procedures and for neurosurgery. (Dartmouth Atlas of Health Care, 2013)

patients with palliative care (comforters). We use the full sample of surveyed physicians to examine factors associated with the likelihood of being a cowboy or a comforter (few physicians were both). We find that only a small fraction of physicians report making recent decisions purely due to financial considerations. We also find that “pressure to accommodate” either patients (by providing treatments that are not needed) or referring physicians’ expectations (doing procedures to keep them happy) have a modest but significant relationship with physician beliefs about appropriate care. While many physicians report making clinical interventions as a result of malpractice concerns, these responses do not explain variation in treatment recommendations.

Ultimately, the largest degree of residual variation appears to be explained by differences in physician beliefs about the efficacy of particular therapies. Physicians in our data have starkly different views about how to treat the same patients. These views are not strongly correlated with demographics, financial incentives, background, or practice characteristics, and are often inconsistent with evidence-based professional guidelines for appropriate care. Extrapolating from the sample of HRRs, we calculate that as much as 35 percent of end-of-life fee-for-service Medicare expenditures, 12 percent of Medicare expenditures for heart attack patients, and 12 percent of overall Medicare expenditures are explained by supply-side (physician) beliefs that cannot be justified either by patient preferences or by evidence of clinical effectiveness.

This paper proceeds as follows: the next section provides a graphical interpretation of the theory (with derivations in Appendix A); Section III provides data and estimation strategies, while Section IV presents the results, with particular attention paid to methodological challenges to the vignette approach raised by Sheiner (2014). Section V concludes.

II. A Model of Variation in Medical Intensity

We develop a simple model of patient demand and physician supply, presented in detail in Appendix A.⁵ On the demand side, the patient’s indirect utility function is a function of out-of-pocket prices, income, health, and preferences for care. Solving this for optimal intensity of care yields patient demand x^D . As in McGuire (2011), we assume that x^D is the fully informed patient’s demand for the quantity of care or procedures prior to any demand “inducement.”

On the supply side, we assume that physicians seek to maximize the perceived health of their i^{th} patient, $s_i(x)$, by appropriate choice of inputs x , subject to patient demand (x_i^D), financial considerations, and organizational factors. Note that the function $s(x)$ captures both patient survival and patient quality of life, for example as measured by quality-adjusted life years (QALYs).

Individual physicians are assumed to be price-takers, but face a wide range of reimbursement rates from private insurance providers, Medicare, and Medicaid.⁶ We summarize the model graphically in Figure 1, with further details in Appendix A. The downward sloping curve, $s'(x)$, represents the true value of the treatment x where patients are lined up in decreasing order of appropriateness for treatment. This is not a demand curve *per se*, but instead reflects diminishing returns to treatment by moving further into the population of patients less likely to benefit. The “supply” curve, λ , reflects rising costs to physicians, converting dollars to QALYs by taking the inverse of the social cost-effectiveness ratio (e.g., \$100,000 per life-year). The optimum is therefore the intersection of the supply and demand curves, at Point A.

⁵ Also see Chandra and Skinner (2012); Finkelstein et al. (2016) as well draw on this model.

⁶ The model is therefore simpler than models in which hospital groups and physicians jointly determine quantity, quality, and prices, (Pauly, 1980) or in which physicians exercise market power over patients to provide them with “too much” health care (McGuire, 2011).

Why might the equilibrium quantity of care provided differ from A? In traditional supplier-induced demand models, reimbursement rates for procedures, taste for income, and organizational or peer effects would cause the supply curve to shift to (say) λ^* , leading to (in this case) higher utilization. Traditional supplier-induced demand effects occur via movement *along* the marginal benefit curve, $s'(x)$. Alternatively, patient demand could affect the quantity consumed. But so long as patients perceive their true medical benefit curve, $s'(x)$, demand factors such as preference, income, and prices will shift the λ curve, so that λ^* , for example, corresponds to a patient with a higher income or a more modest copay, for example.

Less conventionally, the marginal value curve may differ across physicians and their patients, for example as shown in Figure 1 by $g'(x)$, which could represent a more skilled physician. Thus, Point C in Figure 1 corresponds to greater intensity of care than Point A and arises naturally when the physician is more productive. For example, heart attack patients experience better outcomes from cardiac interventions in regions with higher rates of revascularization, consistent with a Roy model of occupational sorting (Chandra and Staiger, 2007; 2017). Conditional on characteristics, patients treated in regions where the true productivity curve is $g'(x)$ will experience better health outcomes.

Alternatively, physicians may be overly optimistic with respect to their ability to perform procedures, leading to expected benefits that exceed realized benefits (Comin et al., 2017). Baumann, et al. (1991) have documented the phenomenon of “macro uncertainty, micro certainty” in which physicians and nurses exhibit overconfidence in the value of their treatment for a specific patient (micro certainty) even in the absence of a general consensus as to which procedure is more clinically effective (macro uncertainty). Ransohoff, et al. (2002) has noted a further psychological bias towards more aggressive treatment

decisions: If the patient gets better, the physician gets the credit, but if the patient gets worse, the physician is able to say that she did everything possible.

To see this in Figure 1, suppose the actual benefit is realized along the curve $s'(x)$ but the physician's *perceived benefit* is along the curve $g'(x)$. The equilibrium achieved will then be at Point D: in this scenario, the marginal treatment harms the patient, even though the physician expects the opposite, incorrectly believing they are targeting Point C. In equilibrium, this type of supplier behavior would appear consistent with classic supplier-induced demand, but the cause is quite different. Most importantly, here the physician would not need to consciously “over-treat” (and thus harm) the patient, as in standard supplier-induced demand models.

How can we distinguish among these scenarios? Using the estimation equation derived in Appendix A, we use information about patient income and preferences for treatment to capture demand effects. For supply effects, we document traditional supplier-induced demand measures through detailed questions to individual physicians regarding financial pressure, peer expectations, and willingness to cater to patient demand. To measure beliefs, we use vignettes describing well-defined clinical cases. We can further distinguish between a Roy model of treatment (as in Chandra and Staiger, 2007) and one of overconfidence by testing whether patients experience higher quality care in regions with a greater share of cowboys and/or more frequent follow-up visits.

III. Data and Estimation Strategy

In this section, we discuss the practicalities of estimating supply and demand using detailed survey data. Even detailed clinical data reveal only a subset of what a physician knows about her patients' health and reveal virtually nothing about non-clinical drivers of patients' demand for health care services. We use the results of a vignette-based physician survey to proxy for physician

beliefs about appropriate care (supply), and a complementary vignette-based patient survey to capture patient’s preferences for care (demand). Ameriks, et al. (2011) and Ameriks et al. (2016) use “strategic surveys” to address similar challenges in identifying supply and demand factors, although the approach is relatively novel in health care economics.

We assume that the physician’s responses to the vignettes are “all in” measures, reflecting physician beliefs as well as the variety of financial, organizational, and capacity-related constraints physicians face. For example, if a physician responds to a vignette by proposing a specific treatment that in turn generates revenue for her practice, we assume that any potential financial benefit is already reflected in her response. An alternative assumption is that the physician’s response purely reflects clinical beliefs (for example, how one might answer for qualifying boards), and is not representative of the day-to-day realities of their practice. While we cannot fully address this limitation, we consider this alternative assumption about behavior⁷ by including organizational and financial variables in the estimation equations in addition to the vignette estimates. That the organizational and financial variables add so little explanatory power to the regression is consistent with our “all-in” assumption.

In an ideal world, patient survey responses would be matched with those of their physicians. Because our data do not directly link physician and patients responses (nor are we permitted to match physician responses to their claims data), we instead match supply and demand at the area level using HRRs.⁸

Physician Surveys

⁷ See Table 8 of Appendix C.

⁸ Spending measures are based on area of patient residence, not where treatment is actually received, to avoid biases arising from large “destination” medical centers in regions like Boston, MA or Rochester, MN. For the analysis of urgent AMI, patients are unlikely to seek care outside of the HRR since every minute counts for survival. For these we link physician and patient responses to the HRRs in which the *hospitals* are located.

Two subsamples were drawn from the American Medical Association Database: cardiologists and primary care physicians (PCPs).^{9,10} A total of 999 cardiologists were randomly selected to receive the survey. Of these, 614 cardiologists responded, for a response rate of 61.5 percent. Some physicians surveyed did not self-identify as cardiologists, and others were missing crucial information such as practice type, leaving us a final sample of 598 cardiologists with complete survey responses. The PCP responses come from a parallel survey of self-identified PCPs (family practice, internal medicine, or internal medicine/family practice). A total of 1,333 PCPs were randomly selected to receive the survey and 967 individuals had complete responses to the survey for a response rate of 72.5 percent.¹¹

Patient Survey

The patient survey sampling frame included all Medicare beneficiaries in the 20 percent denominator file who were age 65 or older on July 1, 2003 (Barnato et al., 2007). A random sample of 4,000 individuals was drawn; the response rate was 72.1 percent, leading to 2,882 total survey responses.

Utilization and Quality Data

⁹ The document outlining “Survey Methods and Findings” (from The Center for Survey Research, University of Massachusetts Boston [CSR/UMass] and Dartmouth Medical School) is available upon request; our discussion follows Sirovich et al. (2008). A mail survey of PCPs and cardiologists was conducted by CSR/UMass. To construct the survey, focus groups concentrated on the development and wording of realistic clinical vignettes, to ensure that the questions were well understood and the answers meaningful. Next, Masterfiles of the American Medical Association and American Osteopathic Association were used to obtain a random sample of domestic PCPs (self-identified as family practice, general practice, or internal medicine) or cardiologists practicing at least twenty hours per week. Residents and retired physicians were ineligible. After telephone verification of the physician’s offices, each physician was mailed a survey along with a twenty-dollar bill, with a telephone follow-up.

¹⁰ The PCP survey oversampled in four targeted cities: two areas of low intensity (Minneapolis, MN; Rochester, NY) and two areas of high intensity (Manhattan, NY; Miami, FL).

¹¹ Physician and patient survey responses could vary systematically by demographic covariates such as age, sex, and race or ethnicity, leading to greater sampling variability if we happen to sample a few physicians, for example, in one group. However, our main regression results (Table 3) were very similar with such adjustment (presented in Appendix Tables C3 and C4), so we did not pursue this approach.

We match the survey responses to Medicare expenditure data from the Dartmouth Atlas of Health Care (2013). The Atlas includes detailed data on how medical resources are distributed and used in the United States, using Medicare data to provide information and analysis about national, regional, and local markets, as well as hospitals and their affiliated physicians.

Our primary dependent variable is the natural logarithm of price, age, sex, and risk-adjusted HRR-level, per-patient Medicare expenditures in the last two years of life for enrollees over age 65 with a number of fatal illnesses.¹² These measures implicitly adjust for differences across regions in health status: an individual with renal failure who subsequently dies is likely to be in similar (poor) health regardless of whether she lives. End-of-life measures are commonly used to instrument for health care intensity (e.g., Fisher et al., 2003a and 2003b; Doyle, 2011; Romley et al., 2011). (In addition, we consider overall HRR-level Medicare spending, adjusted only for price, age, sex, and race differences.) Initially, we limit our attention to the 74 HRRs with a minimum of three patients, three cardiologists (average = 5.6), and at least one PCP (average = 7.7) surveyed, leading to an attenuated sample of physicians (N=985 in the restricted sample) and patients (N = 1,516 in the restricted sample with an average of 20.5 patient respondents per HRR).¹³

We also consider a third measure of utilization: one-year Medicare expenditures after admission for AMI during 2007-2010 in the fee-for-service population. The advantage of this patient-level data is that we are better able to address concerns that physician practice patterns are correlated with

¹² These include congestive heart failure, cancer/leukemia, chronic pulmonary disease, coronary artery disease, peripheral vascular disease, severe chronic liver disease, diabetes with end organ damage, chronic renal failure, and dementia, which account for 90 percent of end-of-life spending.

¹³ To address potential measurement error of the constructed variables on the right-hand side of this regression specification, we bootstrap the entire estimation process 1,000 times to calculate all standard errors in HRR-level regressions, beginning with the construction of the HRR-level physician and patient samples, and proceeding through the HRR-level regression analysis.

unobservable health status of patients (Sheiner, 2014). By limiting our attention to AMI patients – all of whom are seriously ill – and by using extensive risk-adjustment based on comorbidities during admission, quintiles of ZIP code income, and an HCC (hierarchical condition categories) score based on previous outpatient and inpatient diagnoses, we can better adjust for differences across regions in underlying health.

We also consider quality measures. In the aggregated analysis, we use multiple Medicare measures from the “Hospital Compare” database aggregated to the HRR level. In the AMI data, we use two quality measures: risk-adjusted one-year mortality and risk-adjusted percutaneous coronary interventions (PCI), or stents, on the day of admission. Clinical trials have shown that same-day PCI yield the greatest benefit for patients (Keeley et al., 2003; Boden et al., 2007).

Patient survey vignette detail

We use responses to five survey questions that ask patients about their likelihood of wanting unnecessary tests or cardiologist referrals in the case of new chest pain as well as preferences for comfort vs. intensive life-prolonging interventions in an end of life situation. The exact language used in these vignettes is reproduced in Appendix B. Since the questions patients respond to are hypothetical and typically describe scenarios that have not yet happened, we think of them as preferences not affected by physician advice (x^D).

Two of the questions on the patient survey relate to unnecessary care, asking respondents if they would like a test or cardiac referral even if their PCP did not think they needed one (Table 1).¹⁴ Overall, 73 percent of patients wanted such an unneeded test and 56 percent wanted an unneeded cardiac referral. However, there is wide variation across regions in average responses to these

¹⁴ This question captures pure patient demand independent of what the physician wants. Note, however, that patients could still answer they would not seek an additional referral if they were unwilling to disagree with their physician.

questions. Figure 2 shows density plots of patient preferences for the main questions in the patient survey for the 74 HRRs considered (weighted by the number of patients per HRR). Superimposed on the Figure is the simulated distribution based on 1,000 bootstrap samples, with replacement, under the null hypothesis that individuals were randomly assigned to areas. P-values for over-dispersion are reported in the last column of Table 1; these indicate that the observed variation is significantly greater than can be explained by random variation.

Three other patient questions, grouped into two binary indicators each, measure preferences for end-of-life care. One reflects patients' desire for aggressive care at the end of life: whether they would want to be put on a respirator if it would extend their life for either a week (one question) or a month (another question). The next question asks if, in situations in which the patient reached a point at which they were feeling bad all of the time, the patient would want drugs to feel better, even if those drugs might shorten their life. In each case, there is statistically significant variation across HRRs (Table 1).

Patients' preferences are sometimes correlated across questions. For example, the correlation coefficient between wanting an unneeded cardiac referral and wanting an unnecessary test is 0.43 ($p < .01$). But other comparisons point to modest, negative associations, for example a -0.28 correlation coefficient between wanting palliative care and wanting to be on a respirator at the end of life.

Potential biases in the patient survey.

One concern with these questions is that they are hypothetical, and might not reflect true patient demand. However, Anthony et al. (2009) have linked survey respondents to the individuals' Medicare claims, and found a strong link between preferences and care-seeking behavior (e.g., physician visits) at the individual level (also see Mandelblatt et al., 2012). Questions about end-of-life

care may appear abstract until the patient actually faces decisions related to end-of-life care, but our results are similar even with a subset of respondents age 80+ where end-of-life scenarios and treatment decisions are likely to be more salient. Moreover, Medicare enrollees are increasingly choosing to create advanced directives that specify their end-of-life choices well before they face those decisions.¹⁵

Another limitation of the study is the possibility that patient survey responses are measured with more error than physician responses, which may lead us to under-estimate the role of patient preferences in determining utilization. Patient-level sample sizes are larger than physician sample sizes, but physicians treat multiple patients (and even those small samples are a larger fraction of the physician population), and so may better capture underlying physician beliefs. While we cannot rule out this hypothesis, we do not find a strong correlation between utilization and patient preferences even in the subset of HRRs with at least 20 patient surveys.¹⁶

Finally, because higher proportions of patients shared aggressive preferences relative to the proportion of “cowboy” physicians, the patient survey data may constitute a less sensitive test for aggressive tastes. As a result of all of the above factors, patient preferences may be measured with more error than physician beliefs in these surveys.

Physician survey vignette detail

¹⁵ According to one study, more than half of elderly Americans have advanced care directives. The primary reason for not having one was being unaware of their existence (Rao, et al., 2014).

¹⁶ In addition, the IOM report (2013) and Newhouse and Garber (2013) have noted that even within HRRs, there is considerable variation in utilization at the much smaller hospital service area (HSA) level. Assuming that our sample of physicians and patients are drawn randomly within HRRs from different HSAs, this would imply that the average HRR-level samples of (e.g.) physician beliefs would be measured with greater error. This makes it even more surprising that responses from just a handful of physicians in an HRR could provide such a strong prediction for that region’s end-of-life spending.

Prior research has established that in practice, physicians “do what they say they’d do” in surveys. For example, physicians’ self-reported testing intensity has been shown to be predictive of population-based rates of coronary angiography (Wennberg et al., 1997). The detailed clinical vignette questions used in the physician surveys are shown in Appendix B and summary statistics are presented in Table 1.

We first consider the vignette for Patient A, which asks a physician how frequently they would schedule routine follow-up visits for a patient with stable angina whose symptoms and cardiac risk factors are well controlled on current medical therapy (for cardiologists) or a patient with hypertension (for PCPs). The response is unbounded, and expressed in months, but in practice individual physician responses ranged from 1 to 24 months. Figure 3a presents a HRR-level histogram of averages from the cardiology survey for 74 HRRs.

How do these responses correspond to guidelines for managing such patients? The 2005 American College of Cardiology/American Heart Association [ACC/AHA] guidelines (Hunt et al., 2005) – what most cardiologists would have considered “the cardiology Bible” at the time the survey was fielded – recommended follow-up every 4-12 months. However, even with these broad recommendations, we find that 21 percent of cardiologists are “high follow-up” in the sense of recommending visits more frequently than every 4 months, and 1.4 percent are “low follow-up” and recommend visits less frequently than every 12 months. These physicians were geographically clustered in a subset of HRRs ($p < .01$ in a test of the null of no correlation) and the distribution of high follow-up cardiologists across HRRs is shown in Figure 3b.

The equivalent measure for PCPs is recommended follow-up frequency for a patient with well-controlled hypertension. The Seventh Report of the Joint National Committee on Prevention, Detection, Evaluation, and Treatment of

High Blood Pressure (U.S. Department of Health and Human Services, 2004), which represented guideline-based recommendations at the time, suggests follow-up for this type of patient every 3-6 months. Based on this range, 4.4 percent of PCPs in our sample are “high follow-up” physicians and 8.8 percent are “low follow-up” physicians.¹⁷

The next two vignettes focus on patients with heart failure, a much costlier setting. Heart failure is also a natural scenario to consider because it is common, the disease is chronic, its prognosis is poor, and treatment is expensive. Vignettes for Patients B and C ask questions about the treatment of Class IV heart failure, the most severe classification and one in which patients experience symptoms at rest. In both patient scenarios, the vignette patient is on maximal (presumably optimal) medications, and neither patient described is a candidate for revascularization: Patient B has already had a coronary stent placed without symptom change, and Patient C is explicitly noted to not be a candidate for this procedure. The key differences between the two scenarios are the respective patients’ ages (75 for Patient B, 85 for Patient C), the presence of asymptomatic non-sustained ventricular tachycardia in Patient B, and severe symptoms that resolve partially with increased oxygen in Patient C.

Cardiologists in the survey were asked about various interventions as well as palliative care for each of these patients. For Patient B, they were given five choices: three intensive treatments (repeat angiography; implantable cardiac defibrillator [ICD] placement, and pacemaker insertion), one involving medication (antiarrhythmic therapy), and palliative care. For Patient C, each

¹⁷ Office visits are not a large component of physicians’ incomes (or overall Medicare expenditures). Thus, any correlation between the frequency of follow-up visits and overall expenditures would most likely be because frequent office visits are also associated with additional highly remunerated tests and interventions (such as echocardiography, stress imaging studies, and so forth) that further set in motion the “diagnostic-therapeutic cascade” (Lucas, et al., 2008).

physician is also presented with three intensive options (admit to the ICU/CCU, placement of a coronary artery catheter, and pacemaker insertion), two less aggressive options (admit to the hospital [but not the ICU/CCU] for diuresis, and send home on increased oxygen and diuretics), and palliative care. In each scenario, cardiologists separately reported their likelihood of recommending *each* potential intervention on a 5-interval range from “always / almost always” to “never.” Each response is recorded independently of other responses. For example, physicians could “frequently” recommend both palliative care and one (or more) additional intervention(s).

Beginning with the obvious, both patients described in the survey deserve a frank conversation about their prognosis and an ascertainment of their preferences for end-of-life care. The one-year mortality rate for each patient is expected to be as high as 50 percent (Ahmed et al., 2006). If compliant with guidelines, therefore, all physicians should have answered “always/almost always”, or at least “most of the time,” when reporting their likelihood of initiating or continuing discussions about palliative care.¹⁸

For Patient B, only 29 percent of cardiologists responded that they would initiate or continue discussions about palliative care “most of the time” or “always/almost always.” For Patient C, 44 percent of cardiologists and 47 percent of PCPs were likely to recommend this course of action “most of the time” or “always/almost always.” In both cases, physicians’ recommendations fall far short of guidelines. We classify a doctor as a “comforter” if they would discuss palliative care with the patient “always / almost always” or “most of the time” for both Patients B and C (among cardiologists) or for Patient C only

¹⁸ The AHA-ACC guidelines say that “patient and family education about options for formulating and implementing advance directives and the role of palliative and hospice care services with reevaluation for changing clinical status is recommended for patients with HF [heart failure] at the end of life.” (Hunt, et al., 2005, p. e206).

(among PCPs, who did not have Patient B's vignette in their survey). In our restricted analysis sample, 27 percent of cardiologists and 44 percent of PCPs met this definition of a comforter.

We now turn to more medically intensive aspects of patient management, where the language in the vignettes was carefully constructed to relate to clinical guidelines. Several key aspects of Patient B rule out both the ICD and pacemaker insertion¹⁹ and indeed the ACC-AHA guidelines explicitly recommend against the use of an ICD for Class IV patients (Hunt et al., 2005). Since Patient C is already on maximal medications and is not a candidate for revascularization, the physician's goal should be to keep him as comfortable as possible. This should be accomplished in the least invasive manner possible (e.g., at home), and if that is not possible, in an uncomplicated setting, for example during admission to the hospital for simple diuresis. According to the ACC/AHA guidelines, no additional interventions are appropriate for this patient.²⁰

Despite these guideline recommendations, physicians in our data show a great deal of enthusiasm for additional interventions. For Patient B, over one quarter of the cardiologists surveyed (28 percent) would recommend a repeat angiography at least "some of the time." Similarly, 62 percent of cardiologists would recommend an ICD "most of the time," or "always/almost always," while 45 percent would recommend a pacemaker at least "most of the time." For Patient C, 18 percent of cardiologists would recommend an ICU/CCU

¹⁹ This includes his advanced stage, his severe (Class IV) medication refractory heart failure, and the asymptomatic non-sustained nature of the ventricular tachycardia.

²⁰ This patient's clinical improvement with increased oxygen (see vignette in Appendix B) also argues against more intensive interventions. Moreover, even a simple but invasive test, the pulmonary artery catheter, has been found to be of no marginal value over good clinical decision making in managing patients with congestive heart failure (CHF), and could even cause harm (ESCAPE, 2005).

admission, 2 percent would recommend a pulmonary artery catheter and 14 percent would recommend a pacemaker at least “most of the time.”

Cardiologists’ responses on aggressive interventions are highly correlated across Patients B and C. Of the 28 percent (N=170) of cardiologists in the full physician sample who would “frequently” or “always/almost always” recommend at least one of the high-intensity procedures for Patient C, 90 percent (N=153) would also frequently or always/almost always recommend at least one high-intensity intervention for Patient B. We use this overlap to define a “cowboy” cardiologist as one who would recommend at least one of the three possible intensive treatments for both Patients B and C at least “most of the time.” Because Vignette Patient B was not presented to PCPs, we use their responses to questions about Vignette Patient C to categorize them using the same criteria. In total, 26 percent of the cardiologists and 23 percent of PCPs in our sample are classified as cowboys.

All told, we consider four main measures of physician behavior (supply): high or low frequency of follow-up visits, a dummy variable for being a cowboy, and a dummy variable for being a comforter. How are these measures related to one another? Table 2 shows that physicians with a low follow-up frequency are more likely to be comforters and less likely to be cowboys than physicians with a high follow-up frequency. Similarly, cowboy physicians are unlikely to be comforter physicians (although a small minority were classified as both).

IV. Estimation results

Our first set of empirical results runs a “horse race” between area-level supply and demand factors to assess which set of factors can better explain actual HRR-level expenditures measures. In our second set of estimates, we return to the full sample of physicians to understand why they hold the beliefs they do by

relating individual physician vignette responses to physicians' financial and organizational incentives.

Do Survey Responses Predict Regional Medicare Expenditures?

We begin with end-of-life spending, since it is a measure of utilization that is most likely to be sensitive to differences across regions for patients who, like those in our vignettes, are at a high risk of death.²¹ Figure 4 presents scatter plots of area-level end of life spending vs. measures of supply and demand for care. The measures included here are the fraction of all physicians in the area who are cowboys (panel a), the fraction of physicians who are comforters (panel b), the fraction of physicians who recommend follow-up more frequently than recommended guidelines (panel c), and the share of patients who desire more aggressive care at the end of life (panel d). Each circle represents one HRR, with its size proportional to the size of the survey sample represented.

In the case of the three supply-side variables in Figure 4, the results are consistent with a meaningful role in determining spending. Despite the relatively small sample sizes of physicians in each HRR, end of life spending is positively related to the cowboy ratio, negatively related to the comforter ratio, and positively related to the fraction of doctors recommending follow-up visits more frequently than clinical guidelines indicate. The demand variable, in contrast, is not strongly related to spending; the data points do not reveal a clear relationship.

Table 3 explores these results more formally with regression estimates of the natural log of end-of-life expenditures in the last two years of life (columns 1-6) and overall Medicare expenditures (column 7). The statistical significance of all results is robust to adjusting standard errors using 1,000 bootstrap samples

²¹ End-of-life spending is also highly correlated with prospective measures such as spending for advanced lung-cancer (Keating et al., 2016) and overall spending among those at high risk of death (Kelley et al., 2017).

of patient and physician surveys. As the first column shows, the local proportion of cowboys and comforters explains 34 percent of the observed regional variation in end-of-life spending. Further, the estimated magnitudes are large: increasing the percentage of cowboys by one standard deviation (15 percentage points) is associated with a 12 percent increase in 2-year end-of-life expenditures, while increasing the fraction of comforters by one standard deviation (18 percentage points) implies a 5.7 percent decrease in those expenditures. These relationships between spending and the local fractions of cowboys and comforters are robust to a number of alternative specifications.²² Results also hold when each physician sample is analyzed separately (Appendix C, Tables 1 and 2) and when survey responses are age, sex, and race/ethnicity-adjusted (Appendix C, Tables 3 and 4).

Column 2 of Table 3 shows that the indicator for the share of physicians recommending high frequency follow-up is also a meaningful predictor of HRR-level end-of-life spending; conditional on the fraction of cowboys and comforters, an increase of one standard deviation (12 percentage points) of high follow-up physicians is associated with a 13 percent increase in 2-year end-of-life spending. While the low frequency follow-up coefficient is meaningful in magnitude – implying roughly a 3 percent reduction in spending for a one standard deviation increase in low follow-up physicians – it is not statistically significant. Notably, the combination of just these four variables about supplier beliefs alone can explain over 60 percent of the observed end-of-life spending variation in the 74 HRRs in this sample.²³

²² In robustness tests not presented, we further find that the observed patterns are robust to the exclusion of “small cells” (HRRs with fewer than eight physician surveys), to controlling for percent poverty and percent black at the HRR level, and to re-weighting HRRs by their patient population.

²³ As Black, et al. (2000) note, the OLS estimate is a lower bound and under weak assumptions, the expected value of the OLS parameter estimate is of smaller magnitude than the true parameter. (The R^2 is also a lower bound owing to measurement error.)

The next two columns add various HRR-level measures of patient preferences to the regressions: the share of patients wishing to have unneeded tests in a cardiac setting, the share of patients wanting to see an unneeded cardiologist, the share of patients preferring aggressive end-of-life care, and the share preferring comfortable end-of-life care. None of these variables are statistically significant at the 5 percent level. Excluding the physician belief variables entirely, as in column 6, the R-squared value from the regression incorporating patient preference variables alone is 0.20 (slightly larger than in Baker et al., 2014). In further sensitivity analyses, we also considered using alternate and/or additional measures of patient demand recovered from the patient survey, or financial variables from the physician surveys. When predicting Medicare spending in the last two years of life, these alternate measures do not increase the explanatory power of our regression models, nor are the coefficients related to patient demand factors statistically significant at conventional levels.²⁴

Regressions for the natural log of total per patient Medicare expenditures are presented in the final column of Table 3; coefficients are similar but in this specification, the role of patient preferences for comfort-oriented care emerges as statistically significant, consistent with Finkelstein et al. (2016), who find that patient demand explains a significant share of Medicare spending in a non-end-of-life context.

We further consider the possibility that physicians' aggressiveness in end-of-life care may be related to overall quality. We analyze the range of

²⁴ Nor were our results driven by differences between east-coast versus west-coast medical practices; similar results were obtained when east and west coasts were estimated separately. It is also possible that there is an interaction effect between patient preferences and physician beliefs – for example if aggressive physicians interact with patients with preferences for aggressive care – to generate even more utilization (or conversely for comforter physicians and patients who demand palliative care to interact and reduce care provided in a mutually reinforcing way). We test this in Appendix C, Table C6, but do not find evidence for this hypothesis.

quality measures from the CMS Hospital Compare data (December 2005 data release,²⁵ averaged at the HRR level), but find few statistically significant correlations between the fraction of aggressive physicians (cowboys) and quality measures. Of the seventeen quality measures considered, only two²⁶ have a statistically significant correlation with the fraction of cowboys in a region (and those were negative correlations); the remainder showed no significant correlation with the cowboy fraction.

Expenditures and Outcomes in Acute Myocardial Infarction

We next consider expenditures and outcomes in a sample of AMI patients. By focusing on physician vignette measures, which we think are of primary importance in acute and post-acute treatment decisions, we are able to expand the sample size to 137 HRRs accounting for 71% of the entire AMI sample or a total of 560,392 patients.²⁷ Spending measures are adjusted for differences across regions in prices using the Gottlieb et al. (2010) method,²⁸ and all regressions are clustered at the HRR level. Summary statistics are presented in Table 7 of Appendix C.

Regression estimates are presented in Table 4, with expenditures in levels in column 1, and in natural logs in column 2. As expected, the risk-adjustment HCCs are large in magnitude and highly significant, but conditional

²⁵ Data available at: <https://data.medicare.gov/data/archives/hospital-compare>

²⁶ The two quality measures were: (a) AMI patients with left ventricular systolic dysfunction (and without contraindications) who were prescribed an angiotensin-converting enzyme (ACE) inhibitor or an angiotensin II receptor blocker (ARB) at hospital discharge, and (b) Pneumonia patients who receive their first dose of antibiotic within 4 hours of arrival at the hospital.

²⁷ In sensitivity analysis, not reported, we also included patient demand variables, but none were significant in any of the regression analyses, except for one: The patient aggressiveness measure was associated with a *lower* probability of early PCI (stenting), the reverse of what one might expect.

²⁸ Gottlieb et al. (2010) use a price-adjustment method that sets a common national price for each individual Medicare service, and thus removes price differences across regions owing to cost-of-living adjustments, payments provided for graduate medical programs, and disproportionate-share programs, and other items.

on health status, ZIP income quintile coefficients are all generally small in magnitude. The coefficients for cowboy (\$7,644) and high revisit rates (\$16,562) are large relative to the mean value (\$45,827) and highly statistically significant. There is a strong negative coefficient for comforters (-\$2,911), and while the coefficient for low revisit rates (-\$3,269) is in the expected direction, the estimate is not statistically significant at conventional levels, as was the case in Table 3. Similar results are shown in the natural log model, albeit with coefficients that imply slightly smaller proportional effects. Regression estimates weighted by the number of physicians in the survey (Columns 3 and 4) exhibit coefficients with larger magnitudes than the unweighted regressions; the coefficients imply that high-follow-up physicians are associated with roughly 36% greater one-year expenditures for AMI patients.

Finally, Table 4 provides evidence on the hypothesis that regions with a greater share of cowboy or high follow-up physicians experience higher quality care for AMI patients. Column 5 provides estimated marginal effects from probit models of one-year survival, with a mean of 68 percent. None of the physician characteristics are individually significant predictors of survival, and the p-value for the F-test of all variables combined is 0.43.

Consider next the estimates for early PCI (mean, 26 percent), in column 6 of Table 4. Neither the cowboy nor comforter variables are associated with early PCI. Follow-up rates, by contrast, are associated *negatively* with early PCI; the coefficient for the fraction of high follow-up rate physicians implies a 6.3 percent lower early PCI rate, with the converse true for low-follow-up physicians (The F-test of all four variables is jointly significant at the 0.01 level). Along with results reported above, these estimates for early PCI provide no evidence for the hypothesis that “cowboy” physicians, as defined in this study, are more aggressive because of greater skill (e.g., Chandra and Staiger, 2007). Instead, these results are consistent with our model in which physician

beliefs that are unsupported by clinical evidence can increase utilization without benefiting patients.

What factors predict physician responses to the vignettes?

To this point, we have shown that aggregated physician vignette responses explain regional patterns in spending, and that these responses vary across areas far more than would be expected to occur at random. But this finding raises the question: what explains observed variation in physician treatment beliefs? In this section, we use the entire sample of physicians to test for the relative importance of financial and organizational factors in explaining physician recommendations. We interpret the residual, conditional on financial and organizational factors, as “beliefs.”

Various measures relating to reimbursement are reported in Table 1 for all physicians. We focus on three of these in particular: the share of patients for whom a physician is reimbursed on a capitated basis (on average, 15 percent), the share of a physician’s patients whose primary health insurance is Medicare (42 percent), and the share of a physician’s patients on Medicaid (10 percent), with capitated payment and Medicaid generally associated with lower marginal reimbursement. A second set of questions asks about characteristics of the physician and her practice: 29 percent work in small practices (solo or 2-person), 57 percent work in single or multi-specialty group practices, and 13 percent work in HMOs or hospital-based practices. We also observe a number of characteristics about the physician, including age, gender, whether she is board certified, and the number of days per week she spends seeing patients.

Third, the survey asks about a physician’s self-assessed responsiveness to external incentives, including how frequently, if ever, she had intervened on a patient for non-clinical reasons in the past 12 months. We create a set of binary variables that indicates whether a physician responded to each set of incentives at least “sometimes” (i.e. “sometimes” or “frequently”) over the past year. For

example, among cardiologists, 31 percent reported that they had sometimes or frequently performed a cardiac catheterization because of the expectations of the referring physician and 38 percent of all physicians reported having intervened medically because of a colleague's expectations (Table 1).

Table 5 presents coefficients from a linear probability model with HRR-level random effects for three regressions at the physician level (results are similar with clustering at the HRR level). Our dependent variables are binary indicators for whether the physician is a cowboy (column 1), a comforter (column 2), or recommends high frequency follow-up (column 3), the three categories with predictive power in the main specifications (Table 3). In each model, we include basic physician demographics: age, gender, board certification status, whether the physician is a cardiologist, days per week spent seeing patients, and cardiologists per 100,000 Medicare beneficiaries.

Notably, some physician characteristics are predictive of physician types: cardiologists are significantly more likely (by over 20 percentage points) to be high follow-up doctors, and older physicians in the sample are somewhat more likely to be cowboys and high follow-up doctors: a 20-year increase in age is associated with an 6 percentage point increase in the probability of being a cowboy and a 8 percentage point increase in the probability of being a high follow-up doctor. Physicians seeing patients on more days per week are more likely to be comforters.

A substitution effect would imply that lower incremental reimbursements associated with treating a larger share of Medicaid and capitated patients would lead to fewer interventions and more palliative care, while an income effect would suggest the opposite. Table 5 shows that physicians with a larger fraction of Medicaid (but not capitated patients) are *more* likely to be cowboys, supporting a stronger income effect in our sample.

Some organizational factors are clearly associated with physician beliefs about appropriate practice. Physicians in solo or 2-person practices are far more likely to be both cowboys and high follow-up doctors than physicians in single or multi-specialty group practices or physicians who are part of an HMO or a hospital-based practice. Whether cardiologists accommodate referring physicians – a financial factor (since cardiologists benefit financially from future referrals) as well as an organizational one – is a positive predictor of cowboy status among cardiologists.²⁹ Self-reported responsiveness to malpractice concerns are high (nearly 39% of physicians report intervening for this reason), but are not statistically significant predictors of physician type.³⁰ While individual-level regressions with binary dependent variables often exhibit modest R^2 (the largest is just 0.16), the limited explanatory power of these regressions suggests a key role for physician *beliefs* regarding the productivity of treatments, rather than behaviors systematically related to financial, organizational, or other factors.

Challenges to Identification

One concern with the use of vignettes is the possibility that physicians who practice in areas with high rates of prevailing illness may recommend higher rates of follow-up care simply because their patients are sicker on average. This would then lead to a spurious correlation between the fraction of high follow-up (or cowboy) physicians and spending (Sheiner, 2014). Empirically, however, physicians in the quartile of HRRs with the greatest level of poverty are *less* likely to recommend a follow-up visit within 3 months than

²⁹ Note that the question on responding to referring doctor expectations appeared in the cardiologist survey only, and so reflects the preferences of cardiologists only; the cardiology dummy variable therefore reflects both the pure effect of being a practicing cardiologist, and a secondary adjustment arising from the referral question being set to zero for all PCPs.

³⁰ Perhaps because procedures performed on high-risk patients (such as Patients B and C) can increase the risk of a malpractice suit (Currie and MacLeod, 2008).

the average physician, although the results are not significant. Similarly, there was a negative but statistically insignificant association between the fraction of a physician's Medicaid patients and the likelihood of a quick follow-up visit.³¹ Finally, in separate, unreported regressions, we confirm that results in Table 3 are robust to controlling for percent poverty and the percent of black patients at the HRR level.

Nor is it the case that more intensive treatment is medically appropriate in the setting of congestive heart failure patients, whether for low-income or high-income patients. For example, one of the possible “cowboy” interventions for Patient B, a 75-year-old with Class IV heart failure is an implantable defibrillator. Professional societies uniformly recommend against its use for Class IV CHF patients – and indeed, Medicare refuses to pay for it – because the risks (faulty leads, infections, painful death) outweigh the benefits for the average patient. It would be even less appropriate for patients with poor access to follow-up care and higher mortality risk, as one might find in low-income states.

Finally, Sheiner (2014) notes that better practice styles might be associated with higher social capital (e.g., Skinner and Staiger, 2007), and thus proxy for unobservable patient health conditional on conventional risk adjustment.³² If so, moving from a state with better practice styles to worse practice styles should have no impact on spending in the short-term. Yet Finkelstein et al. (2016) found that our measure of “cowboy cardiologists” explains significant differences in Medicare expenditures for elderly enrollees

³¹ Nor is there evidence that physicians respond differently in prescribing follow-up visits based on patient race or income, although there were significant differences by sex (Aber et al., 2006).

³² Recall that the AMI regressions adjust for the HCC score, so any additional biases related to social capital would arise from unobservable health factors uncorrelated with the HCC score. Even the HCC “risk-adjustment” score is likely to capture physician intensity, as patients treated more intensively tend to be diagnosed with more diseases (Song et al., 2010; Finkelstein et al., 2016).

who move. These findings are consistent with the view that physician beliefs exert a large impact on health care utilization.

V. Discussion and Conclusion

While there is a good deal of regional variation in medical spending and care utilization in the U.S. and elsewhere, there is little agreement about the causes of such variations. Do differences arise from variation in patient demand, variation in physician behavior, or both? In this paper, we find that regional measures of patient demand, as characterized by responses to a nationwide survey, have modest predictive associations with regional end-of-life expenditures (Anthony, et al., 2009; Baker et al., 2014). We find a much stronger role for local physician beliefs in explaining Medicare expenditures, even after adjusting for conventional demographic, organizational, and financial incentives facing physicians.

Although practice type is associated with treatment recommendations, physician beliefs are not otherwise strongly correlated with conventional organizational and financial incentives for physicians that typically play a central role in most economic models of physician behavior. Traditional factors in supplier-induced demand models, such as the fraction of patients paid through capitation (or on Medicaid), or physicians' responsiveness to financial factors, play a relatively small role in explaining equilibrium variations in utilization patterns in our context. Organizational factors, such as accommodating colleagues, explain somewhat more of the observed variation in individual intervention decisions, leaving a considerable degree of unexplained differences in physician beliefs about the effectiveness of specific procedures and treatments.³³

³³ This result is consistent with Epstein and Nicholson (2009), who find large variations in Cesarean section surgical rates among obstetricians within the same practice, and with Chassin's

Unfortunately, we cannot shed light on *how* these differences in physician beliefs arise. Previous hypotheses have included variation in medical training (Epstein and Nicholson, 2009) or personal experiences with different interventions (Levine-Taub, et al., 2015). Yet simple heterogeneity in physician beliefs alone cannot explain regional variation in expenditures, since the observed regional patterns in physician beliefs exhibit far greater inter-region variation than would be expected due to chance: spatial correlation in physician beliefs is clearly implied by the data. We do find that physicians' propensity to intervene for non-clinical reasons is related to the expectations of physicians with whom they regularly interact, a result consistent with network models of diffusion (Moen et al., 2017). Similarly, Molitor (2016) finds that cardiologists who move to more or less aggressive regions change their practice style to better conform to local norms.

How much would Medicare expenditures change in a counterfactual setting in which there were no cowboys, all physicians were comforters, and all physicians met guidelines for follow-up care? While we recognize the conjectural nature of this calculation and the fact that our estimates are limited to the Medicare fee-for-service population in the HRRs where we have survey data, our results imply that in total, these regions would see a decline of 35 percent in end-of-life Medicare expenditures, 12 percent for spending following AMI, and up to 12 percent in total Medicare expenditures.³⁴

There are several limitations to our study. One is that our speculative inferences above regarding the importance of physician beliefs are based solely on Medicare fee-for-service data, and may not extend to other populations. Indeed, Cooper et al. (2015) found a very small regional correlation between

(1993) "Enthusiasm Hypothesis" – that regional differences in the use of health care services are caused by differences in the prevalence of physicians who are enthusiasts for those services.

³⁴ The AMI estimates use column 3 from Table 4.

Medicare expenditures and commercially-insured under-65 individuals living in the same area. This finding is explained in part by the negative correlation between commercial prices and Medicare spending (Romley et al., 2015), but there is also evidence on the correlation between utilization rates (that is, quantities) between commercial and Medicare enrollees of roughly 0.6 or less (IOM, 2013; Chernew et al., 2010). Most relevant for our analysis, Baker et al. (2008) used California data to compare end-of-life spending between Medicare and commercially insured fee-for-service and preferred provider enrollees, and found a correlation of 0.64 in hospital days during the last 2 years of life, suggesting a stronger correlation across age groups in similar types of treatment. Nonetheless, these studies suggest caution in making inferences about *overall* regional intensity from the beliefs of physicians regarding the treatment of cardiovascular disease, as the intensity of beliefs could be quite different for (e.g.) obstetricians in the same region treating low-birthweight babies.

Our results do not imply that economic incentives are unimportant. Clearly, changes in payment margins have a large impact on behavior, as has been shown in a variety of settings (Clemens and Gottlieb, 2014; Jacobson et al., 2006). But the prevalence of geographic variations in European countries, where economic incentives are often blunted (Skinner, 2012), is consistent with the view that economic incentives cannot entirely explain observed geographic variations in health utilization, and that physician beliefs could plausibly play a large role in explaining such variations. A better understanding of both how physician beliefs form, and how they can be changed, is therefore a key challenge for future policy and research.

References

- Ahmed, Ali, Wilbert S. Aronow, and Jerome L. Fleg. 2006. "Higher New York Heart Association Classes and Increased Mortality and Hospitalization in Heart Failure Patients with Preserved Left Ventricular Function." *American Heart Journal* 151(2): 444-450.
- Ameriks, John, Andrew Caplin, Steven Laufer, and Stijn van Nieuwerburgh. 2011. "The Joy of Giving or Assisted Living? Using Strategic Surveys to Separate Public Care Aversion from Bequest Motives." *Journal of Finance* 66(2): 519-561.
- Ameriks, John, Joseph Briggs, Andrew Caplin, Matthew D. Shapiro, and Christopher Tonetti. 2016. "Late-in-Life Risks and the Under-Insurance Puzzle." NBER Working Paper No. 22726.
- Anthony, Denise L., M. Brooke Herndon, Patricia M. Gallagher, Amber E. Barnato, Julie P.W. Bynum, Daniel J. Gottlieb, Elliott S. Fisher, and Jonathan S. Skinner. 2009. "How Much Do Patients' Preferences Contribute to Resource Use?" *Health Affairs* 28(3): 864-873.
- Arber, Sara, John McKinlay, Ann Adams, Lisa Marceau, Carol Link, and Amy O'Donnell. 2006. "Patient Characteristics and Inequalities in Doctors' Diagnostic And Management Strategies Relating to CHD: A Video-Simulation Experiment." *Social Science & Medicine*. 62(1): 103-115.
- Baker, Laurence C., Elliott S. Fisher, and John E. Wennberg. 2008. "Variations in Hospital Resource Use for Medicare and Privately Insured Populations in California." *Health Affairs* 27(2): w123-w134.
- Baker, Laurence C., M. Kate Bundorf, and Daniel P. Kessler, 2014. "Patients' Preferences Explain a Small but Significant Share of Regional Variation in Medicare Spending," *Health Affairs* 33(6): 957-63.
- Barnato, Amber E., M. Brooke Herndon, Denise L. Anthony, Patricia M. Gallagher, Jonathan S. Skinner, Julie PW Bynum, and Elliott S. Fisher. 2007. "Are Regional Variations in End-Of-Life Care Intensity Explained by Patient Preferences?: A Study of the US Medicare Population." *Medical Care* 45(5): 386-393.
- Barsky, Robert B., F. Thomas Juster, Miles S. Kimball, and Matthew D. Shapiro. 1997. "Preference Parameters and Behavioral Heterogeneity: An Experimental

Approach in the Health and Retirement Study." *The Quarterly Journal of Economics* 112(2): 537-579.

Baumann, Andrea O., Raisa B. Deber, Gail G. Thompson. 1991. "Overconfidence Among Physicians and Nurses: The 'Micro-Certainty, Macro-Uncertainty' Phenomenon." *Social Science and Medicine* 32(1): 167-74.

Bederman, S. Samuel, Peter C. Coyte, Hans J. Kreder, Nizar N. Mahomed, Warren J. McIsaac, and James G. Wright. 2011. "Who's in the Driver's Seat? The Influence of Patient and Physician Enthusiasm on Regional Variation in Degenerative Lumbar Spinal Surgery: A Population-based Study." *Spine* 36(6): 481-489.

Black, Dan A.; Mark C. Berger; Frank A. Scott. 2000. "Bounding Parameter Estimates with Nonclassical Measurement Error." *Journal of the American Statistical Association*. 95(451): 739-748.

Boden, William E., O'Rourke, Robert A., Teo, Koon K., and the COURAGE Trial Research Group. 2007. "Optimal Medical Therapy with or without PCI for Stable Coronary Disease" *New England Journal of Medicine* 356: 1503-1516.

Campbell, Eric G., Sowmya R. Rao, Catherine M. DesRoches, Lisa I. Iezzoni, Christine Vogeli, Dragana Bolcic-Jankovic, and Paola D. Miralles. 2010. "Physician Professionalism and Changes in Physician-Industry Relationships From 2004 to 2009." *Archives of Internal Medicine*, 170(20): 1820-26.

Centers for Medicare and Medicaid Services, National Health Expenditure Fact Sheet, updated June, 2017. <https://www.cms.gov/research-statistics-data-and-systems/statistics-trends-and-reports/nationalhealthexpenddata/nhe-fact-sheet.html>

Chandra, Amitabh, and Douglas O. Staiger. 2007. "Productivity Spillovers in Healthcare: Evidence from the Treatment of Heart Attacks." *Journal of Political Economy* 115: 103-140.

Chandra, Amitabh, and Douglas O. Staiger. 2017. 'Identifying Sources of Inefficiency in Health Care.' National Bureau of Economic Research Working Paper 24035.

- Chandra, Amitabh, and Jonathan Skinner. 2012. "Productivity Growth and Expenditure Growth in U.S. Health Care." *Journal of Economic Literature* 50(3): 645-80.
- Chassin, Mark R. 1993. "Explaining Geographic Variations: The Enthusiasm Hypothesis." *Medical Care* 31(5 Suppl): YS37-YS44.
- Chernew, Michael E., Lindsay M. Sabik, Amitabh Chandra, Teresa B. Gibson, and Joseph P. Newhouse. 2010. "Geographic Correlation between Large-Firm Commercial Spending and Medicare Spending." *The American Journal of Managed Care*. 16(2): 131.
- Clemens, Jeffrey, and Joshua D. Gottlieb. 2014. "Do Physicians' Financial Incentives Affect Medical Treatment and Patient Health?." *The American Economic Review*. 104(4): 1320-1349.
- Comin, Diego, Jonathan Skinner, and Douglas Staiger. 2017. "Overconfidence and the Diffusion of Medical Technology," Working Paper, Dartmouth College.
- Cooper, Zack, Stuart V. Craig, Martin Gaynor, and John Van Reenen. 2015. "The Price Ain't Right? Hospital Prices and Health Spending on the Privately Insured," NBER Working Paper No. 21815.
- Currie, Janet, and W. Bentley MacLeod. 2008. "First Do No Harm? Tort Reform and Birth Outcomes." *Quarterly Journal of Economics* 123(2): 795-830.
- Dartmouth Atlas of Health Care. 2013.
<http://www.dartmouthatlas.org/tools/downloads.aspx>.
- Doyle Jr, Joseph J. 2011. "Returns to Local-Area Healthcare Spending: Evidence from Health Shocks to Patients Far from Home." *American Economic Journal: Applied Economics* 3(3): 221-243.
- Dranove, David, and Paul Wehner. 1994. "Physician-Induced Demand for Childbirths," *Journal of Health Economics* 13(1): 61-73.
- Dresselhaus, Timothy R., John W. Peabody, Jeff Luck, and Dan Bertenthal. 2004. "An Evaluation of Vignettes for Predicting Variation in the Quality of Preventive Care." *Journal of General Internal Medicine* 19(10): 1013-1018.

Epstein, Andrew J., and Sean Nicholson. 2009. "The Formation and Evolution of Physician Treatment Styles: An Application to Cesarean Sections," *Journal of Health Economics* 28(6): 1126-1140.

ESCAPE: The ESCAPE Investigators and ESCAPE Study Coordinators. 2005. "Evaluation Study of Congestive Heart Failure and Pulmonary Artery Catheterization Effectiveness: The ESCAPE Trial." *Journal of the American Medical Association*. 294(13): 1625-1633.

Evans, Spencer C., Michael C. Roberts, Jared W. Keeley, Jennifer B. Blossom, Christina M. Amaro, et al. 2015. "Vignette Methodologies for Studying Clinicians' Decision-Making: Validity, Utility, and Application in ICD-11 Field Studies." *International Journal of Clinical and Health Psychology* 15(2): 160-170.

Finkelstein, Amy, Matthew Gentzkow, and Heidi Williams. 2016. "Sources of Geographic Variation in Health Care: Evidence from Patient Migration." *The Quarterly Journal of Economic* 121(4): 1681-1726.

Fisher, Elliott S., David E. Wennberg, Threse A. Stukel, Daniel J. Gottlieb, Francis Lee Lucas, and Etoile L. Pinder. 2003 "The implications of regional variations in Medicare spending. Part 1: the content, quality, and accessibility of care." *Annals of internal medicine* 138: 273-287.

Fisher, Elliott S., David E. Wennberg, Terese A. Stukel, Daniel J. Gottlieb, Francis Lee Lucas, et al. 2003. "The Implications of Regional Variations in Medicare Spending. Part 2: Health Outcomes and Satisfaction with Care." *Annals of Internal Medicine* 138: 288-98.

Gogineni, Keerthi, Katherine L. Shuman, Derek Chinn, Nicole B. Gabler, and Ezekiel J. Emanuel. 2015. "Patient Demands and Requests for Cancer Tests and Treatments." *JAMA Oncology* 1(1): 33-39.

Gottlieb, Daniel J., Weiping Zhou, Yunjie Song, Kathryn Gilman Andrews, Jonathan S. Skinner, and Jason M. Sutherland. 2010. "Prices Don't Drive Regional Medicare Spending Variations." *Health Affairs* 29(3): 537-543.

Hunt, Sharon Ann, William T. Abraham, Marshall H. Chin, Arthur M. Feldman, Gary S. Francis, et al. 2005. "ACC/AHA 2005 Guideline Update for the Diagnosis and Management of Chronic Heart Failure in the Adult" *Circulation* 112:e154-e235.

Institute of Medicine, Committee on Geographic Variation in Health Care Spending and Promotion of High-Value Care; Board on Health Care Services; Newhouse JP, Garber AM, Graham RP, et al., editors. "Variation in Health Care Spending: Target Decision Making, Not Geography." Washington (DC): National Academies Press (US); 2013 Oct 1. Available from: <http://www.ncbi.nlm.nih.gov/books/NBK201647/>.

Jacobson, Mireille, A. James O'Malley, Craig C. Earle, Juliana Pakes, Peter Gaccione and Joseph P. Newhouse. 2006. "Does Reimbursement Influence Chemotherapy Treatment for Cancer Patients?." *Health Affairs* 25(2): 437-443.

Keating, Nancy L., Mary Beth Landrum, Haiden A. Huskamp, Elena M. Kouri, Holly G. Prigerson, Deborah Schrag, Paul K. Maciejewski, Mark C. Hornbrook, and David A. Haggstrom. 2016. "Dartmouth Atlas Area-Level Estimates of End-of-Life Expenditures: How Well Do They Reflect Expenditures for Prospectively Identified Advanced Lung Cancer Patients?." *Health Services Research* 51(4): 1584–1594

Keeley, Ellen C., Judith A. Boura, and Cindy L. Grines. 2003. "Primary Angioplasty Versus Intravenous Thrombolytic Therapy for Acute Myocardial Infarction: A Quantitative Review of 23 Randomised Trials." *The Lancet* 361(9351):13-20.

Kelley, Amy S., Evan Bollens-Lund, Kenneth E. Covinsky, Jonathan S. Skinner, and R. Sean Morrison. 2017. "Prospective Identification of Patients at Risk for Unwarranted Variation in Treatment." *Journal of Palliative Medicine*. Epub ahead of publication.

Levine-Taub, Anna A., Anton Kolotilin, Robert S. Gibbons, Ernst R. Berndt. 2015. "The Diversity of Concentrated Prescribing Behavior: An Application to Antipsychotics." *Journal of Health Economics* 40: 26-39.

Lucas, Francis Lee, Andrea E. Siewers, David J. Malenka, and David E. Wennberg. 2008. "Diagnostic-Therapeutic Cascade Revisited. Coronary Angiography, Coronary Artery Bypass Surgery, and Percutaneous Coronary Intervention in the Modern Era." *Circulation* 118: 2797-2802.

Lucas, Frances Lee, Brenda E. Sirovich, Patricia M. Gallagher, Andrea E. Siewers, and David E. Wennberg. 2010. "Variation in Cardiologists' Propensity to Test and Treat: Is it Associated with Regional Variation in Utilization?" *Circulation: Cardiovascular Quality and Outcomes* 3: 253-60.

Mandelblatt Jeanne S., Leigh Anne Faul, Gheorghe Luta, Solomon B. Makgoeng, Claudine Isaacs, et al. 2012. "Patient and Physician Decision Styles and Breast Cancer Chemotherapy Use in Older Women: Cancer and Leukemia Group B Protocol 369901" *Journal of Clinical Oncology* 30(21): 2609-14.

McGuire, Thomas G. 2011. "Physician Agency and Payment for Primary Medical Care." In *The Oxford Handbook of Health Economics*, edited by Sherry Glied and Peter C. Smith. Oxford: Oxford University Press.

McGuire, Thomas G., Pauly, M. 1991. "Physician Response to Fee Changes with Multiple Payers." *Journal of Health Economics* 10(4): 385-410.

Moen, Erika L., Andrea M. Austin, Julie P. Bynum, Jonathan Skinner, and A. James O'Malley. 2016. "An analysis of Patient-Sharing Physician Networks and Implantable Cardioverter Defibrillator Therapy." *Health Services and Outcomes Research Methodology* 16(3): 132-153.

Moliter, David. 2016. "The Evolution of Physician Practice Styles: Evidence from Cardiologist Migration." NBER Working Paper No. 22478. Forthcoming, *American Economic Journal: Economic Policy*.

Newhouse, Joseph P., and Alan M. Garber. "Geographic variation in Medicare services." *New England Journal of Medicine* 368, no. 16 (2013): 1465-1468.

Pauly, Mark. 1980. *Doctors and Their Workshops: Economic Models of Physician Behavior* Chicago: University of Chicago Press.

Peabody John W., Jeff Luck, Peter Glassman, Sharad Jain, Joyce Hansen, Maureen Spell, and Martin Lee. 2004. "Measuring the Quality of Physician Practice by Using Clinical Vignettes: A Prospective Validation Study." *Annals of Internal Medicine* 141(10): 771-80.

Peabody, John W., Jeff Luck, Peter Glassman, Timothy R. Dresselhaus, and Martin Lee. 2000. "Comparison of Vignettes, Standardized Patients, and Chart Abstraction: A Prospective Validation Study of 3 Methods for Measuring Quality." *Journal of the American Medical Association*. 283(13): 1715-1722.

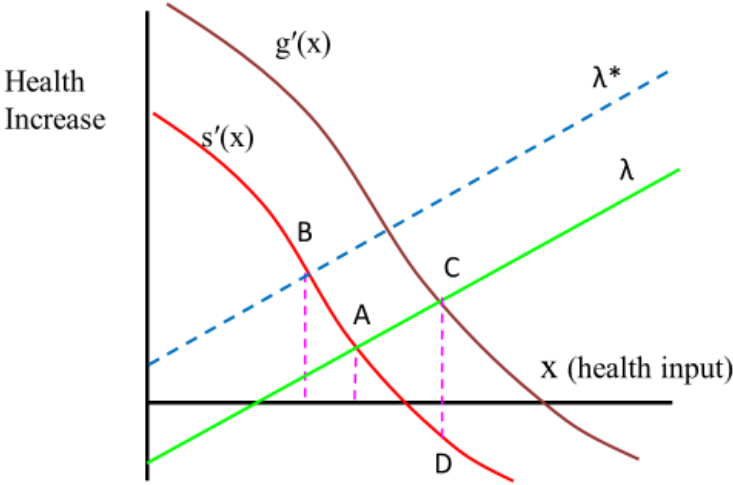
Rao, Jaya K., Lynda A. Anderson, Feng-Chang Lin, and Jeffrey P. Laux. 2014. "Completion of Advance Directives Among U.S. Consumers." *American Journal of Preventive Medicine* 46(1): 65-70.

- Ransohoff, David F., Mary McNaughton Collins, and Floyd J. Fowler Jr. 2002. "Why Is Prostate Cancer Screening So Common When the Evidence Is So Uncertain? A System Without Negative Feedback." *The American Journal of Medicine* 113(8): 663-67.
- Romley, John A., Anupam B. Jena, and Dana P. Goldman. 2011. "Hospital Spending and Inpatient Mortality: Evidence from California." *Annals of Internal Medicine* 154(3): 160-167.
- Romley, John A., Sarah Axeen, Darius N. Lakdawalla, Michael E. Chernew, Jay Bhattacharya, and Dana P. Goldman. 2015. "The Relationship between Commercial Health Care Prices and Medicare Spending and Utilization." *Health Services Research* 50(3): 883-896.
- Sheiner, Louise. 2014. "Why the Geographic Variation in Health Care Spending Cannot Tell Us Much about the Efficiency or Quality of our Health Care System," *Brookings Papers on Economic Activity* 2014(2):1-72.
- Sirovich, Brenda, Patricia M. Gallagher, David E. Wennberg, and Elliott S. Fisher. 2008. "Discretionary Decision Making by Primary Care Physicians and the Cost of U.S. Health Care." *Health Affairs* 27: 813-23.
- Skinner, Jonathan, 2012. "Causes and Consequences of Geographic Variation in Health Care." In *Handbook of Health Economics*, edited by Thomas G. McGuire, Mark Pauly, and Pedro P. Barros. Vol. 2. North Holland: Amsterdam.
- Skinner, Jonathan, and Douglas Staiger. 2007. "Technological Diffusion from Hybrid Corn to Beta Blockers." In *Hard-to-Measure Goods and Services: Essays in Honor of Zvi Griliches*, edited by E. Berndt and C. M. Hulten. University of Chicago Press and NBER: Chicago.
- Song, Yunjie, Jonathan Skinner, Julie Bynum, Jason Sutherland, John E. Wennberg, and Elliott S. Fisher. 2010. "Regional Variations in Diagnostic Practices." *New England Journal of Medicine* 363(1): 45-53.
- U.S. Department of Health and Human Services. 2004. Seventh Report of the Joint National Committee on Prevention, Detection, Evaluation, and Treatment of High Blood Pressure (JNC7). NIH Publication No. 04-5230.

Wennberg, John E., Benjamin A. Barnes and Michael Zubkoff. 1982. "Professional Uncertainty and the Problem of Supplier-Induced Demand." *Social Science and Medicine* 16(7): 811–824.

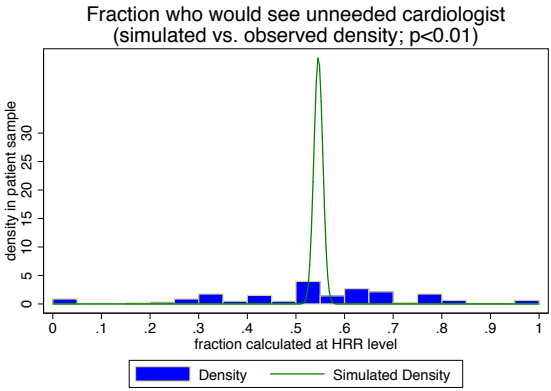
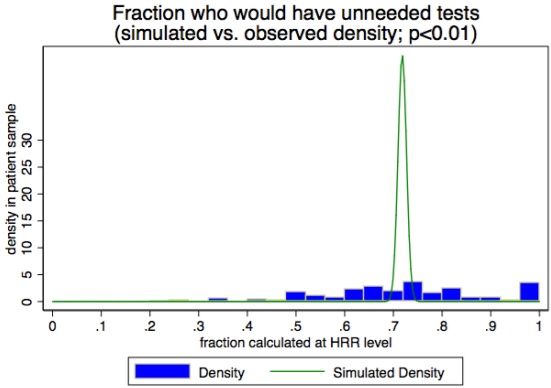
Wennberg, David E., John D. Dickens, Jr., Lois Biener, Floyd J. Fowler, Jr., David N. Soule, and Robert B. Keller. 1997. "Do Physicians Do What They Say? The Inclination to Test and Its Association with Coronary Angiography Rates." *Journal of General Internal Medicine* 12(3):172-176.

Figure 1: Theoretical Model of Equilibrium Health Care Intensity

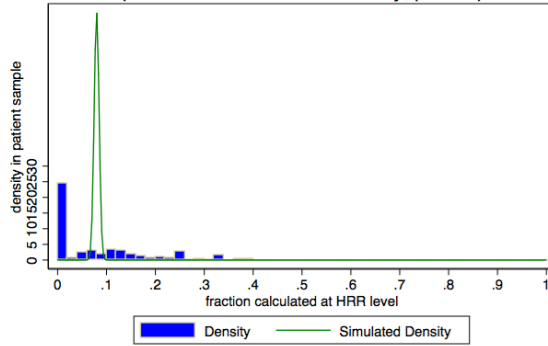


Notes: The model that corresponds to this figure is presented in detail in Appendix A. The curves $s'(x)$ and $g'(x)$ represent two distinct marginal benefit curves – either real or perceived. The lines λ^* and λ represents two different sets of constraints. In the model, physicians assess the expected marginal benefit of treatment and the constraints that they face and deliver care up to the point where the two curves intersect.

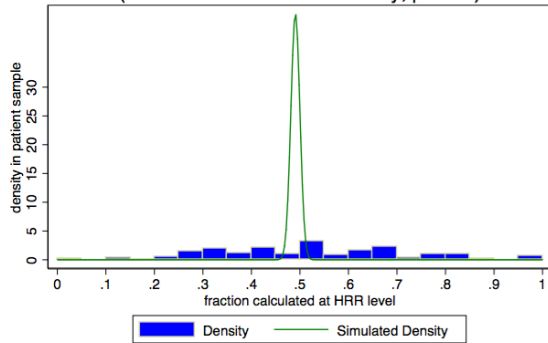
Figure 2: Distributions of observed Patient Preferences vs. Simulated Distributions (based on 1000 bootstrap samples with replacement)



Fraction of patients with aggressive EOL preferences
(simulated vs. observed density; $p < 0.01$)



Fraction of patients with comfort EOL preferences
(simulated vs. observed density; $p < 0.01$)



Notes: This figure shows density plots of patient preferences for the main questions in the patient survey for the 74 HRRs considered (weighted by observations per HRR). A simulated distribution based on 1,000 bootstrap samples under the null hypothesis that individuals were randomly assigned to areas is superimposed on the observed distributions. P-values for over-dispersion are reported in Table 1 and indicate that the observed variation is significantly greater than can be explained by random variation.

Figure 3a: Distribution of Length of Time before Next Visit for Patient with Well-Controlled Angina (Regional Averages for Cardiologists)

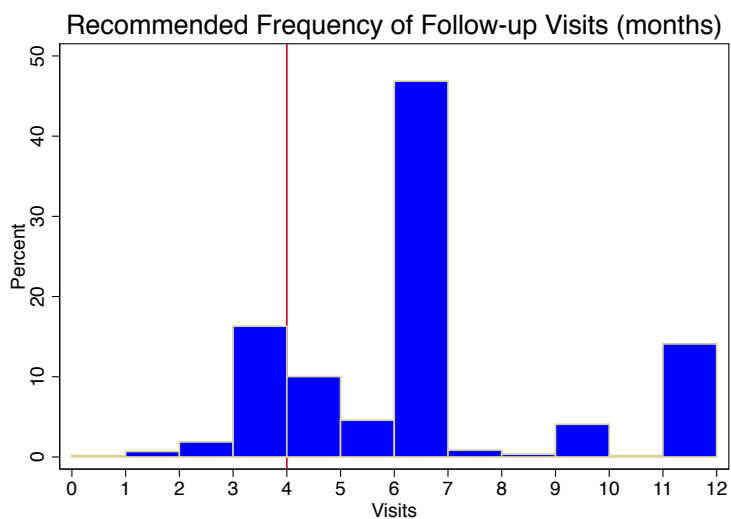
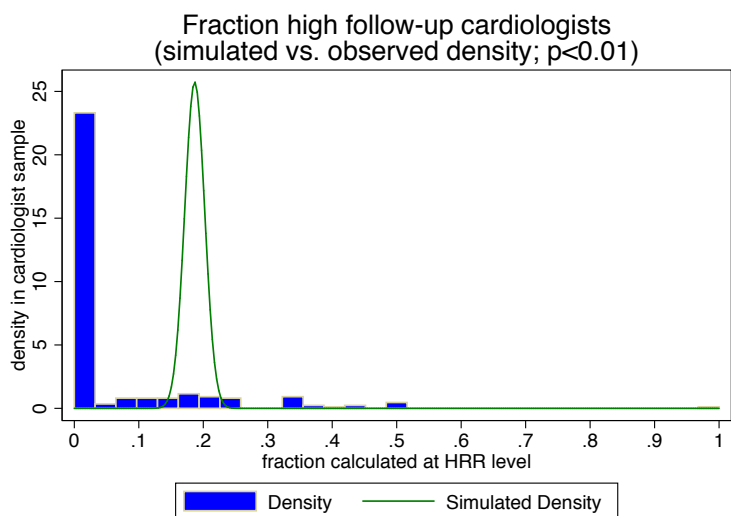
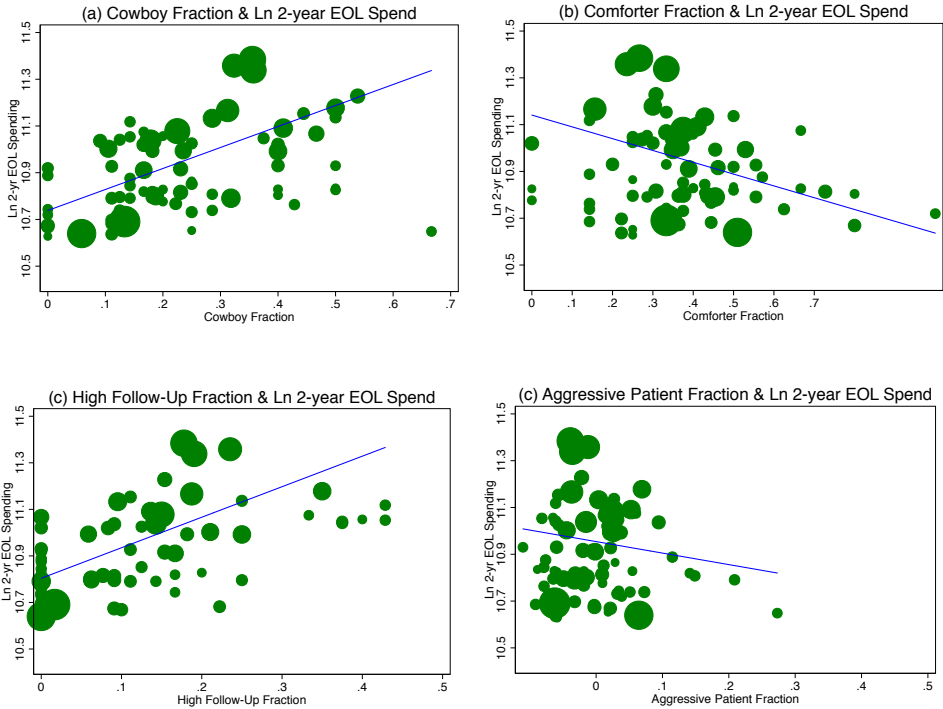


Figure 3b: Distribution of High Follow-Up Physicians and Geographic Correlation (Regional Averages for Cardiologists)



Notes: Figure 3a presents a HRR-level histogram of averages from the cardiology survey for the 74 HRRs in the main analysis sample. Figure 3b shows the distribution of high-follow-up cardiologists in this sample. A simulated distribution based on 1,000 bootstrap samples under the null hypothesis that individuals were randomly assigned to areas is superimposed on the observed distributions. P-values for over-dispersion are reported in Table 1 and indicate that the observed variation is significantly greater than can be explained by random variation.

Figure 4: Natural Log of 2-year End-of-Life (EOL) Spending vs. Selected Independent Variables



Notes: Figure 4 presents scatter plots of area-level end of life spending vs. measures of supply and demand for care. Measures included are: a) fraction of all physicians who are cowboys; b) fraction of physicians who are comforters; c) fraction of high follow-up physicians; and d) the share of patients who desire aggressive care at the end of life. Each circle represents one HRR, with size proportional to the size of the survey sample represented.

Table 1: Primary Variables and Sample Distribution

Variable	Mean	Individ. SD	Area Av. SD	P-value
Spending and Utilization				
2-Year End-of-Life Spending	\$55,194	-	\$10,634	-
Average EOL Spending	\$14,409	-	\$3,983	-
Hip Fracture Patient Spending	\$52,282	-	\$4,882	-
Patient Variables (N=1516)				
Have Unneeded Tests	73%	45%	11%	<0.01
See Unneeded Cardiologist	56%	50%	14%	<0.01
Aggressive Patient Preferences Ratio	8.0%	27%	7.0%	<0.01
Comfort Patient Preferences Ratio	48%	50%	13%	<0.01
Primary Care Physician Variables (N= 570 in restricted sample)				
Cowboy	23%	42%	27%	<0.01
Comforter	44%	50%	28%	<0.01
Follow-Up Low	8.8%	28%	19%	<0.01
Follow-Up High	4.4%	20%	6.4%	<0.01
Cardiologist variables (N=415 in restricted sample)				
Cowboy	26%	44%	20%	<0.01
Comforter	27%	45%	23%	<0.01
Follow-Up Low	1.4%	12%	6.3%	-
Follow-Up High	21%	41%	22%	<0.01
All Physicians (N=985 in restricted sample)				
Cowboy	24%	43%	15%	<0.01
Comforter	37%	48%	18%	<0.01
Follow-Up Low	5.7%	23%	8.6%	<0.01
Follow-Up High	12%	32%	12%	<0.01
Organizational and Financial Variables				
Reimbursement				
Fraction Medicare Patients	42%	22%	-	-
Fraction Medicaid Patients	10%	13%	-	-
Fraction Capitated Patients	15%	25%	-	-
Organizational Factors				
Solo or 2-person Practice	29%	46%	-	-
Single/Multi Speciality Group Practice	57%	50%	-	-
Group/Staff HMO or Hospital-Based Practice	13%	33%	-	-
General Controls				
Physician Age	53	10	-	-
Male	81%	39%	-	-
Board Certified	88%	33%	-	-
Weekly Patient Days	2.9	1.5	-	-
Cardiologists per 100k (N=74, HRR-level)	6.8	1.9	-	-
Responsiveness Factors				
Responds to Referrer Expectations (Cardiologists only)	31%	46%	-	-
Responds to Colleague Expectations	38%	49%	-	-
Responds to Patient Expectations	54%	50%	-	-
Responds to Malpractice Concerns	39%	49%	-	-
Responds to Practice Financial Incentives	9%	29%	-	-

Note: The table shows means for the (restricted) primary analysis sample. The p-value in the last column is for the null hypothesis of no excess variance across areas and is taken from a bootstrap of patient or physician responses across areas. For each of 1,000 simulations, we draw patients or providers randomly (with replacement) and calculate the simulated area average and the standard deviation of that area average. The empirical distribution of the standard deviation of the area average is used to form the p-value for the actual area average.

Table 2: Distribution of Physicians by Vignette Responses

Panel A: PCPs (N=570 in restricted sample)					
Follow-Up Frequency	Cowboy		Comforter		
	No	Yes	No	Yes	
Low	41	9	34	16	8.8%
Medium	387	108	270	225	88%
High	12	13	15	10	4.4%
	77%	23%	56%	44%	
$p(\chi^2)$:	<0.001		$p(\chi^2)$: 0.055		
			Comforter		
	Cowboy	No	Yes		
No		236	204	77%	
Yes		83	47	23%	
		56%	44%		
$p(\chi^2)$:	0.013				
Panel B: Cardiologists (N=415 in restricted sample)					
Follow-Up Frequency	Cowboy		Comforter		
	No	Yes	No	Yes	
Low	6	0	5	1	1.4%
Medium	240	80	228	92	77%
High	61	28	69	20	21%
	74%	26%	73%	27%	
$p(\chi^2)$:	<0.001		$p(\chi^2)$: <0.001		
			Comforter		
	Cowboy	No	Yes		
No		227	80	74%	
Yes		75	33	26%	
		73%	27%		
$p(\chi^2)$:	<0.001				

This table shows the bivariate relationships between the guideline-defined indicators for recommended follow-up frequency, as well as “Cowboy” and “Comforter” status among both PCPs and cardiologists in the (restricted) analysis sample. Chi-squared tests evaluate the null hypothesis that there is no association between pairs of indicators in the table.

Table 3: Regression Estimates of Medicare Expenditures

	Combined sample: PCPs and cardiologists						Overall (7)
	Medicare spending in last two years of life (columns 1-6)						
	(1)	(2)	(3)	(4)	(5)	(6)	
Cowboy physician share	0.822 (0.196)	0.676 (0.143)	0.675 (0.131)	0.684 (0.132)	0.685 (0.123)		0.904 (0.182)
Comforter physician share	-0.315 (0.144)	-0.200 (0.098)	-0.175 (0.098)	-0.161 (0.099)	-0.151 (0.096)		-0.274 (0.136)
High follow-up physician share		1.060 (0.176)	0.964 (0.172)	1.033 (0.165)	0.917 (0.166)		1.066 (0.215)
Low follow-up physician share		-0.307 (0.220)	-0.289 (0.217)	-0.402 (0.263)	-0.345 (0.239)		-0.673 (0.289)
Have unneeded tests patient share			0.297 (0.176)		0.351 (0.193)	0.500 (0.255)	0.421 (0.239)
See unneeded cardiologist patient share			0.150 (0.129)		0.132 (0.130)	0.543 (0.260)	-0.079 (0.151)
Aggressive patient preferences share				-0.427 (0.408)	-0.294 (0.379)	-0.021 (0.518)	-0.695 (0.404)
Comfort patient preferences share				-0.237 (0.137)	-0.282 (0.144)	-0.426 (0.217)	-0.639 (0.173)
N	74	74	74	74	74	74	74
R ²	0.356	0.619	0.644	0.634	0.662	0.203	0.623

2-year end-of-life spending (outcome in columns 1-6) and overall spending (outcome in column 7) are in natural log form and are price, age, sex, and race adjusted. Results shown are for the 74 Hospital Referral Regions (HRRs) with survey responses for at least 3 patients, 1 primary care physician, and 3 cardiologists. All regressions include a constant, control for the fraction of primary care physicians in the sample, and are robust to controlling for % black and % poverty at the HRR level. Survey sampling weights take into account differences in the number of physician observations per HRR.

Table 4: Regression Results for One-Year Medicare Spending and Quality: Acute Myocardial Infarction Patients, 2007-10

	(1)	(2)	(3)	(4)	(5)	(6)
	1-year Med. Expenditure	Ln 1-year Med Expenditure	1-year Med. Expenditure	Ln 1-year Med Expenditure	1-year survival	Fraction with Same-Day PCI
Cowboy physician share	7,644 (1,720)	0.142 (0.034)	10,870 (2,419)	0.196 (0.044)	0.006 (0.008)	0.016 (0.019)
Comforter physician share	-2,911 (1,137)	-0.050 (0.021)	-3,019 (1,350)	-0.046 (0.024)	0.009 (0.007)	-0.008 (0.016)
High follow-up physician share	16,560 (2,530)	0.270 (0.046)	22,310 (3,215)	0.360 (0.051)	-0.009 (0.013)	-0.063 (0.027)
Low follow-up physician share	-3,269 (2,855)	-0.084 (0.055)	-4,148 (3,463)	-0.115 (0.058)	0.015 (0.015)	0.089 (0.032)
HCC (2nd Quintile)	5,297 (195.4)	0.106 (0.003)	5,423 (251.6)	0.108 (0.004)	-0.044 (0.002)	-0.027 (0.002)
HCC (3rd Quintile)	8,535 (227.5)	0.176 (0.004)	9,098 (353.4)	0.187 (0.007)	-0.092 (0.002)	-0.053 (0.002)
HCC (4th Quintile)	11,660 (285.7)	0.242 (0.005)	12,180 (539.9)	0.252 (0.010)	-0.149 (0.003)	-0.084 (0.002)
HCC (Highest Quintile)	19,280 (506.7)	0.347 (0.008)	20,460 (934.3)	0.365 (0.015)	-0.258 (0.003)	-0.123 (0.003)
Black	4,823 (531.3)	0.052 (0.009)	4,543 (731.8)	0.046 (0.010)	-0.020 (0.003)	-0.039 (0.004)
Hispanic	4,921 (1,175)	0.079 (0.024)	4,770 (1,264)	0.080 (0.028)	0.016 (0.005)	-0.005 (0.005)
Asian	1,385 (1,141)	-0.010 (0.023)	858.5 (1,399.3)	-0.017 (0.026)	-0.005 (0.007)	-0.023 (0.011)
Income (2nd Quintile)	-233.9 (342.2)	-0.007 (0.006)	-405.1 (591.6)	-0.007 (0.009)	0.010 (0.002)	0.007 (0.004)
Income (3rd Quintile)	-286.0 (326.2)	-0.009 (0.006)	-455.5 (552.3)	-0.012 (0.008)	0.012 (0.002)	0.009 (0.004)
Income (4th Quintile)	160.0 (399.2)	-0.002 (0.008)	-363.8 (605.3)	-0.007 (0.011)	0.016 (0.002)	0.016 (0.005)
Income (Highest Quintile)	320.1 (500.8)	0.007 (0.009)	-678.7 (754.1)	-0.007 (0.013)	0.030 (0.003)	0.020 (0.006)
N	560,392	560,392	560,392	560,392	560,392	560,392
R ²	0.070	0.075	0.075	0.082	-	-

These results are based on a 100% sample of fee-for-service Medicare enrollees, 2007-10 with mortality follow-up through 2011. Columns 1 and 2 are unweighted and columns 3 and 4 are weighted by the number of physician respondents included in the sample. All results are for the 137 HRRs sample, with risk adjustment measures included but not reported for the following: age (65-69, 70-74, 75-79, 80-84, 85+), fully interacted with sex, vascular disease, pulmonary disease, dementia, diabetes, liver failure, renal failure, cancer, plegia (stroke), rheumatologic disease, HIV, and location of the AMI: Anterolateral, inferolateral, inferoposterior, all other inferior, true posterior walls, or subendocardial, other site, or not otherwise specified. All models include year fixed effects. Reported coefficients in columns 5 and 6 are marginal effects from Probit regressions.

Table 5: Predictors of Cowboy, comforter & high follow-up physician types

	(1)	(2)	(3)
	Cowboy physician	Comforter physician	High follow-up physician
General Controls			
Cardiologist dummy	0.005 (0.042)	-0.092 (0.048)	0.222 (0.029)
Age	0.003 (0.001)	0.000 (0.002)	0.004 (0.001)
Male	0.027 (0.037)	-0.072 (0.042)	-0.078 (0.025)
Weekly patient days	-0.011 (0.009)	0.024 (0.011)	0.008 (0.006)
Board certified	-0.033 (0.043)	-0.035 (0.049)	0.010 (0.030)
Reimbursement			
Fraction capitated patients	0.001 (0.001)	-0.000 (0.001)	0.000 (0.000)
Fraction Medicaid patients	0.004 (0.001)	0.001 (0.001)	0.001 (0.001)
Fraction Medicare patients	0.001 (0.001)	0.000 (0.001)	0.000 (0.000)
Organizational Factors			
(Baseline = Solo or 2-person Practice)	-	-	-
Single/multi speciality group practice	-0.101 (0.032)	-0.008 (0.037)	-0.164 (0.022)
Group/staff HMO or hospital-based practice	-0.171 (0.047)	0.038 (0.053)	-0.153 (0.032)
Responsiveness Factors			
Responds to patient expectations	-0.036 (0.036)	0.047 (0.041)	-0.007 (0.025)
Responds to colleague expectations	-0.015 (0.030)	-0.005 (0.035)	0.026 (0.021)
Responds to referrer expectations	0.061 (0.046)	-0.022 (0.053)	-0.033 (0.032)
Responds to malpractice concerns	0.041 (0.030)	0.045 (0.034)	0.006 (0.021)
N	978	978	978
R^2 (within)	0.048	0.046	0.150
R^2 (between)	0.075	0.009	0.117
R^2 (overall)	0.059	0.040	0.157
All logit regressions include a constant, HRR-level random effects, and general physician-level controls. Additional explanatory variables include financial, organizational and responsiveness factors. The question on responding to referring doctor expectations appeared in the cardiologist survey only, and therefore represents the preferences of cardiologists only; the cardiology dummy variable therefore reflects both the pure effect of being a practicing cardiologist, and a secondary adjustment arising from the referral question being set to zero for all primary care physicians. All results are robust to including a measure of capacity (cardiologists per 100k Medicare beneficiaries) among the explanatory variables.			

Appendix A: A Model of Variation in Utilization

We develop a simple model of patient demand and physician supply. The demand side of the model is a standard one; the patient's indirect utility function is a function of out-of-pocket prices (p), income (Y), health (h), and preferences for care (η); $V = V(p, Y, h, \eta)$. Solving this for optimal intensity of care, x , yields x^D .

On the supply side, we assume that physicians seek to maximize the perceived health of their patient, $s(x)$, by appropriate choice of inputs x , subject to patient demand (x^D), financial considerations, and organizational factors.

Following Chandra and Skinner (2012), we write the physician's overall utility as:

$$(A.1) \quad U = \Psi s(x) + \Omega(W + \pi x - R) - \phi(|x - x^D|) - \varphi(|x - x^O|)$$

where Ψ is perceived social value of improving health, Ω is the physician's utility function of own income, comprising her fixed payment W (a salary, for example) net of fixed costs R , and including the incremental "profits" from each additional test or procedure performed, π .³⁵ The sign of π depends on the type of procedure and the payment system faced by the physician.

The third term represents the loss in provider utility arising from the deviation between the quantity of services the provider actually recommends (x) and what the informed patient demands (x^D). This function could reflect classic supplier-induced demand – from the physician's point of view, x^D is too low relative to the physician's optimal x – or it may reflect the extent to which physicians are acting as the agent of the (possibly misinformed) patient, for example when the patient wants a procedure that the physician does not believe is medically appropriate. The fourth term reflects a parallel influence on physician

³⁵ We ignore capacity constraints, such as the supply of hospital or ICU beds.

decision-making exerted by organizational factors that do not directly affect financial rewards, such as (physician) peer pressure.

The first-order condition for (1) is:

$$(A.2) \quad \Psi s'(x) = -\Omega' \pi + \phi' + \varphi' \equiv \lambda$$

Physicians provide care up to the point where the choice of x reflects a balance between the perceived marginal value of health, $\Psi s'(x)$, and factors summarized by λ : (a) the incremental change in net income π , weighted by the importance of financial resources Ω' , (b) the incremental disutility from moving patient demand away from where it was originally, ϕ' , and (c) the incremental disutility from how much the physician's own choice of x deviates from her organization's perceived optimal level of intervention, φ' .

In this model,³⁶ there are two ways to define “supplier-induced demand.” The broadest definition is simply the presence of any equilibrium quantity of care beyond the level of the *ex-ante* preferences of an informed patient, i.e. $x > x^D$. This is still relatively benign, as the marginal value of this care may still be positive. Supplier-induced demand could more narrowly be defined as $s(x) - s(x^D) \leq 0$; for additional care provided at the margin, patients gain no improvement in health outcomes and may even experience a decline in health or a significant financial loss. Importantly, both of these definitions are ambiguous about the question of physician *knowledge* of inducement beyond clinically appropriate levels. That is, a physician with strong (but incorrect) beliefs may over-treat her patients, even in the absence of financial or organizational incentives to do so.

To develop an empirical model, we adopt a simple closed-form solution of the utility function for physician i :³⁷

³⁶ A more general model would account for the patient's ability to leave the physician and seek care from a different physician, as in McGuire (2011).

³⁷ We are grateful to Pascal St.-Amour for suggesting this approach.

$$(A.1') \quad U_i = \Psi s_i(x_i) + \omega[W_i + \pi_i x_i - R_i] - \frac{\phi}{2}(x_i - x_i^D)^2 - \frac{\varphi}{2}(x_i - x_i^O)^2$$

Note that ω/Ψ reflects the relative tradeoff between the physician's income and the value of improving patient lives, and thus might be viewed as a measure of "professionalism," as in Campbell, et al. (2010). The first-order condition is therefore:

$$(A.2') \quad s'_i(x_i) = \lambda \equiv (-\omega\pi_i + \phi(x_i - x_i^D) + \varphi(x - x_i^O))/\Psi$$

Note that λ is linear in x with an intercept equal to $-(\omega\pi_i + \phi x_i^D + \varphi x_i^O)/\Psi$. Note also the key assumption that patients are sorted in order from most appropriate to least appropriate for treatment, thus describing a downward sloping $s'(x)$ (marginal utility of treatment) curve. The equilibrium is where $s'(x) = \lambda$, at point A. A shift in the intercept, which depends on reimbursement rates for procedures π , taste for income ω , regional demand x^D , and organizational or peer effects x^O , would yield a different λ^* , and hence a different utilization rate. However, all of these factors affect the intensity of treatments via a movement *along* the marginal benefit curve, $s'(x)$.

Alternatively, it may be that $s'_i(x)$ differs across physicians – i.e. physician productivity differs, rather than physician constraints. For example, if $g'_i(x) = \alpha_i + s'(x)$, where $s'(x)$ is average physician productivity and α varies across regions, this would be represented as a shift in the marginal benefit curve. Point C in Figure 1 corresponds to greater intensity of care than point A and arises naturally when the physician is *or just believes* she is more productive. For example, heart attack patients experience better outcomes from cardiac interventions in regions with higher rates of revascularization, consistent with a Roy model of occupational sorting (Chandra and Staiger, 2007). Because patients in regions with high intervention rates benefit differentially from these interventions, this

scenario does not correspond to the narrow definition of “supplier-induced demand.”

The productivity shifter α_i may also vary because of “professional uncertainty” – a situation in which the physician’s perceived α_i differs from the true α_i (Wennberg, et al., 1982). Physicians may be overly optimistic with respect to their ability to perform procedures, leading to expected benefits that exceed actual realized benefits, as noted in the main text. For example, suppose the actual benefit is $s'(x)$ but the physician’s perceived benefit is $g'(x)$. The equilibrium is point D: the marginal treatment harms the patient, even though the physician believes the opposite, incorrectly believing they are at point C. In equilibrium, this supplier behavior would appear consistent with classic supplier-induced demand, but the cause is quite different.

Empirical Specification. To examine these theories empirically, we consider variation in practice at the regional level (for reasons explained below) but adjusting for health status, h . Taking a first-order Taylor-series approximation of equation (A.2') for region i yields a linear equation that groups equilibrium outcomes into two components, demand factors Z^D and supply factors Z^S :

$$(A.3) \quad x_i = \bar{x} + Z_i^D + Z_i^S + \varepsilon_i.$$

The demand-side component is:

$$(A.4) \quad Z_i^D = \frac{\phi}{M} (x_i^D - \bar{x}^D)$$

where $M = -\Psi s''(\bar{x}) + \phi + \varphi$. This first element of equation (5) reflects the higher average demand for health care, multiplied by the extent to which physicians accommodate that demand, ϕ . The supply side component is:

$$(A.5) \quad Z_i^S = \frac{1}{M} \{ \omega \Delta \pi_i + \pi \Delta \omega_i + \varphi (x_i^O - \bar{x}^O) + \Psi \Delta \alpha_i \}$$

The first term in equation (A.5) reflects how the difference in profits in region i vs. the national average ($\Delta \pi$) affects utilization. The second term reflects the

extent to which physicians weigh income more heavily. The third term captures organizational goals in region i relative to national averages ($x_i^0 - \bar{x}^0$). The final term captures the impact of different physician beliefs about productivity of the treatment ($\Delta\alpha_i$); this term shifts the marginal productivity curve.

Equation (A.3) can be expanded to capture varying parameter values as well. For example, in some regions, physicians may be more responsive to patient demand (a larger ϕ_i). Such interaction effects, would reflect the interaction of supply and demand and would magnify the responses here.

Appendix B: Survey Questions and Definitions

Clinical Vignettes and Response Options

Panel I: Patient Questions

SCENARIO 1- Questions relating to less-severe cardiac care preferences: *Suppose you noticed a mild but definite chest pain when walking up stairs....Suppose you went to your regular doctor for that chest pain and your doctor did not think you needed any special tests but you could have some tests if you wanted.*

a) *If the tests did not have any health risks, do you think you would probably have the tests or probably not have them?*

a - have tests

b - not have tests

b) *Suppose your doctor told you he or she did not think you needed to see a heart specialist, but you could see one if you wanted. Do you think you would probably ask to see a specialist, or probably not see a specialist?*

a - see specialist

b - not see specialist

SCENARIO 2 - Questions relating to end of life care preferences: *The next set of questions are about care a patient may receive during the last months of life. Remember, you can skip any question you don't want to answer. Suppose that you had a very serious illness. Imagine that no one knew exactly how long you would live, but your doctors said you almost certainly would live less than 1 year.*

a) *If you reached the point at which you were feeling bad all the time, would you want drugs that would make you feel better, even if they might shorten your life?*

a - yes: drugs

b - no

b1) *If you needed a respirator to stay alive, and it would extend your life for a week, would you want to be put on a respirator?*

b2) *If it would extend your life for a month, would you want to be put on a respirator?*

a - yes: respirator

b - no

Answers other than “yes” or “no” (e.g., “not concerned” or “I dont know”) are treated as missing data. Item non-response was less than 1% among eligible respondents.

Panel II: Physician Questions

In the next set of questions, you will be presented with brief clinical descriptions for three different patients. For each, you will be asked a series of questions regarding how you would be likely to treat that patient were he or she in your care.

PATIENT A - CARDIOLOGIST - *For this question, think about a patient with stable angina whose symptoms and cardiac risk factors are now well controlled on current medical therapy. In general, how frequently do you schedule routine follow-up visits for a patient like this?*

*Answer recorded in number of months

PATIENT A - PCPs: *In general, how frequently do you schedule routine follow-up visits for a patient with well-controlled hypertension?*

*Answer recorded in number of months

PATIENT B: *A 75 year old man with severe (Class IV) congestive heart failure from ischemic heart disease, is on maximal medications and has effective disease management counseling. His symptoms did not improve after recent angioplasty and stent placement and CABG is not an option. He is uncomfortable at rest. He is noted to have frequent, asymptomatic nonsustained VT on cardiac monitoring. He has adequate health insurance to cover tests and medications. At this point, for a patient presenting like this, how often would you arrange for each of the following?*

CARDIOLOGIST SURVEY

- a - Repeat angiography
- b - Initiate antiarrhythmic therapy
- c - Recommend an Implantable Cardiac Defibrillator (ICD)
- d - Recommend biventricular pacemaker for cardiac resynchronization
- e - Initiate or continue discussions about palliative care

POSSIBLE RESPONSES

- 1 Always/Almost always
- 2 Most of the time
- 3 Some of the time
- 4 Rarely
- 5 Never

PATIENT C: *An 85 year old male patient has severe (Class IV) congestive heart failure from ischemic heart disease, is on maximal medications, and is not a candidate for coronary revascularization. He is on 2 liters per minute of supplemental oxygen at home. He presents to your office with worsening shortness of breath and difficulty sleeping due to orthopnea. Office chest xray confirms severe congestive heart failure. Oxygen saturation was 85% and increased to 94% on 4 liters and the patient is more comfortable. He has adequate health insurance to cover tests and medications. At this point, for a patient presenting like this, how often would you arrange for each of the following?*

PCP and CARDIOLOGIST SURVEY

- a - Allow the patient to return home on increased oxygen and increased diuretics
- b - Admit to the hospital for aggressive diuresis (not to the ICU/CCU)
- c - Admit to the ICU/CCU for intensive therapy and monitoring
- d - Place a pulmonary artery catheter for hemodynamic optimization
- e - Recommend biventricular pacemaker for cardiac resynchronization
- f - Initiate or continue discussions about palliative care

POSSIBLE RESPONSES (both surveys)

- 1 Always/Almost always
 - 2 Most of the time
 - 3 Some of the time
 - 4 Rarely
 - 5 Never
-

Full Variable Definitions

Panel I: Patient variables:

Have unneeded tests patient share	Fraction of patients who would like to have tests even if “doctor did not think [they were] needed”
See unneeded cardiologist patient share	Fraction of patients who would like to see a specialist even if doctor “did not think [patient] needed to”
Aggressive patient preferences share	Fraction of patients who would like to be on a respirator to extend their life by 1 week or 1 month
Comfort patient preferences share	Fraction of patients who would like to take drugs to be comfortable, “even if they might shorten [their] life”

Panel II: Physician (cardiologist & PCP) variables:

Cowboy physician (share)	(Fraction of) cowboys among the local (HRR-level) physician population surveyed
Comforter physician (share)	(Fraction of) comforters among the local (HRR-level) physician population surveyed
Low follow-up physician (share)	(Fraction of) physicians (HRR-level) who recommend follow-up less frequently than medical guidelines suggest
High follow-up physician (share)	(Fraction of) physicians (HRR-level) who recommend follow-up more frequently than medical guidelines suggest
Responds to patient expectations	Physician at least “sometimes” intervenes when “patient expected to undergo the procedure”
Responds to colleague expectations	Physician at least “sometimes” intervenes when “colleagues would do so in the same situation”
Responds to referrer expectations	Physician at least “sometimes” intervenes “to satisfy the expectations of the referring physician”
Responds to malpractice concerns	Physician at least “sometimes” intervenes “to protect against a possible malpractice suit”

Panel III: Other variables (all physicians):

Practice Type 1	Physician is part of a solo or 2-person practice
Practice Type 2	Physician is part of a single or multi speciality group practice
Practice Type 3	Physician is part of a group or staff model HMO or a Hospital based practice
Fraction capitated patients	Fraction of patients for which physician is reimbursed on a capitated basis
Fraction Medicaid patients	Fraction of patients a physician sees who are on Medicaid
Fraction Medicare patients	Fraction of patients a physician sees who are covered by Medicare
Weekly patients days	Number of days per week a physician spends seeing patients
Age	Physician’s age in years
Board certified	Physician is currently board certified in her speciality
Cardiologists per 100k	Cardiologists per 100,000 Medicare beneficiaries in HRR of practice as reported in the 2005 Dartmouth Atlas

Notes: detailed explanations of the algorithm used to define “Cowboys” (physicians aggressive beyond clinical guidelines) and “Comforters” (physicians who show a strong likelihood of recommending palliative and comfort-oriented care) are described in the paper. The indicator for “Aggressive Patient Preferences” combines two questions: affirmative responses to both part b1 and b2 of Patient Scenario 2 (see Appendix A above for original survey text)

Appendix C: Further Results

Appendix Table C1: Regression Estimates of Medicare Expenditures
(Cardiologists Only)

	Cardiologists						Overall (7)
	Medicare spending in last two years of life (columns 1-6)						
	(1)	(2)	(3)	(4)	(5)	(6)	
Cowboy physician share	0.477 (0.132)	0.415 (0.125)	0.337 (0.119)	0.443 (0.122)	0.365 (0.114)		0.483 (0.168)
Comforter physician share	-0.215 (0.102)	-0.221 (0.088)	-0.190 (0.081)	-0.174 (0.082)	-0.150 (0.075)		-0.191 (0.124)
High follow-up physician share		0.800 (0.470)	0.820 (0.444)	0.795 (0.450)	0.789 (0.417)		0.719 (0.580)
Low follow-up physician share		-0.342 (0.142)	-0.315 (0.140)	-0.398 (0.152)	-0.355 (0.136)		-0.611 (0.196)
Have unneeded tests patient share			0.227 (0.228)		0.283 (0.225)	0.514 (0.263)	0.326 (0.273)
See unneeded cardiologist patient share			0.409 (0.177)		0.374 (0.168)	0.539 (0.262)	0.255 (0.189)
Aggressive patient preferences share				-0.615 (0.426)	-0.490 (0.400)	-0.012 (0.503)	-0.976 (0.465)
Comfort patient preferences share				-0.360 (0.191)	-0.368 (0.190)	-0.383 (0.222)	-0.723 (0.247)
N	74	74	74	74	74	74	74
R ²	0.251	0.358	0.422	0.394	0.456	0.199	0.397

2-year end-of-life spending (outcome in columns 1-6) and overall spending (outcome in column 7) are in natural log form and are price, age, sex, and race adjusted. Results shown are for the 74 Hospital Referral Regions (HRRs) with survey responses for at least 3 patients, 1 primary care physician, and 3 cardiologists. All regressions include a constant and control for the fraction of primary care physicians in the sample. Survey sampling weights take into account differences in the number of physician observations per HRR.

Appendix Table C2: Regression Estimates of Medicare Expenditures
(PCPs Only)

	PCPs						Overall (7)
	Medicare spending in last two years of life (columns 1-6)						
	(1)	(2)	(3)	(4)	(5)	(6)	
Cowboy physician share	0.276 (0.180)	0.235 (0.100)	0.278 (0.099)	0.231 (0.098)	0.291 (0.095)		0.521 (0.155)
Comforter physician share	0.035 (0.157)	0.082 (0.112)	0.108 (0.109)	0.046 (0.092)	0.062 (0.088)		-0.047 (0.114)
High follow-up physician share		0.751 (0.112)	0.689 (0.107)	0.738 (0.108)	0.661 (0.100)		0.840 (0.148)
Low follow-up physician share		-0.345 (0.224)	-0.253 (0.276)	-0.366 (0.195)	-0.329 (0.218)		0.026 (0.253)
Have unneeded tests patient share			0.233 (0.207)		0.381 (0.188)	0.514 (0.263)	0.471 (0.250)
See unneeded cardiologist patient share			0.168 (0.177)		0.110 (0.171)	0.539 (0.262)	-0.024 (0.217)
Aggressive patient preferences share				0.065 (0.340)	0.167 (0.336)	-0.012 (0.503)	0.079 (0.381)
Comfort patient preferences share				-0.185 (0.172)	-0.237 (0.167)	-0.383 (0.222)	-0.562 (0.201)
N	74	74	74	74	74	74	74
R ²	0.047	0.553	0.571	0.565	0.591	0.199	0.553

2-year end-of-life spending (outcome in columns 1-6) and overall Medicare spending (outcome in column 7) are in natural log form and are price, age, sex, and race adjusted. Results shown are for the 74 Hospital Referral Regions (HRRs) with survey responses for at least 3 patients, 1 primary care physician, and 3 cardiologists. All regressions include a constant and control for the fraction of primary care physicians in the sample. Survey sampling weights take into account differences in the number of physician observations per HRR.

Appendix Table C3: Regression Estimates of Medicare Expenditures
(Age, Sex, and Race-Adjusted Physician and Patient Survey Data)

Combined sample: PCPs and cardiologists							
	Medicare spending in last two years of life (columns 1-6)					Overall	
	(1)	(2)	(3)	(4)	(5)	(6)	(7)
Cowboy physician share (adj)	0.726 (0.200)	0.682 (0.158)	0.718 (0.150)	0.681 (0.147)	0.717 (0.142)		0.933 (0.204)
Comforter physician share (adj)	-0.338 (0.146)	-0.207 (0.105)	-0.208 (0.111)	-0.167 (0.103)	-0.167 (0.106)		-0.310 (0.154)
High follow-up physician share (adj)		1.150 (0.220)	1.105 (0.217)	1.131 (0.209)	1.080 (0.204)		1.277 (0.262)
Low follow-up physician share (adj)		-0.442 (0.260)	-0.411 (0.264)	-0.572 (0.307)	-0.530 (0.297)		-0.919 (0.394)
Have unneeded tests patient share (adj)			0.272 (0.187)		0.279 (0.201)	0.078 (0.302)	0.392 (0.230)
See unneeded cardiologist patient share (adj)			0.053 (0.164)		0.075 (0.162)	0.493 (0.257)	-0.141 (0.199)
Aggressive patient preferences share (adj)				-0.456 (0.424)	-0.423 (0.416)	-0.477 (0.633)	-0.811 (0.496)
Comfort patient preferences share (adj)				-0.133 (0.156)	-0.193 (0.182)	-0.228 (0.214)	-0.517 (0.199)
N	74	74	74	74	74	74	74
R ²	0.284	0.573	0.588	0.584	0.600	0.083	0.578

2-year end-of-life spending (outcome in columns 1-6) and overall medicare spending (outcome in column 7) are in natural log form and are price, age, sex, and race adjusted. Results shown are for the 74 Hospital Referral Regions (HRRs) with survey responses for at least 3 patients, 1 primary care physician, and 3 cardiologists. All regressions include a constant and control for the fraction of primary care physicians in the sample. All respondent data adjusted for age, sex, race/ethnicity. Survey sampling weights take into account differences in the number of physician observations per HRR.

Appendix Table C4: Regression Estimates of Medicare Expenditures
(Age, Sex, and Race-Adjusted Physician Survey Data)

Combined sample: PCPs and cardiologists							
	Medicare spending in last two years of life (columns 1-6)					Overall	
	(1)	(2)	(3)	(4)	(5)	(6)	(7)
Cowboy physician share (adj)	0.726 (0.200)	0.682 (0.158)	0.695 (0.145)	0.688 (0.146)	0.704 (0.138)		0.927 (0.204)
Comforter physician share (adj)	-0.338 (0.146)	-0.207 (0.105)	-0.192 (0.107)	-0.169 (0.103)	-0.174 (0.100)		-0.315 (0.152)
High follow-up physician share (adj)		1.150 (0.220)	1.030 (0.210)	1.121 (0.206)	0.974 (0.197)		1.167 (0.253)
Low follow-up physician share (adj)		-0.442 (0.260)	-0.417 (0.261)	-0.535 (0.299)	-0.455 (0.278)		-0.805 (0.349)
Have unneeded tests patient share			0.382 (0.183)		0.452 (0.196)	0.500 (0.255)	0.550 (0.245)
See unneeded cardiologist patient share			0.123 (0.148)		0.102 (0.145)	0.543 (0.260)	-0.125 (0.181)
Aggressive patient preferences share				-0.404 (0.445)	-0.225 (0.414)	-0.021 (0.518)	-0.592 (0.448)
Comfort patient preferences share				-0.236 (0.158)	-0.294 (0.168)	-0.426 (0.217)	-0.649 (0.201)
N	74	74	74	74	74	74	74
R ²	0.284	0.573	0.606	0.587	0.624	0.203	0.597

2-year end-of-life spending (outcome in columns 1-6) and overall medicare spending (outcome in column 7) are in natural log form and are price, age, sex, and race adjusted. Results shown are for the 74 Hospital Referral Regions (HRRs) with survey responses for at least 3 patients, 1 primary care physician, and 3 cardiologists. All regressions include a constant and control for the fraction of primary care physicians in the sample. Physician survey data adjusted for age, sex, race/ethnicity. Survey sampling weights take into account differences in the number of physician observations per HRR.

Appendix Table C5: Expanded Regression Estimates of Medicare Expenditures

Combined Sample: Cardiologists and PCPs				
	(1)	(2)	(3)	(4)
Cowboy physician share	0.887 (0.201)	0.810 (0.182)	0.942 (0.224)	0.854 (0.184)
Comforter physician share	-0.311 (0.162)	-0.325 (0.170)	-0.301 (0.167)	-0.326 (0.172)
High follow-up physician share	1.272 (0.238)	1.140 (0.252)	1.309 (0.230)	1.172 (0.252)
Low follow-up physician share	-0.556 (0.290)	-0.429 (0.229)	-0.575 (0.290)	-0.450 (0.234)
Fraction capitated patients		0.001 (0.003)		0.001 (0.003)
Fraction Medicaid patients		-0.003 (0.010)		-0.003 (0.009)
Single/multi speciality group practice		-0.185 (0.226)		-0.183 (0.232)
Group/staff HMO or hospital-based practice		0.439 (0.218)		0.400 (0.212)
Responds to patient expectations			0.212 (0.209)	0.158 (0.189)
Responds to colleague expectations			-0.062 (0.180)	-0.011 (0.175)
Responds to referrer expectations			-0.005 (0.180)	0.004 (0.170)
Responds to malpractice concerns			-0.209 (0.171)	-0.126 (0.159)
N	74	74	74	74
R ²	0.555	0.597	0.565	0.601

2-year end-of-life spending (outcome in columns 1-6) and overall medicare spending (outcome in column 7) are in natural log form and are price, age, sex, and race adjusted. Results shown are for the 74 Hospital Referral Regions (HRRs) with survey responses for at least 3 patients, 1 primary care physician, and 3 cardiologists. All regressions include a constant and control for the fraction of primary care physicians in the sample. Survey sampling weights take into account differences in the number of physician observations per HRR.

Appendix Table C6: Regression Estimates of Medicare Expenditures with Interaction Terms and Additional Measures of Spending

	Combined Sample of PCPs and Cardiologists (dependent variables listed in column headings; all in natural logs)				
	(1)	(2)	(3)	(4)	(5)
	2-yr end-of-life spending (as in Table 3, col. 5)	2-yr end-of-life spending	2-yr end-of-life spending	Total spend (average per beneficiary)	Total spend (hip fracture cohort)
Cowboy physician share	0.685 (0.123)	0.903 (0.445)	0.688 (0.118)	0.904 (0.182)	0.292 (0.084)
Comforter physician share	-0.151 (0.096)	-0.142 (0.091)	0.502 (0.297)	-0.274 (0.136)	-0.051 (0.067)
High follow-up physician share	0.917 (0.166)	0.999 (0.155)	0.894 (0.164)	1.066 (0.215)	0.322 (0.108)
Low follow-up physician share	-0.345 (0.239)	-0.259 (0.215)	-0.350 (0.213)	-0.673 (0.289)	-0.109 (0.152)
Have unneeded tests patient share	0.351 (0.193)	0.254 (0.195)	0.394 (0.184)	0.421 (0.239)	0.047 (0.131)
See unneeded cardiologist patient share	0.132 (0.130)	0.116 (0.125)	0.120 (0.123)	-0.079 (0.151)	0.171 (0.109)
Aggressive patient preferences share	-0.294 (0.379)	0.627 (0.496)	1.340 (0.713)	-0.695 (0.404)	-0.057 (0.250)
Comfort patient preferences share	-0.282 (0.144)	-0.275 (0.208)	-0.072 (0.233)	-0.639 (0.173)	-0.094 (0.104)
Cowboy share * aggressive patient preferences share		-3.259 (1.162)			
Cowboy share * comfort patient preferences share		0.188 (0.697)			
Comforter share * aggressive patient preferences share			-4.461 (1.669)		
Comforter share * comfort patient preferences share			-0.592 (0.513)		
N	74	74	74	74	74
R ²	0.662	0.688	0.680	0.623	0.431

2-year end-of-life spending and overall spending are in natural log form and are price, age, sex, and race adjusted. Hip fracture cohort spending is adjusted for age, sex, race, comorbid conditions at admission, and the hierarchical condition categories risk-adjustment index for the six months prior to admission. Results shown are for the 74 Hospital Referral Regions (HRRs) with survey responses for at least 3 patients, 1 primary care physician, and 3 cardiologists. All regressions include a constant and control for the fraction of primary care physicians in the sample. Survey sampling weights take into account differences in the number of physician observations per HRR.

Appendix Table C7: Summary Statistics for Additional AMI Data in Table 4

(137 HRRs, N = 603,457)			
	Mean	Median	Standard Deviation
1-Year Medicare Expenditures	45,827	32,859	42,208
Median ZIP Household Income	56,251	50,623	22,497
Log 1-Year Medicare Expenditures	10.41	10.40	0.80
1-Year Survival	0.68	1.00	0.47
Same Day PCI (stent)	0.26	0.00	0.44
Age	78.85	79.00	8.28
Fraction Black	0.08	0.00	0.26
Fraction Hispanic	0.02	0.00	0.13
Fraction Asian	0.01	0.00	0.12
Fraction Female	0.50	1.00	0.50
Average HCC	1.73	1.31	1.35
Vascular Disease	0.08	0.00	0.27
Pulmonary Disease	0.17	0.00	0.38
Dementia	0.03	0.00	0.18
Renal Disease	0.18	0.00	0.38
Cancer (non-metastatic)	0.05	0.00	0.22
Cancer (metastatic)	0.01	0.00	0.11
Congestive Heart Failure	0.40	0.00	0.49
AIDS	0.00	0.00	0.02
Plegia (stroke)	0.00	0.00	0.05
Liver disease	0.00	0.00	0.06
Diabetes	0.26	0.00	0.44
Rheumatologic Disease	0.01	0.00	0.10
Peripheral Vascular Disease	0.02	0.00	0.12
AMI Location: Anterolateral	0.02	0.00	0.14
Anterior wall	0.07	0.00	0.26
Inferolateral	0.02	0.00	0.13
Inferoposterior	0.01	0.00	0.11
All other inferior	0.09	0.00	0.28

Appendix Table C8: Regression Estimates of Medicare Expenditures with Additional Survey Data

Combined Sample of PCPs and Cardiologists (dependent variable = 2-year end-of-life spending)				
	(1)	(2)	(3)	(4)
Cowboy physician share	0.854 (0.188)	0.800 (0.175)	0.913 (0.212)	0.848 (0.177)
Comforter physician share	-0.326 (0.159)	-0.335 (0.164)	-0.315 (0.162)	-0.336 (0.164)
High follow-up physician share	1.239 (0.234)	1.138 (0.254)	1.275 (0.225)	1.173 (0.254)
Low follow-up physician share	-0.533 (0.270)	-0.405 (0.215)	-0.554 (0.267)	-0.430 (0.220)
Fraction capitated patients		0.001 (0.003)		0.000 (0.003)
Fraction Medicaid patients		-0.003 (0.010)		-0.003 (0.010)
Single/multi speciality group practice		-0.156 (0.231)		-0.152 (0.238)
Group/staff HMO or hospital-based practice		0.466 (0.215)		0.424 (0.208)
Responds to patient expectations			0.211 (0.203)	0.162 (0.186)
Responds to colleague expectations			-0.060 (0.174)	-0.018 (0.171)
Responds to referrer expectations			-0.001 (0.179)	0.014 (0.170)
Responds to malpractice concerns			-0.233 (0.171)	-0.152 (0.157)
N	74	74	74	74
R ²	0.564	0.606	0.576	0.611

2-year end-of-life spending is reported in natural log form and is price, age, sex, and race adjusted. Results shown are for the 74 Hospital Referral Regions (HRRs) with survey responses for at least 3 patients, 1 primary care physician, and 3 cardiologists. All regressions include a constant and control for the fraction of primary care physicians in the sample. Survey sampling weights take into account differences in the number of physician observations per HRR.