



HARVARD | BUSINESS | SCHOOL

Social Enterprise Initiative

this is Social Enterprise...



No part of this publication may be reproduced, stored in or introduced into a retrieval system, or transmitted, in any form, or by any means (electronic, mechanical, photocopying, recording, or otherwise), without the prior permission of the publisher. Requests for permission should be directed to se@hbs.edu, or mailed to Harvard Business School, Social Enterprise Initiative, Loeb 31, Soldiers Field Road, Boston, MA 02163.



Social Enterprise Kick-Off

Who is in the room?



What is the Social Enterprise Initiative?

Grounded in HBS's mission to educate leaders who make a difference in the world...

The Social Enterprise Initiative aims to **develop knowledge** and to **inspire, educate, and support** current and emerging leaders **across all sectors** in applying management skills to create social value.



What is social enterprise?

- **Social Enterprise ≠ an industry**
 - It is comprised of many industries
- **Social Enterprise blurs sector boundaries**
 - For-profit entities in which social purpose is an integral component
 - Public-sector agencies
 - Nonprofit organizations
 - Cross-sector collaborations
- **Social Enterprise = mission-driven organizations or activities—those with an explicit focus on social impact**



Social Enterprise at HBS

The Social Enterprise Initiative...

- Takes an integrated approach to social-enterprise related **teaching, research, and activities**
- Engages with leaders **in all sectors**
- Generates and disseminates practicable **resources, tools, and knowledge**

...with the ultimate goal of bettering society.



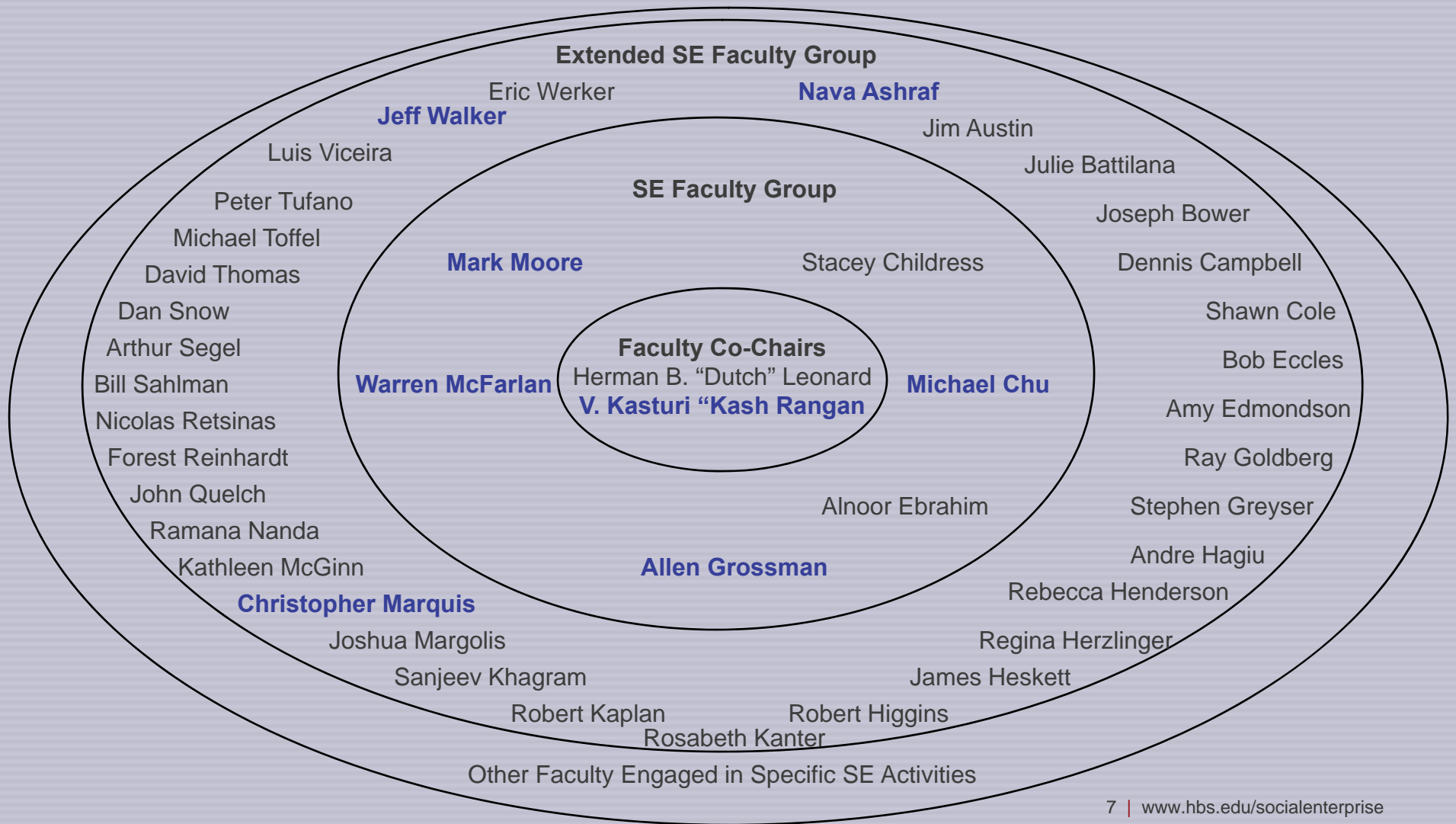
SEI Areas of Focus

The Social Enterprise Initiative operates across five major arenas:

- Faculty Research Agenda
- SE in the MBA Curriculum
- Portfolio of SE Executive Education Programs
- MBA Engagement, Educational, and Career Choice Programs
- Alumni Engagement and Networking

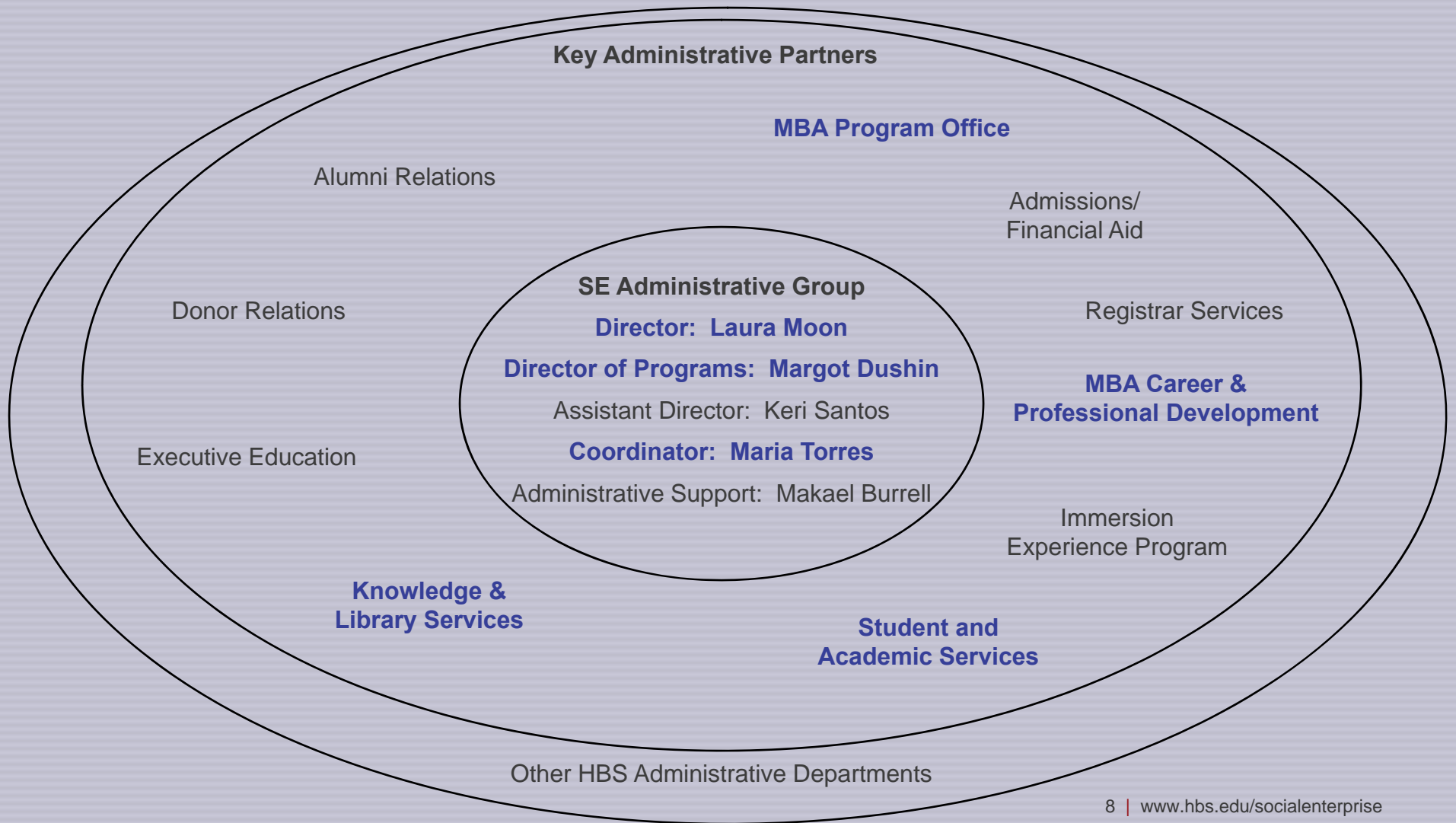


Faculty Engagement in Social Enterprise





Administrative Engagement in Social Enterprise





A Ten-Year View of Social Enterprise at HBS

	1998-99	2008-09
% of class entering from the social sector (for class entering)	4.4%	9.0%
Social Enterprise Club Membership	100	375
Course enrollment (in “core” SE courses)	183	546
SE Summer Fellowships	33	125
SE Business Plan Contest (# of Teams)	—	32
First Job Out in SE	16	35
Social Enterprise Alumni Association	—	>800
Exed Ed Participants (Open Enrollment)	~200	>325



Your Engagement in Social Enterprise

FIRST YEAR	SUMMER	SECOND YEAR	POST-GRAD
<p><u>Required Curriculum</u></p> <ul style="list-style-type: none"> Leadership and Corporate Accountability Cases in other courses <p><u>Programs and Activities</u></p> <ul style="list-style-type: none"> Student Clubs January Term Immersions, Intensive Studies, Independent Projects Social VentureTrack of Business Plan Contest <p><u>Careers</u></p> <ul style="list-style-type: none"> Coaching Industry Week Other presentations, speakers, and recruiters 	<p><u>Careers</u></p> <ul style="list-style-type: none"> Social Enterprise summer associate positions and funding via the Social Enterprise Summer Fellowship Program 	<p><u>Elective Curriculum</u></p> <ul style="list-style-type: none"> SE focused and related course Field based learning and funding via the Social Enterprise Field Study Grant program <p><u>Programs and Activities</u></p> <ul style="list-style-type: none"> Student Clubs January Term Immersions, Intensive Studies, Independent Projects Social Venture Track of Business Plan Contest <p><u>Careers</u></p> <ul style="list-style-type: none"> Coaching Industry Week Other presentations, speakers, and recruiters 	<p><u>Programs and Activities</u></p> <ul style="list-style-type: none"> HBS Social Enterprise Alumni Association Local alumni clubs: events, pro bono consulting programs, etc. Reunion activities <p><u>Careers</u></p> <ul style="list-style-type: none"> HBS Leadership Fellows HBS Nonprofit/Public Sector Loan Repayment Assistance Program Other HBS loan support programs for graduating students



MBA Engagement, Educational, and Career Choice Programs

SE Career Map

	RC Year		Summer	EC Year		Post HBS		
Nonprofit Sector	Goldsmith Fellowship	J-Term/IXPs	SE Summer Fellowship	SE Field Study Grant	J-Term/IXPs	Leadership Fellows	Loan Assistance	
Public Sector		J-Term/IXPs	SE Summer Fellowship	SE Field Study Grant	J-Term/IXPs	Leadership Fellows	Loan Assistance	
Social Entrepreneurship	Social Venture BPlan Contest	J-Term/IXPs	SE Summer Fellowship	Social Venture BPlan Contest	SE Field Study Grant	J-Term/IXPs	Social Entrepreneurship Fellowship	Loan assistance or support programs
Social Impact within the Private Sector		J-Term/IXPs	SE Summer Fellowship		SE Field Study Grant	J-Term/IXPs		Loan support programs for graduating students



Information Resources and Staying Connected

1. The Social Enterprise Gateway

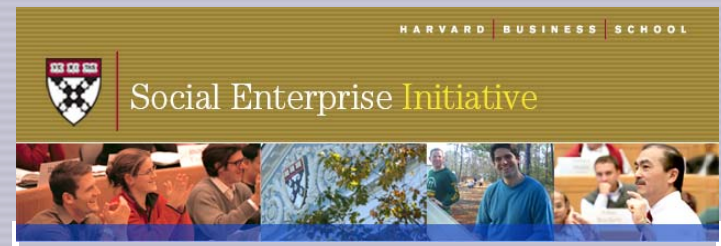
- www.hbs.edu/socialenterprise

2. Periodic Email Announcements from the Social Enterprise Initiative

3. Mainstream HBS Communications

- Events Calendar
- MyHBS

4. Student Clubs



The HBS Social Enterprise Initiative
Upcoming Events and Deadlines.

Welcome to the Class of 2011 and welcome back to the Class of 2010! We are excited to have you on campus and to share with you upcoming events in Social Enterprise.

Social Enterprise Initiative Kick-off | Thursday, September 10

RC students: Join the Social Enterprise Initiative and student-club representatives and meet fellow classmates, for an overview of social enterprise related opportunities and resources.

>3:00 – 4:00 pm, Presentation, Hawes 201

>4:00 – 5:00 pm, Information Fair, Hawes 1st floor

Immersion Experience Program (IXP): New Orleans Information Session | September 17

Student leaders and Professor Dutch Leonard will give a presentation on the New Orleans IXP titled, "New Orleans:



Student Club Leaders

Social Enterprise Club

- Board Fellows
- Social Enterprise Conference

Business, Industry, and Government Club

Global Business Club (formerly International Business and Development Club)

Greentech and Sustainability Club

Harbus Foundation

Healthcare Club

Volunteer Consulting Organization

Volunteers

New Orleans Immersion



The Next Month and Beyond

- **Immersion Experience Program Launch: September 11**
- **New Orleans Immersion Info Session: September 17**
- **Rwanda Immersion Info Session: September 21**
- **Club Fair: September 21 and 22**
- **Social Enterprise Industry Week: September 28 – October 1**
 - Overarching sessions
 - Industry-specific alumni dialogues
- **Social Enterprise Community Engagement Sessions**
 - Monthly small group lunches in October, November, and December



Information Fair

- **Hawes 101: Beyond HBS**
 - Center for Public Leadership
 - CSR Initiative
 - Hauser Center for Nonprofit Organizations

- **Hawes 102: Social Enterprise Club**
 - Social Enterprise Club
 - Board Fellows program
 - Social Enterprise Conference

- **Hawes 1st Floor Lobby: Related Clubs and Activities**
 - Business, Industry, and Government Club
 - Global Business Club (formerly International Business and Development Club)
 - Greentech and Sustainability Club
 - Harbus Foundation
 - Healthcare Club
 - Volunteer Consulting Organization
 - Volunteers
 - New Orleans Immersion
 - Social Enterprise Initiative