

07-086

# **Plant-Size Distribution and Cross-Country Income Differences**

**Laura Alfaro  
Andrew Charlton  
Fabio Kanczuk**

Copyright © 2007, 2008 by Laura Alfaro, Andrew Charlton, and Fabio Kanczuk

Working papers are in draft form. This working paper is distributed for purposes of comment and discussion only. It may not be reproduced without permission of the copyright holder. Copies of working papers are available from the author.

# Plant-Size Distribution and Cross-Country Income Differences

**Laura Alfaro**  
Harvard Business School &  
NBER

**Andrew Charlton**  
London School of Economics

**Fabio Kanczuk**  
Universidade de São Paulo

July 2008

*Abstract*

We investigate, using plant-level data for 79 developed and developing countries, whether differences in the allocation of resources across heterogeneous plants are a significant determinant of cross-country differences in income per worker. For this purpose, we use a standard version of the neoclassical growth model augmented to incorporate monopolistic competition among heterogeneous plants. For our preferred calibration, the model explains 58% of the log variance of income per worker. This figure should be compared to the 42% success rate of the usual model.

JEL classification: O1.

Key words: heterogeneous plants, productivity, policy distortions

---

\* Laura Alfaro, Harvard Business School, Morgan 263, Boston MA, 02163, U.S. (e-mail: [lalfaro@hbs.edu](mailto:lalfaro@hbs.edu)). Andrew Charlton, London School of Economics, Houghton Street London, WC2A 2AE, U.K. (e-mail: [a.charlton@lse.ac.uk](mailto:a.charlton@lse.ac.uk)). Fabio Kanczuk, Department of Economics, Universidade de São Paulo, Brazil, (e-mail: [kanczuk@usp.br](mailto:kanczuk@usp.br)). We thank Daron Acemoglu, Jeff Frankel, John Haltiwanger, Chang-Tai Hsieh, Pete Klenow, Julio Rotemberg, Kei-Mu Yi, and participants at the NBER Economic Fluctuations and Growth Meeting and NBER International Seminar on Macroeconomics (ISOM) for valuable comments and suggestions. We are grateful to Dennis Jacques for helping us with the D&B dataset, and HBS and LSE for financial support. We further thank Pamela Arellano for excellent research assistance.

## 1 Introduction

Cross-country differences in income per worker are widely known to be enormous. Per capita income in the richest countries exceeds that in the poorest countries by more than a factor of fifty.<sup>1</sup> An important strand of the literature trying to understand cross-country differences in per capita incomes has focused on the role of aggregate factor accumulation by abstracting from heterogeneity in the production units.<sup>2</sup> But there is an emerging and growing body of research that takes a different approach, focusing instead on the misallocation of resources across plants (Restuccia and Rogerson 2007, Hsieh and Klenow 2007, and Bartelsman, Haltiwanger, and Scarpetta 2006). Policies' and institutions' differential effects on the business climate broadly defined might significantly influence the allocation of resources across establishments. The working hypothesis in this literature is that not only the level of factor accumulation, but also how these factors are allocated across heterogeneous production units, matters in trying to understand income differences.

Our paper contributes to this literature by performing a development accounting exercise using a new dataset of more than 20 million establishments in 79 developing and industrialized countries. Specifically, we develop a simple model of heterogeneous production units that follows Melitz (2003).<sup>3</sup> Plants' dynamics and policy distortions are as in Restuccia and Rogerson (2007), but we assume that production units have constant returns to scale technologies and some degree of market power, as in Hsieh and Klenow (2007). We calibrate the model to match our dataset. Our calibration exercise consists in finding the profile of output taxes and subsidies needed to match each country's plant-size distribution.

---

<sup>1</sup> See Caselli (2005), Hall and Jones (1999), Klenow and Rodriguez-Clare (1997), and Prescott (1998).

<sup>2</sup> The consensus view in the development accounting literature is that two-thirds of these differences can be attributed to differences in efficiency or total factor productivity. Researchers have consequently attempted to explain why some countries are able to use their factors of production more efficiently and extract more output from them than others. In other words, the challenge of the growth literature is to reduce the role of measured productivity in explaining cross-country income. The traditional approach to tackling this puzzling question has been to explore the slow diffusion of technology from rich to poor countries (see Howitt, 2000; Keller, 2004; and Parente and Prescott, 1994).

<sup>3</sup> The model implies a direct relation between productivity and size, and the model's size distribution relates to that of Lucas (1978). See Bartelsman, Haltiwanger, and Scarpetta (2006) for a discussion of the limitations of this class of models, and Sutton (1997) for a general discussion of firm size distribution.

These distortions should be interpreted as the different types of policies that might generate these effects such as non-competitive banking systems, product and labor market regulations, corruption, and trade restrictions. For example, specific producers might be offered, by governments, special tax deals and contracts financed by taxes on other production activities, and by non-competitive banking systems, favorable interest rates on loans based on non-economic factors, leading to misallocation of credit across establishments. Corruption and trade restrictions might also result in less productive firms obtaining a larger share of the market.

In practice, our calibration exercise amounts to making each artificial economy's plant-size distribution match the observed plant-size distribution for each country. Taking the United States as a supposedly undistorted benchmark economy, we find the distribution of plant-specific productivities needed to generate its plant-size histogram.<sup>4</sup> We then find, for each country, the plant-size specific distortions needed to match its plant-size histogram, assuming it faces the same distribution of productivity as the U.S. economy. This enables us to calculate how much aggregate output is being wasted due to misallocation attributable to distortions.

To make them directly comparable, our results are reported using the same framework as Caselli (2005). We measure the success of our model by computing cross-country income dispersion under the assumption that all countries have the same productivity. In other words, we calculate the extent to which differences in the misallocation of resources (as well as differences in the amount of physical and human capital resources) explain dispersion in income per worker.

We find misallocation of resources across plants to be a powerful explanatory factor of cross-country differences in income. For our benchmark calibration, the model explains 58% of the log variance of cross-country income dispersion. This figure should be compared to the 42% success rate of the usual model, which considers physical and human capital (average years of schooling).

---

<sup>4</sup> See Davis and Henrekson (1999) and Hsieh and Klenow (2007) for a similar strategy.

We redo the basic experiment with sub-samples of the data that are more reliable, choose different parameter calibrations, and truncate the data at different thresholds. We find that the results are not particularly driven by the parameter calibration or sample differences or biases. We conclude with a discussion of the limitations of, and possible extensions to, our exercise. The acknowledged shortcomings notwithstanding, our results suggest that misallocation of resources is a crucial determinant of income dispersion.

As noted above, the papers closest to the present study are those of Restuccia and Rogerson (2007), Hsieh and Klenow (2007), and Bartelsman, Haltiwanger, and Scarpetta (2006).

Restuccia and Rogerson (2007), consider idiosyncratic policies that have the direct effect of engendering heterogeneity in the prices to individual producers and reallocation of resources across plants but that do not change aggregate capital accumulation and aggregate relative prices. Nonetheless, the authors find substantial effects of these policies on aggregate output and measured efficiency. In their benchmark model, they find that the reallocation of resources implied by such policies can lead to reductions of as much as 30% in output, even though the underlying range of available technology is the same.

As these authors show through simulations in their model, as distortions increase, more resources are shifted towards subsidized plants, implying higher drops in output and measured productivity. The source of the measured productivity differences is that subsidized plants become larger and taxed plants become smaller. That is, whereas in the undistorted economy all plants with the same productivity are of the same size, in the distorted economy there is a non-degenerate distribution of plant size within a plant level productivity class. This entails an efficiency loss, which shows up in the aggregate measure of productivity.

In one set of simulations, the authors consider the case in which plants with low productivity receive a subsidy and plants with high productivity are taxed. Specifically, assuming that half the plants with low productivity are subsidized and the other half taxed, they find that a tax rate equal to 10% entails

an output and aggregate productivity loss of 13%. They also study the case in which large, presumably productive plants are subsidized. This policy is usually associated with the view that larger, productive plants need to assume a larger role in the development process. In the context of their model, however, policies that subsidize high productivity plants, because they also distort optimal plant size, also have negative effects on output and productivity. Quantitatively, subsidizing 10% of the highest productivity plants and taxing the rest at 40% implies a drop in output and productivity of 3%, according to their model.

Hsieh and Klenow (2007) use plant level information from the Chinese and Indian manufacturing census data to measure dispersion in the marginal products of capital and labor within 4-digit manufacturing sectors. When capital and labor are hypothetically reallocated to equalize marginal products to the extent observed in the United States, the authors find efficiency gains of 25%-40% in China and 50%-60% in India. An analogous exercise performed on those two countries using our data yields similar results.

Our work also relates to that of Bartelsman, Haltiwanger, and Scarpetta (2006) who, using an Olley and Pakes (1996) decomposition of industry-level productivity, find evidence of considerable cross-country variation in allocative efficiency in a sample of 24 industrial, transition, and emerging economies. Importantly, they show that their simulated model cannot fully match some key aspects of the firm dispersion observed in the actual data, which should be seen as a limitation of this type of model.

The rest of the paper is organized as follows. Section 2 describes the dataset and its characteristics. The model is presented in section 3 and its calibration detailed in section 4. The results are discussed in section 5. In section 6, we carry out a number of robustness tests, and in section 7 discuss some limitations and unaddressed extensions of our analysis, and present tentative conclusions.

## 2 Data Description

Recent theoretical work in macroeconomics, trade, and development has emphasized the importance of heterogeneity in production units and the level of their dynamism to economic activity. Cross-country empirical investigations at the firm and establishment level, however, are notoriously challenging because of the lack of data and difficulty of comparing the few datasets that are available.<sup>5</sup> There are few high quality time-series datasets (mostly in rich countries), but there is a clear need to combine data from multiple countries (in particular, developing ones) in order to understand, for example, the role of institutional policy differences. The paucity of data is particularly acute for developing countries, and selection problems tend to be associated with biases in, and the potential endogeneity of, the cross-country samples. The reason for the data constraint is simple: economic censuses of establishments are infrequently collected due to high cost and institutional restrictions that impose an “upper-bound” on research, especially in poor countries. No institution has the capacity or resources to overcome the limitation of “lack of census data” for a wide range of countries and periods. Hence, most methodologies face this restriction. Because the implications of firm heterogeneity warrant going forward despite existing data limitations, researchers have sought other sources of business “compilations” (registries, tax sources) such as the UNIDO, Amadeus, and the WorldBase data set used in this paper.

Dun & Bradstreet’s (D&B) WorldBase is a database of public and private companies in 205 countries and territories.<sup>6</sup> The data, compiled from a number of sources including partner firms in dozens

---

<sup>5</sup> Barteldesman, Haltiwanger, and Scarpetta (2005) review the measurement and analytical challenges of handling firm level data and attempt to harmonize indicators of firm dynamics for a number of countries. Their harmonized data, however, is available for only a few (mostly industrialized) countries, and for many of these the data are confidential.

<sup>6</sup> Dun & Bradstreet has been the leading U.S. source of commercial credit and marketing information since 1845. D&B operates in 205 countries and territories, either directly or through affiliates, agents, and associated business partners. It is also a government-approved source for assigning SIC codes to companies. Early uses of the D&B data include Caves’ (1975) size and diversification pattern comparisons between Canadian and U.S. domestic plants as well as subsidiaries of U.S. multinationals in Canada, and Lipsey’s (1978) observations regarding the reliability of the U.S. data. More recently, Harrison, Love, and McMillian (2004) used D&B’s cross-country foreign ownership information. Other research that has used D&B data includes Black and Strahan’s (2002) study of entrepreneurial activity in the United States and Acemoglu, Johnson, and Mitton’s (2005) cross-country study of concentration and vertical integration.

of countries, telephone directory records, websites, and self-registration, are meant to provide clients with contact details for and basic operating information about potential customers, competitors, and suppliers. Information from local insolvency authorities and merger and acquisition records are used to track changes in ownership and operations. All information is verified centrally via a variety of manual and automated checks.

Importantly, the unit of observation in WorldBase is the establishment rather than the firm. Establishments (also referred to as plants), like firms, have their own addresses, business names, and managers, but might be partly or wholly owned by other firms. It is therefore possible to observe new enterprises spawned from existing firms, or, by aggregating to the firm level, examine only independent new firms. Our unit of observation in this paper is the establishment. WorldBase reports each establishment's age, number of employees, and the four-digit SIC-1987 code of the primary industry in which it operates as well as sales and exports (albeit with much less extensive coverage).<sup>7</sup>

The main advantage of our database is its size. Our original sample included nearly 24 million private establishments in 2003/2004. Excluding territories and countries with fewer than 10 observations and those for which the Penn Table 6.1 provides no data left us with observations in 79 countries that exhibited significant variation in international wealth and resource misallocation, precisely what we wanted for a study of development accounting.<sup>8</sup>

In most of the countries considered, our dataset provides highly satisfactory coverage. To give some sense, we compared our data with the Statistics of U.S. Businesses collected by the U.S. Census Bureau. The U.S. 2001-2002 business census records 7,200,770 "employer establishments" with total sales of \$22 trillion; our data include 4,293,886 establishments with more than one employee with total

---

<sup>7</sup> Consistent capital data at the establishment level is available for few countries in our sample.

<sup>8</sup> The countries in the sample are Algeria, Argentina, Australia, Austria, Bangladesh, Belgium, Benin, Bolivia, Brazil, Cameroon, Canada, Chile, China, Colombia, Congo, Costa Rica, Denmark, Dominican Republic, Ecuador, Egypt, El Salvador, Ethiopia, Finland, France, Gambia, Ghana, Greece, Guatemala, Haiti, Honduras, India, Indonesia, Iran, Ireland, Israel, Italy, Jamaica, Japan, Jordan, Kenya, Korea, Malawi, Malaysia, Mali, Mauritius, Mexico, Mozambique, Netherlands, New Zealand, Nicaragua, Niger, Norway, Pakistan, Panama, Papua New Guinea, Paraguay, Peru, Philippines, Portugal, Romania, Rwanda, Senegal, Sierra Leone, Singapore, Spain, Sweden, Switzerland, Syria, Thailand, Togo, Trinidad and Tobago, Tunisia, Uganda, United Kingdom, United States, Uruguay, Venezuela, Zambia, Zimbabwe.



sales of \$17 trillion. The U.S. census records 3.7 million small (fewer than 10 employees) employer establishments; our data include 3.2 million U.S. establishments with more than one and fewer than 10 employees.

We also compare the U.S. owned subsidiaries in the WorldBase data with information on U.S. owned plants from the U.S. Bureau of Economic Analysis (see Figures 1a and 1b). The BEA's U.S. Direct Investment Abroad: Benchmark Survey, a confidential census conducted every five years, covers virtually the entire population of U.S. MNCs. The firm level data is not readily available, but the BEA reports aggregate and industry level information. In 2004, the BEA reported sales (employment) by foreign affiliates of U.S. MNCs totaling \$3,238 billion (10.02 million employees).<sup>9</sup> According to D&B data for 2005, the sum of all sales (employment) by foreign establishments that reported U.S. parents was \$2,795 billion (10.07 million employees). Not only is the total similar, but the distribution across countries is also consistent. Figure 1a plots the total sales (by country) of the foreign affiliates of U.S. MNCs as reported in the BEA's Benchmark Survey 2004 against the total sales (by country) of all plants in the D&B data that reported a U.S. based parent.<sup>10</sup> The correlation is striking, suggesting that the cross-country distribution of multinational activity in the D&B data matches that found in the U.S. BEA's benchmark survey.<sup>11</sup>

Although we consider the WorldBase data to be highly informative with respect to the question we posed, we are nevertheless aware of its limitations. In our final sample, the number of observations per country ranges from more than 7 million establishments in the United States to fewer than 20 in Malawi. That this variation reflects differences not only in country size, but also in the intensity with which Dun & Bradstreet samples in different countries, raises the concern that our measures of size might be affected by cross-country differences in the sample frame.

---

<sup>9</sup> See [http://bea.gov/bea/di/usdop/all\\_affiliate\\_entrty.xls](http://bea.gov/bea/di/usdop/all_affiliate_entrty.xls).

<sup>10</sup> See [http://bea.gov/bea/di/usdop/all\\_affiliate\\_entrty.xls](http://bea.gov/bea/di/usdop/all_affiliate_entrty.xls).

<sup>11</sup> This is likely due to errors and differences in the classification of subsidiaries as U.S. or not.

For example, in countries in which coverage is lower, more established, often older and larger, enterprises might be overrepresented in the sample, which could bias our results. In particular, we know that poorer countries typically have a sizeable informal sector populated by small production units (Schneider and Enste 2000). Because it probably does not capture most of the informal sector, the Dun & Bradstreet sample tends to underreport the number of smaller establishments in poor countries. To address this concern, we slice the data in different ways and redo our calculations for many possible cases.

To mitigate the potential for bias resulting from not having small establishments in poor countries represented, we truncate the data for all countries. In our benchmark exercise, we use only information for establishments with at least 20 employees, but we also work with other thresholds to test the robustness of the results. Similarly, although in our benchmark exercise we use all countries for which there are more than 10 observations, we also work with sub-samples in which countries have large numbers of observations.<sup>12</sup>

We depict the main features of the dataset in Figures 2 to 5, in which we measure the size of an establishment in terms of the logarithm of the number of employees. Income per worker, from the Penn World Table version 6.1, refers to PPP adjusted dollars. Figures 2, 3, 4, and 5 plot, respectively, the mean, “coworker mean,”<sup>13</sup> variance, and skewness of the establishment size distributions of each country against income per worker (in logarithm). Note that mean size, coworker mean size, and variance size are negatively related to income, with correlations equal to -0.73, -0.73, and -0.62, respectively (significant at the 1% level). Skewness, in contrast, is positively correlated with income (0.52, also significant at the 1% level).

---

<sup>12</sup> We thank Daron Acemoglu for pointing out this problem to us and Kei-Mu Yi and Mark Bilal for suggesting this solution. An alternative solution would be to take a stand on the distribution function and artificially complete the sample for poor countries. The approach of cutting out the plants below a threshold is non-parametric and probably minimizes distortions.

<sup>13</sup> The “coworker mean” is defined as average firm size that weights each plant by its own size in calculating a mean; see Davis and Haltiwanger (1991).

Figure 6 depicts the relation between mean size of the establishment and size of the market, measured in terms of the number of employees (as reported in Penn World Table 6.1). Note that these two variables are not correlated (the correlation is equal to 0.02, which is not significant at the 5% level).

Some additional intuition can be grasped by directly comparing selected countries' histograms. In Figure 7, the horizontal axis refers to intervals for the number of employees; the vertical axis reports the frequency of firms within each bracket. Notice that, starting with the United States, the curve is always decreasing, indicating that small plants constitute the most common form of production unit. Typically, histograms tend to be slightly flat, more like those of Austria or Brazil than that of the United States. India, in which plants tend to be much larger, is an extreme case, Norway, in which the plant size distribution is more concentrated in small firms than even in the United States, a curious case.

### 3 Model

Our model draws heavily on the work of Melitz (2003), Restuccia and Rogerson (2007), and Hsieh and Klenow (2007). Plant dynamics and policy distortions are as in Restuccia and Rogerson (2007), but we assume that production units have constant returns to scale technologies and some degree of market power, as in Hsieh and Klenow (2007). Because of the degree to which our model borrows from these previous works, we attempt to be as concise as possible.

Assume the final output is a C.E.S. aggregate of a continuum of differentiated goods, indexed by  $\omega$ :

$$Y = \left( \int_{\omega \in \Omega} y_{\omega}^{\frac{\sigma-1}{\sigma}} d\omega \right)^{\frac{\sigma}{\sigma-1}} \quad (1)$$

where the measure of the set  $\Omega$  represents the mass of available goods. This implies that demand for good  $\omega$  is given by

$$y_{\omega} = \frac{Y}{p_{\omega}^{\sigma}} \quad (2)$$

where  $p_\omega$  denotes the price of good  $\omega$  and the price of final output is normalized to one.

The production unit is the plant (establishment). There exists a continuum of plants, each of which chooses to produce a different variety  $\omega$ . Plants' technologies share the same Cobb-Douglas functional form, but might differ in their productivity factors, which are indexed by  $\varphi$ :

$$y_\varphi = AA_\varphi k_\varphi^\alpha l_\varphi^{1-\alpha} \quad (3)$$

where  $A$  is the economy-wide productivity factor,  $A_\varphi$  is the plant-specific productivity factor,  $k_\varphi$  and  $l_\varphi$  are, respectively, the capital rented and labor hired by such a plant, and  $\alpha$  is the usual capital share parameter. Conditional on remaining in operation, an incumbent plant maximizes its period profit, which is given by

$$\pi_\varphi = (1 - \tau_\varphi) p_\varphi y_\varphi - r k_\varphi - w l_\varphi \quad (4)$$

where  $\tau_i$  denotes a plant specific output tax (or subsidy), and  $r$  and  $w$  denote the rental rates of capital and labor, respectively. Note that we assume taxes to be a function of a plant's productivity. Following Restuccia and Rogerson (2007), one should understand  $\tau_i$  to be not literally a tax, but rather a general distortion. Among the different types of policies that might generate these effects are non-competitive banking systems, product and labor market regulations, corruption, and trade restrictions.

Profit maximization, subject to the demand curve, implies the following expressions:

$$l_\varphi = \frac{y_\varphi}{AA_\varphi} \left( \frac{(1-\alpha)r}{\alpha w} \right)^\alpha \quad (5)$$

$$k_\varphi = \frac{y_\varphi}{AA_\varphi} \left( \frac{\alpha w}{(1-\alpha)r} \right)^{1-\alpha} \quad (6)$$

$$\frac{\left( P_\varphi - \frac{r^\alpha w^{1-\alpha} \left[ \left( \frac{1-\alpha}{\alpha} \right)^\alpha + \left( \frac{\alpha}{1-\alpha} \right)^{1-\alpha} \right]}{(1-\tau_\varphi) AA_\varphi} \right)}{P_\varphi} = \frac{1}{\sigma} \quad (7)$$

which correspond to the labor and capital allocation and pricing equation (Lerner's formula). Plugging the last expression back into demand (2) gives the amount produced by each plant,

$$y_\varphi = Y \left( \frac{(\sigma-1)(1-\tau_\varphi)AA_\varphi}{\sigma r^\alpha w^{1-\alpha} \left[ \left(\frac{1-\alpha}{\alpha}\right)^\alpha + \left(\frac{\alpha}{1-\alpha}\right)^{1-\alpha} \right]} \right)^\sigma \quad (8)$$

The equilibrium will be characterized by a mass  $M$  of plants (and thus  $M$  goods) and a distribution  $\mu_\varphi$  of plant productivity factors over a subset of  $(0, \infty)$ . In such equilibrium, the aggregate levels of capital and labor are given by  $K = \int_0^\infty Mk_\varphi \mu_\varphi d\varphi$  and  $L = \int_0^\infty Ml_\varphi \mu_\varphi d\varphi$ . Plugging (8) into (6) and (7) yields expressions for  $K$  and  $H$  as functions of  $Y$ . Combining these expressions with (1) and (8), we obtain

$$Y = A \frac{\left[ \int_0^\infty (1-\tau_\varphi)^{\sigma-1} A_\varphi^{\sigma-1} M \mu_\varphi d\varphi \right]^{\frac{\sigma}{\sigma-1}}}{\int_0^\infty (1-\tau_\varphi)^\sigma A_\varphi^{\sigma-1} M \mu_\varphi d\varphi} K^\alpha L^{1-\alpha} \quad (9)$$

This equation will constitute the backbone expression for our calculations. As we will see in the next section, it is not necessary to specify the rest of the economic environment to use this equation. We do so, however, to gain a better understanding of the interplay of the different effects of the hypothesis on the results.

Following Restuccia and Rogerson (2007), we consider the economy to be populated by an infinitely lived representative household with preferences over streams of consumption goods that does not care about leisure. There is also a large (unbounded) pool of plants prospectively entering the industry. To enter, however, incurs a cost; prospective entrants must make their entry decision knowing that they face a distribution of potential draws for  $A_\varphi$  (and thus  $\tau_\varphi$ ). Although a plant's productivity and tax remain constant over time, in any given period each plant faces a constant probability of death.

The steady-state equilibrium of this model is obtained as follows. As usual, the consumer problem determines the rental rate of capital, which is a function of the time discount factor and capital depreciation rate. Given the rental rate of capital, the zero profit condition for plant entry determines the steady-state wage rate. Labor supply being inelastic, in equilibrium, total labor demand must be equal to one. It turns out that labor market clearing determines the equilibrium mass of plants.

## 4 Calibration

As noted above, our dataset consists of establishment-size histograms for each country. The fundamental step in our calibration is thus to find plant-specific tax distortion profiles that make each country's artificial economy plant size histogram match the data. That is, we must find the distortions profile that would make the histogram of the U.S. economy, which is presumably undistorted, the histogram of another country. To do this, we need to map the plants of each country to the plants of the U.S. economy, which involves dividing each country's histogram into a certain (large) number of cells denoted by  $N$ . To achieve this mapping as simply and directly as possible, we make this division such that all countries' histograms have the same number of cells. We further give the cells of each histogram the same mass. As we shall see, however, calibration requires that across countries the cells have different masses.

Note that  $N$  denotes the number of cells, not the number of establishments, in the sample. In the case of  $N$  much greater than the number of establishments in the sample, there will be many cells for each establishment.<sup>14</sup> The relevant implication here is that we are capturing (at most)  $N$  moments of each distribution.

Having completed the division of the histograms, we can begin to find plant specific productivity factors and taxes. Plugging equation (8) into equation (5) and comparing the resulting labor input for two different plants gives us

$$\frac{l_i}{l_j} = \frac{(1-\tau_i)^\sigma A_i^{\sigma-1}}{(1-\tau_j)^\sigma A_j^{\sigma-1}} \quad (10)$$

where  $i$  and  $j$  refer to two plants (i.e., two different cells of the histogram). As noted earlier, we assume the U.S. economy to be sufficiently undistorted to provide a good benchmark against which to assess

---

<sup>14</sup> For example, consider a country "A" that has two plants with 10 employees and one plant with 20 employees, and a country "B" that has three plants with 11 employees and one plant with 12 employees. If we choose  $N = 12$ , the "artificial histogram" of country "A" will have eight cells (or plants) with 10 employees and four cells with 20 employees. The artificial histogram of country "B" will have nine cells with 11 employees and three cells with 12 employees. In the case of  $N$  not a multiple of the number of plants, parts of different plants will be assigned to the same cell. But this is not quantitatively relevant given the large number of cells.

establishment specific productivities. More precisely, we assume  $\tau_j = 0$  for all U.S. establishments, and use the U.S. data to determine the  $A_j$  factors. We do this by normalizing  $A_1 = 1$  and using equation (10) to determine  $A_i$ , for  $i = 2, 3, \dots, N$ .

The next step is to find the distortions for each country, which we accomplish by mapping the histogram cells of each country to the U.S. histogram cells. This is done the natural way, by sorting the histogram cells by number of employees (see Figure 8). The mapping between any two countries' histograms is thus such that the  $n^{\text{th}}$  smaller cell of one corresponds to the  $n^{\text{th}}$  smaller cell of the other.<sup>15</sup> This approach engenders the *minimum distortion possible* to our economies, that is, tax distortions affect establishment size but do not change the size ordering of a country's establishments. In other words, distortions never result in more productive establishments having fewer input factors than less productive establishments.<sup>16</sup>

Returning to equation (10), we can use the previously determined  $A_i$ 's to obtain  $\tau_i$  as a function of  $\tau_1$ , for  $i = 2, 3, \dots, N$ , for each country. More precisely, using

$$(1 - \tau_i^*) = (1 - \tau_i) / (1 - \tau_1) \quad (11)$$

we can obtain  $\tau_i^*$  for  $i = 1, 2, 3, \dots, N$ . Note that we do not need  $\tau_1$  to employ equation (9). If we plug equation (11) into equation (9), the terms on  $(1 - \tau_1)$  in the numerator and the denominator cancel out, giving equation (9) with  $\tau_i^*$  replacing  $\tau_i$ .

To calibrate the mass of each country's plant distribution, we resort to the labor market clearing equation,  $L = \int_0^\infty M_l \mu_\phi d\phi$ . In practice, after the histogram divisions, and remembering that we are normalizing the labor force to unity, this becomes

---

<sup>15</sup> Continuing with our example, all eight cells with 10 employees of country "A" will be mapped to cells of 11 employees of country "B". One of the cells of 20 employees of country "A" will be mapped to a cell of 11 employees of country "B". And the remaining three cells of 20 employees of country "A" will be mapped to the three cells of 12 employees of country "B".

<sup>16</sup> We can think of the mapping between histograms as an identification problem that requires some assumption. Restuccia and Rogerson (2007) analyze various alternatives including the case in which there is no correlation between distortion and size distribution. The assumption adopted here has the property of minimizing distortion and thus underestimating the explanatory power of misallocation.

$$M = N / \sum_{i=1}^N l_i \quad (12)$$

We borrow the technology parameters from the literature. As usual, we assume  $\alpha = 1/3$ . In our benchmark calibration, we set  $\sigma = 6$ . This parameter value delivers a 20% mark-up in price over marginal cost, which is in line with Rotemberg and Woodford (1992).

To relate our model to Caselli's (2005) calculations, we substitute labor for "quality adjusted" work force. With some abuse of notation, we rewrite equation (9) to include the human capital factor  $h$ :

$$Y = A \frac{\left[ \sum_{i=1}^N M(1 - \tau_i^*)^{\sigma-1} A_i^{\sigma-1} \right]^{\frac{\sigma}{\sigma-1}}}{\sum_{i=1}^N M(1 - \tau_i^*)^{\sigma} A_i^{\sigma-1}} K^{\alpha} (Lh)^{1-\alpha} \quad (13)$$

We then follow Caselli (2005) in calibrating the remaining parameters, the values for  $Y$ ,  $K$ , and  $h$ , for each country. Briefly,  $Y$  and  $K$  are from the 6.1 version of the Penn World Tables. Capital is calculated by perpetual inventory method, with depreciation rate equal to 6% and the initial capital determined by the initial investment rate and its geometric growth over the period. Following Hall and Jones (1999),  $h$  is measured by the formula  $h = \exp(\psi(s))$ , where, following Barro and Lee (2001),  $\psi$  is piecewise linear and  $s$  denotes average number of years of schooling. We continue to normalize the size of the labor force to  $L = 1$ , as we evaluate output in terms of number of workers.

An interesting aspect of the calibration is that it did not require that we specify many economy parameters such as the household's preference discount factor, plants' entry costs, and the probability that a plant exits the market. Such specification would have been necessary to obtain a complete characterization of the equilibrium including determination of factor prices and tax distortions (i.e.,  $\tau_1$ ). We would also have had to use the "free entry" condition, which was not required for our purposes.

For the purposes of this paper, the distribution of plant-size is a summary statistic of the resource misallocation for each country. That is, in order to employ the chosen model to determine cross-country income differences, we do not need to know entry costs or the probability that a plant dies, which



presumably depends on the bankruptcy laws. But an analysis of these characteristics is probably essential for drawing explicit policy implications related to inter plant misallocation of resources.

## 5 Results

To perform the calibration, we make the number of cells,  $N$ , equal to 100,000. With that, the artificial histogram becomes a good approximation of the real data histogram even when establishment size distribution is extremely skewed. We then obtain establishment productivity for the United States,  $A_i$  (Figure 9), and, for each country, the distortions  $\tau_i$  (Figure 10).<sup>17</sup>

Figure 9 presents the U.S. plant size distribution, Figure 10 the type of distortion needed to transform that distribution into another country's plant-size distribution. Remember that  $\tau_1$ , the distortion of the smallest plants, was normalized to zero for all countries. Thus, one should not understand  $\tau_j$  to be indicative of the aggregate distortion. Rather, Figure 10 indicates, for each country, the magnitude of distortions over plants *relative to* the distortions over small plants.

Note the considerable variety in  $\tau$  profiles. For some countries,  $\tau$  is not monotonic in the size of the plant; for some countries it is positive, for others negative. The cloud of  $\tau$  profiles also indicates that the "median" distortion corresponds to negative values for  $\tau$ , which become more negative with plant size. That is, the most typical distortion corresponds to subsidies to big plants (or taxes to small plants) that increase (decrease) with the size of the plant.

After obtaining the distortions, we calculate the impact of resource misallocation on each country's productivity. Analogously to Caselli (2005), we make

$$y = ADk^\alpha h^{1-\alpha} \tag{14}$$

where  $y = Y/L$  and  $k = K/L$  are output per worker and capital per worker, respectively, and  $D$  is the misallocation factor, defined as

---

<sup>17</sup> Although we chose  $N = 100,000$  for our calculations, due to graphical limitations, the figures depict the results for  $N = 100$ .

$$D \equiv \frac{\left[ \sum_{i=1}^N M(1-\tau_i^*)^{\sigma-1} A_i^{\sigma-1} \right]^{\frac{\sigma}{\sigma-1}}}{\sum_{i=1}^N M(1-\tau_i)^{\sigma} A_i^{\sigma-1}} \quad (15)$$

To calculate the measure of the success of our exercise and compare to previous work, we define the *factor-only model*,  $y_{KH}$ , and the *misallocation model*,  $y_{DKH}$ , as, respectively,

$$y_{KH} \equiv k^{\alpha} h^{1-\alpha} \quad (16)$$

$$y_{DKH} = Dk^{\alpha} h^{1-\alpha} \quad (17)$$

Our measure of success is based on the question: What would the dispersion of incomes be if all countries had the same  $A$ ? That is, we define the measure of success of the factor-only model and misallocation model, respectively, as

$$success_{KH} \equiv \frac{Var[\log(y_{KH})]}{Var[\log(y)]} \quad (18)$$

$$success_{DKH} \equiv \frac{Var[\log(y_{DKH})]}{Var[\log(y)]} \quad (19)$$

Before analyzing the results of our benchmark experiment, summarized in Table 1, it is useful to check their consistency with Caselli's (2005). Because our sample contains 79 countries and his 94, the success of the factor-only model in our case is 0.417, slightly greater than the 0.385 obtained in his calculation. Analogous observations apply to each sub-sample of countries.

The first and foremost observation about the misallocation model is that it displays a success measure of 0.58. The 16 percentage points difference, being about 39% higher than the corresponding figure for the factor-only model, indicates that dispersion of misallocation across countries is quantitatively important in addition to physical and human capital.

We further observe that the misallocation model displays high correlation with countries' income, equal to 0.95, as shown in Figure 11. In fact, the correlation between the misallocation factor  $D$  and

countries' income (in logarithms) is equal to 0.54. That is, misallocation is not only adding noise to the model, it is contributing to our understanding of income differences.

The sub-samples of countries mostly yield conclusions that parallel those reached in Caselli's (2005) discussion of the factor-only model. Variation in log income per worker is higher in sub-samples that are, on average, poorer (non-OECD, Africa). Moreover, it is more difficult to explain precisely the income differences in sub-samples in which poor countries are involved, which is where a model is most needed. Unfortunately, as Table 1 indicates, the misallocation model does not help much in this dimension. Although it can fully account for the income variation of OECD countries, the misallocation model can explain only about half the dispersion in the non-OECD group.

For the Asia and Oceania subgroup, on the other hand, the misallocation model performs much better than the factor-only model. Importantly, this was not driven by a single country. Rather, the misallocation factor increased the dispersion of incomes in a homogeneous way, displaying a correlation with actual incomes of 0.93.

## **6 Robustness**

We test the sensitivity of our results by conducting a series of robustness checks. Specifically, we change some of the model's hypotheses and slice the data in different ways. The main results are unchanged by these manipulations.

### **6.1 Sampling Intensity**

Our benchmark experiment includes all countries with sample size greater than 10 observations (i.e., 10 establishments). This enabled us to study a large group of countries, but might raise concerns about the reliability of the data and of results for countries with fewer observations. We report here the results obtained when we select only countries with sample sizes greater than 100 establishments, 1,000 establishments, and 10,000 establishments. Reducing the dataset in this way has two effects, (1) it

restricts the sample to countries with higher sample intensity, and (2) it excludes countries in which Dun & Bradstreet collected little information. The latter tend to be poor countries in which smaller establishments are likely to be underrepresented. Coincidentally, these are the countries in which the dual market (black market) operates, making the collection of data more difficult. Remember, however, that, knowing that this could bias our results, we truncated the data in the benchmark exercise.

Table 2 displays the results. Note that as we reduce the sample of countries, the misallocation model exhibits similar performance. Although it improves for the sub-sample of more than 1,000 establishments, its explanatory power returns to 0.58 for more restrictive (and reliable) datasets. We take from this that our original experiment is probably a good quantitative point of reference.

## **6.2 Elasticity of Substitution**

In our benchmark experiment, we calibrate the elasticity of substitution as  $\sigma = 6$ . Although this is our preferred calibration, there is considerable uncertainty about this parameter. In this section, we redo the entire experiment using  $\sigma = 3.8$  and  $\sigma = 10$ . The former figure, used by Bernard et al. (2003), implies a 36% mark-up in price over marginal cost; the latter figure delivers an 11% mark-up in line with Basu and Fernald's (1997) findings.

Table 3 presents the results for  $\sigma = 3.8$ . The first line of the table, which reports results for the entire sample, gives a favorable first impression. For this calibration, success increases to 0.755. Such a reading is, however, misleading. The sub-samples' analysis indicates that the misallocation model tends to over-explain the data in many cases. This might be a consequence of the small number of observations in each sub-sample, or a problem with the data. We believe it to be more reasonable to conclude that the problem is with the calibration; in our view, with  $\sigma = 3.8$ , the model overestimates the effect of misallocation.

Table 4 reports the results for  $\sigma = 10$ . For this calibration, the misallocation model's success is 0.500 and the sub-samples do not indicate any inconsistencies. The question here is whether this

calibration is more adequate than our benchmark. Although it is hard to know for sure, casual observation suggests that industries in developing countries tend to be less competitive than those in developed countries, and are thus characterized by higher mark-ups. With this in mind, and given that  $\sigma = 10$  was obtained for the U.S. economy, we think it is reasonable to consider the Table 4 results to be a lower bound for the actual success of the misallocation model.

### **6.3 Truncation**

In the benchmark experiment, we truncate our dataset. The rationale for considering only establishments larger than 20 employees was that differences in the intensity with which Dun & Bradstreet samples establishments might be affected by cross-country differences and, thus, bias our results. Poorer countries typically have large, informal sectors characterized by small establishments that might not be captured in the dataset. Consequently, the dataset might erroneously indicate, for example, a low mean for the plant size distribution in poor countries.

Of course, there is no clear indication of the correct threshold for truncating the data. The fact that the official agency in some countries (such as Netherlands) collects data only for establishments with more than 20 employees suggests that this is a reasonable threshold. In any case, Tables 5 and 6 address this question by reporting the experiment results for the cases in which the threshold was 10 employees and 50 employees, respectively.

As expected, the results in Tables 5 and 6 are qualitatively the same as those in Table 1. From a quantitative point of view, these experiments indicate that the results are not very sensitive to the threshold. For a relatively large change in the threshold, the main success measure varied by less than 10%. Our view is that the benchmark results thus represent a good compass reading.

## 6.4 Distribution Information

To calibrate the model in our benchmark experiment we used the plant-size distribution, which has the advantage of fully exploiting the information contained in the data. A concern, however, is that potential noise in the data might yield misleading results. To address this issue, we redo our calculations using only the mean of each country distribution.

Note that the expression for the misallocation factor  $D$  (equation 4) can be split into two factors. The first has to do with the mean of the distribution, the other with its higher moments. In order to consider only the mean, we assume the second factor of the expression to be equal for all countries, and redo the calculations using the first factor in the place of  $D$ .

$$D \equiv \frac{\left[ \sum_{i=1}^N M(1-\tau_i^*)^{\sigma-1} A_i^{\sigma-1} \right]^{\frac{\sigma}{\sigma-1}}}{\sum_{i=1}^N M(1-\tau_i^*)^{\sigma} A_i^{\sigma-1}} = M^{\frac{1}{\sigma-1}} \left\{ \frac{\left[ \sum_{i=1}^N (1-\tau_i^*)^{\sigma-1} A_i^{\sigma-1} \right]^{\frac{\sigma}{\sigma-1}}}{\sum_{i=1}^N (1-\tau_i^*)^{\sigma} A_i^{\sigma-1}} \right\} \quad (20)$$

The results that use only the mean, reported in Table 7, are similar to those for the benchmark case, save that the success rates are slightly smaller (56% rather than 58% for all countries). The exercise suggests that our findings are not driven by noise in the dataset and that most of the relevant information is contained in the mean of the distribution.

## 6.5 Multiple Sectors

Our benchmark experiment assumes the economy to have only one sector. In this subsection, we redo our experiment under the assumption that the economy has multiple sectors, as in Hsieh and Klenow (2007). Specifically, we assume that the final good is produced by combining the output  $Y_s$  of  $S$  manufacturing industries, according to a Cobb-Douglas technology thus:

$$Y = \prod_{s=1}^S Y_s^{\theta_s} \quad \text{where} \quad \sum_{s=1}^S \theta_s = 1 \quad (21)$$

Expenditure minimization implies

$$P_s Y_s = \theta_s Y \quad (22)$$

where  $P_s$  denotes the price of industry  $s$  and the final good price normalized to 1. As before, each industry output is the aggregate of differentiated products

$$Y_s = \left( \int_{\omega \in \Omega_s} y_i^{\frac{\sigma-1}{\sigma}} d\omega \right)^{\frac{\sigma}{\sigma-1}} \quad (23)$$

where the measure of the set  $\Omega_s$  represents the mass of available goods in sector  $s$ . There is a continuum of plants, each of which chooses to produce a different variety  $\omega$ . These plants share the same Cobb-Douglas technology functional form, but might differ in their productivity factors (as in equation (3)) and maximize profits facing a plant-specific output distortion (as in equation (4)).

To address misallocation distortion in this environment, we calculate the factor  $D$  as

$$D \equiv \prod_{s=1}^S \left\{ \frac{\left[ \sum_{i=1}^{N_s} M_s (1 - \tau_i^*)^{\sigma-1} A_i^{\sigma-1} \right]^{\frac{\sigma}{\sigma-1}}}{\sum_{i=1}^{N_s} M_s (1 - \tau_i)^\sigma A_i^{\sigma-1}} \right\}^{\theta_s} \quad (24)$$

As in Hsieh and Klenow (2007), we effectively make the misallocation factor equal to the weighted geometric average of the misallocation factor in each industry  $s$ . Note that this way of calculating the misallocation factor considers only misallocation that occurs *within* each sector. It does not consider the eventual misallocation of resources that makes sectors smaller or larger than their efficient size. A reason for calculating misallocation this way is that countries might specialize in sectors in which they have comparative advantage, in which case they could have sectors with sizes different from those of the U.S. economy (our benchmark) and nevertheless be efficient. In any case, it is noteworthy that calculating distortions this way yields a lower bound of misallocation.

To implement this exercise, we restrict our attention to countries for which we have at least 10 observations (i.e., 10 establishments) in at least 30 sectors, sector here referring to a two-digit SIC industry. This leaves a sub-sample of 32 countries. The choice of 30 sectors is arbitrary, but turns out to be a reasonable compromise between a large number of sectors and a large number of countries.

As before, the calibration methodology consists of matching model distributions to actual histograms, but now this is done for each sector of each country. Again taking the U.S. economy as a benchmark, we find the distortion profiles for other countries. To obtain  $\theta_s$ , the share of each sector in the economy, we use data on establishment revenues for the U.S. economy, also from the WorldBase dataset and equation (22).

The results are presented in Table 8, which compares the success measures for the one sector and multiple sector economies for the same sub-sample of countries. The success of the factor-only economy is the same in both cases, as this model always contains only one sector. The success of the misallocation model is comparable in both specifications. Success is smaller in the multiple sector model, but this is probably a consequence of the way it was formulated. This can be seen as another indication of the robustness of the results.

Another interesting observation with regard to the multiple sector experiment is its relationship to Hsieh and Klenow's (2007) experiment. Their hypothetical "liberalizations" in China and India consider the elimination of various intra sector distortions such that capital and labor are hypothetically reallocated to equalize marginal products to the extent observed in the United States. Although they employ a different dataset and calibration than we use, that the experiments share the same general framework invites comparison.

Hsieh and Klenow (2007) find the gains from reallocating resources to be on the order of 25%-40% in China and 50%-60% in India. According to our calculations, in the multiple sector experiments, the gains for India and China are 31% and 35%, respectively. In the one sector experiments, these gains



are, again respectively, 41% and 62%. That our results seem to be fairly consistent with theirs is a final reassuring sign of the robustness of our experiments.

## 7 Conclusions

We calculated the implicit distortion needed to generate size distributions consistent with size histograms for a sample of 79 countries. We found the loss in output caused by these distortions to be quantitatively important. For our preferred calibration, the model explains 0.58 of the log variance of income per worker. This figure should be compared to the 0.42 success rate of the usual model. That is, when added to differences in resource accumulation (human and physical capital), differences in misallocation of resources add 0.16 (an increase of about 39%) to the explanatory power of our model of dispersion in cross-country income per worker. This result seems to be robust to changes in parameter calibrations and in the sub-samples in which the data are more reliable (i.e., rich countries).

One potential improvement to our analysis would be to make use of richer datasets. In particular, a dataset that also contained information on revenues and capital per establishment would support a richer model with many distortions, as in Hsieh and Klenow (2007). In the present case, it is possible that one distortion could cancel out or add to the effect of another distortion, thus affecting total misallocation. The work of Bartelsman, Haltiwanger, and Scarpetta (2006) is a step in this direction.

There is also potential for improvement in the theoretical framework. Following the literature, we use the United States as an undistorted benchmark from which we derive other countries' distortions. An alternative approach would be to calibrate the distortions observed in the United States and obtain the characteristics of a truly undistorted economy to be used as a benchmark. This would require more modeling structure and assumptions.

Related to this last point, our exercise assumed that all countries share the same distribution of establishments' specific productivities as the United States, that is, that establishment productivities are not correlated with establishments' distortions. In contrast, richer models of plant dynamics such as that

developed by Ericson and Pakes (1995) consider plants' development to be associated with "active learning." In such models, a plant's productivity tends to be connected to the distortion it faces. That is, distortions might lead a plant to invest more or less in R&D, which, in turn, would determine its productivity. As a consequence, the effects of misallocation might be different from those calculated here.

Another modeling issue worth exploring concerns the amount of competition among establishments in an industry. Our model assumes that plants face a symmetric and constant elasticity of substitution that exogenously determines equilibrium mark-ups. A richer specification could endogenously determine the distribution of mark-ups and capture the impact of plants' entry costs on the degree of concentration in industries.

Finally, research should also shed light on how particular sources of inefficiency, such as credit market imperfections, macroeconomic volatility, defective bankruptcy procedures, or a malfunctioning regulatory environment, are driving cross-country differences in plant size distribution. This would be fruitful for drawing explicit policy implications. We leave this task to future work.

## **8 References**

- Acemoglu, D., Johnson, S., and Mitton, T. (2005) "Determinants of Vertical Integration: Finance, Contracts and Regulation," NBER Working Paper 11424.
- Barro, R. J. and Lee, J. (2001) "International Data on Educational Attainment: Updates and Implications," *Oxford Economic Papers* 53: 541-563.
- Bartelsman, E, Haltiwanger, J., and Scarpetta, S. (2005) "Measuring and Analyzing Cross-Country Differences in Firm Dynamics," Unpublished manuscript.
- Bartelsman, E, Haltiwanger, J., and Scarpetta, S. (2006) "Cross-Country Differences in Productivity: The Role of Allocative Efficiency," Unpublished manuscript.
- Basu, S. and Fernald, J. G. (1997) "Returns to Scale in U.S. Production: Estimates and Implications," *Journal of Political Economy* 105: 249-283.

- Bernard, A. B., Eaton, J., Jensen, J. B., and Kortum, S. (2003) "Plants and Productivity in International Trade," *American Economic Review* 113: 1268-1290.
- Black, S. E. and Strahan, P. E. (2002) "Entrepreneurship and Bank Credit Availability," *Journal of Finance* 57: 2807-2833.
- Caselli, F. (2005) "Accounting for Cross-Country Income Differences," in *Handbook of Economic Growth*, P. Aghion and S. Durlauf (eds.), Elsevier North Holland, Amsterdam, The Netherlands.
- Caves, R., (1975) *Diversification, Foreign Investment, and Scale in North American Manufacturing Industries*, Ottawa: Economic Council of Canada.
- Davis, S. J. and Haltiwanger, J. (1991) "Wage Dispersion Between and Within U.S. Manufacturing Plants, 1963-1986" *Brookings Papers in Economic Activity. Microeconomics*: 115-200.
- Davis, S. J. and Henrekson, M. (1999) "Explaining National Differences in the Size and Industry Distribution of Employment," *Small Business Economics* 12: 59-83.
- Ericson, R. and Pakes, A. (1995) "Markov-Perfect Industry Dynamics: A Framework for Empirical Work," *Review of Economic Studies* 62: 53-82.
- Hall, B. and Jones, C. (1999) "Why Do Some Countries Produce So Much More Output Per Worker Than Others?" *Quarterly Journal of Economics* 114(1): 83-116.
- Harrison, A., Love, I., and McMillan, M. S. (2004) "Global Capital Flows and Financing Constraints," *Journal of Development Economics* 75: 269-301.
- Howitt, P. (2000) "Endogenous Growth and Cross-Country Income Differences," *American Economic Review* 90: 829-846.
- Hsieh, C-T and Klenow, P. J. (2007) "Misallocation and Manufacturing TFP in China and India," Unpublished manuscript.
- Keller, W. (2004) "International Technology Diffusion," *Journal of Economic Literature* 42: 752-782.
- Klenow, P. J. and Rodriguez-Clare, A. (1997) "The Neoclassical Revival in Growth Economics: Has It Gone Too Far," *NBER Macroeconomics Annual*.

- Lipsey, R. (1978) "The Creation of Microdata Sets for Enterprises and Establishments," *Annales de l'INSEE* 30-31: 395-422.
- Lucas, R., (1978) "On the Size Distribution of Business Firms," *The Bell Journal of Economics* 9: 508-523.
- Melitz, M. J. (2003) "The Impact of Trade on Intra-Industry Reallocations and Aggregate Industry Productivity," *Econometrica* 71: 1695-1725.
- Olley, G. S. and A. Pakes (1996) "The Dynamics of Productivity in the Telecommunications Equipment Industry," *Econometrica* 64: 1263-1297.
- Parente, S. L. and Prescott, E. C. (1994) "Barriers to Technology Adoption and Development," *Journal of Political Economy*, 102: 298-321.
- Prescott, E. C. (1998) "Needed: A Theory of Total Factor Productivity," *International Economic Review* 39: 525-551.
- Restuccia, D. and Rogerson, R. (2007) "Policy Distortions and Aggregate Productivity with Heterogeneous Plants," NBER Working Paper No. W13018.
- Rotemberg, J. J. and Woodford, M. (1992) "Oligopolistic Pricing and the Effects of Aggregate Demand on Economic Activity," *Journal of Political Economy* 100: 1153-1207.
- Schneider, F. and Enste, D. H. (2000) "Shadow Economies: Size, Causes and Consequences," *Journal of Economic Literature* 38: 77-114.
- Sutton, J. (1997) "Gilbrat's Legacy," *Journal of Economic Literature* 35: 50-59.

Table 1: Success in Benchmark Experiment

Sub-sample	Obs.	Var[log( $y$ )]	Var[log( $y_{KH}$ )]	Var[log( $y_{DKH}$ )]	Success $_{KH}$	Success $_{DKH}$
All	79	1.26	.52	.73	.42	.58
OECD	22	.047	.030	.049	.65	1.0
Non-OECD	57	.91	.36	.47	.39	.52
Africa	22	.75	.25	.27	.33	.36
Americas	23	.39	.20	.32	.50	.82
Asia and Oceania	18	.64	.32	.59	.49	.91
Europe	16	.16	.036	.061	.23	.40

Table 2: Success in More Reliable Sub-samples

Sub-sample	Obs.	Var[log( $y$ )]	Var[log( $y_{KH}$ )]	Var[log( $y_{DKH}$ )]	Success $_{KH}$	Success $_{DKH}$
More than 10 establishments	79	1.26	.53	.72	.42	.58
More than 100 establishments	65	.97	.41	.58	.42	.60
More than 1,000 establishments	41	.44	.18	.32	.41	.73
More than 10,000 establishments	27	.23	.087	.13	.38	.58

Table 3: Success in Experiment with Elasticity of Substitution  $\sigma = 3.8$

Sub-sample	Obs.	Var[log( $y$ )]	Var[log( $y_{KH}$ )]	Var[log( $y_{DKH}$ )]	Success $_{KH}$	Success $_{DKH}$
All	79	1.26	.52	.95	.42	.75
OECD	22	.047	.030	.086	.65	1.8
Non-OECD	57	.91	.36	.61	.39	.68
Africa	22	.75	.25	.32	.33	.42
Americas	23	.39	.20	.46	.50	1.16
Asia and Oceania	18	.64	.32	.87	.49	1.35
Europe	16	.16	.036	.11	.23	.70

Table 4: Success in Experiment with Elasticity of Substitution  $\sigma = 10$

Sub-sample	Obs.	Var[log( $y$ )]	Var[log( $y_{KH}$ )]	Var[log( $y_{DKH}$ )]	Success $_{KH}$	Success $_{DKH}$
All	79	1.26	.52	.63	.42	.50
OECD	22	.047	.030	.037	.65	.78
Non-OECD	57	.91	.36	.41	.39	.46
Africa	22	.75	.25	.25	.33	.34
Americas	23	.39	.20	.26	.50	.66
Asia and Oceania	18	.64	.32	.45	.49	.70
Europe	16	.16	.036	.044	.23	.29

Table 5: Success in Experiment with Minimum Size Equal to 10 Employees

Sub-sample	Obs.	Var[ $\log(y)$ ]	Var[ $\log(y_{KH})$ ]	Var[ $\log(y_{DKH})$ ]	Success $_{KH}$	Success $_{DKH}$
All	79	1.26	.52	.78	.42	.62
OECD	22	.047	.030	.056	.65	1.2
Non-OECD	57	.91	.36	.49	.39	.54
Africa	22	.75	.25	.27	.33	.36
Americas	23	.39	.20	.34	.50	.86
Asia and Oceania	18	.64	.32	.63	.49	.98
Europe	16	.16	.036	.073	.23	.48

Table 6: Success in Experiment with Minimum Size Equal to 50 Employees

Sub-sample	Obs.	Var[ $\log(y)$ ]	Var[ $\log(y_{KH})$ ]	Var[ $\log(y_{DKH})$ ]	Success $_{KH}$	Success $_{DKH}$
All	79	1.26	.52	.67	.42	.53
OECD	22	.047	.030	.049	.65	1.0
Non-OECD	57	.91	.36	.45	.39	.50
Africa	22	.75	.25	.26	.33	.35
Americas	23	.39	.20	.30	.50	.75
Asia and Oceania	18	.64	.32	.52	.49	.81
Europe	16	.16	.036	.058	.23	.37

Table 7: Success in Experiment with Only Mean Information

Sub-sample	Obs.	Var[log(y)]	Var[log(y <sub>KH</sub> )]	Var[log(y <sub>DKH</sub> )]	Success <sub>KH</sub>	Success <sub>DKH</sub>
All	79	1.26	.52	.71	.42	.56
OECD	22	.047	.030	.042	.65	.90
Non-OECD	57	.91	.36	.45	.39	.49
Africa	22	.75	.25	.26	.33	.34
Americas	23	.39	.20	.29	.50	.74
Asia and Oceania	18	.64	.32	.56	.49	.87
Europe	16	.16	.036	.054	.23	.35

Table 8: Success in Experiment with Many Sectors

Experiment	Obs.	Var[log(y)]	Var[log(y <sub>KH</sub> )]	Var[log(y <sub>DKH</sub> )]	Success <sub>KH</sub>	Success <sub>DKH</sub>
One sector	32	0.41	.14	.23	.33	.55
Multiple sectors	32	0.41	.14	.19	.33	.46

Figure 1: Comparison U.S. Multinationals — BEA versus Dun & Bradstreet  
 Figure 1a: Sales of U.S. Multinationals Subsidiaries  
 Figure 1b: Number of U.S. Subsidiaries

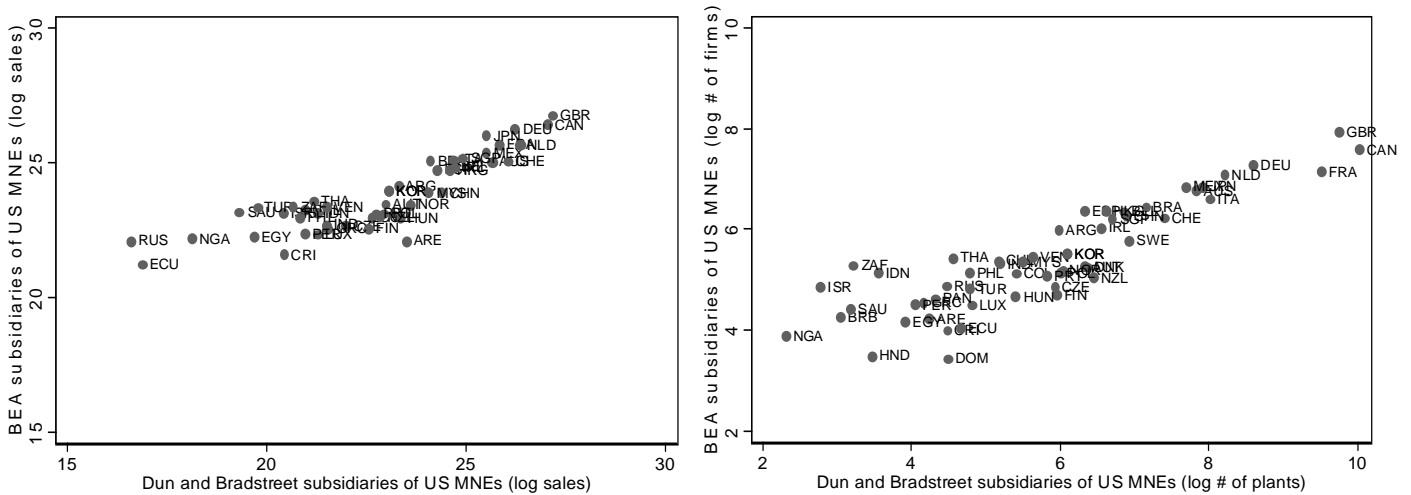




Figure 2: Mean of Establishment Size against Income per Worker

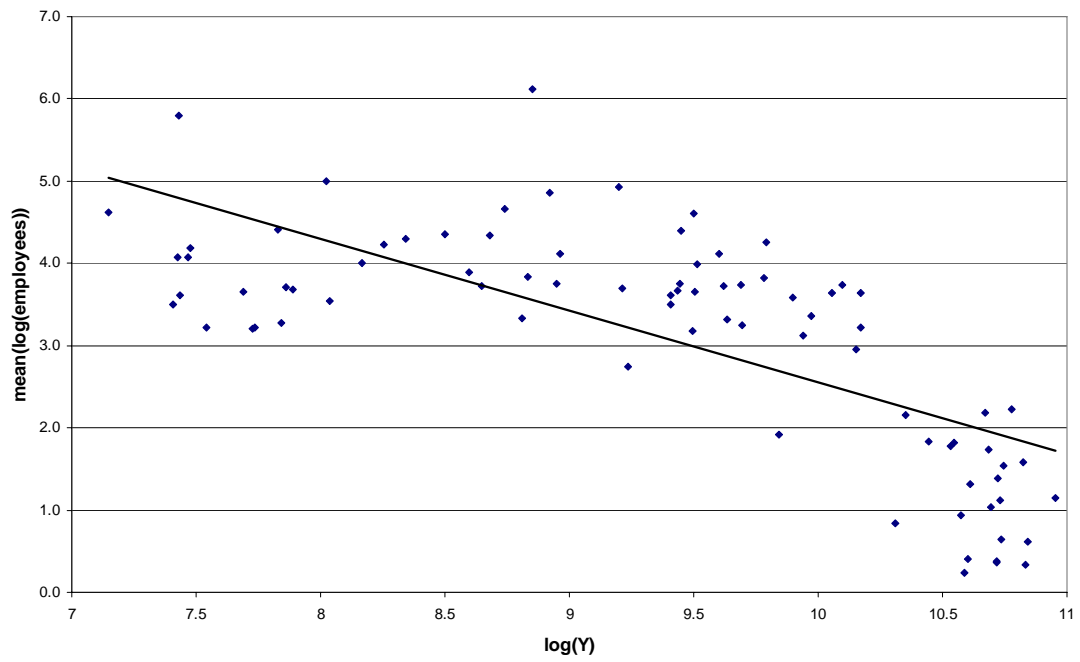


Figure 3: Coworker Mean of Establishment Size against Income per Worker

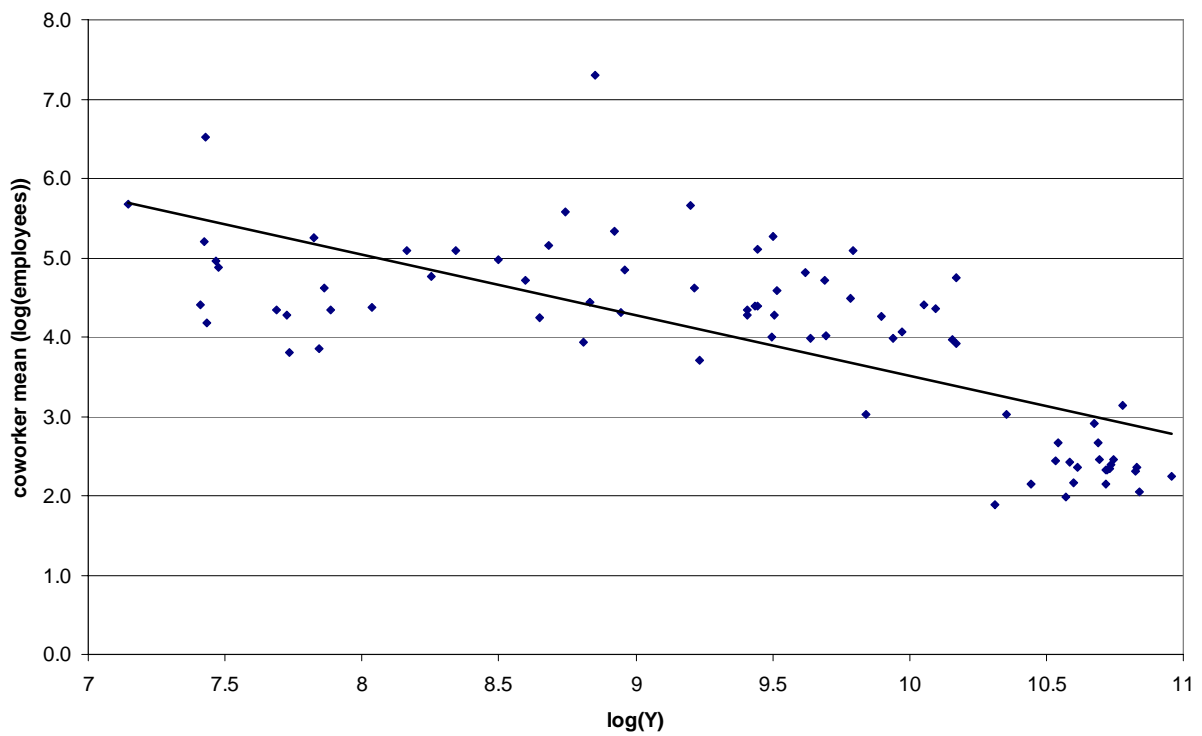


Figure 4: Variance in Establishment Size against Income per Worker

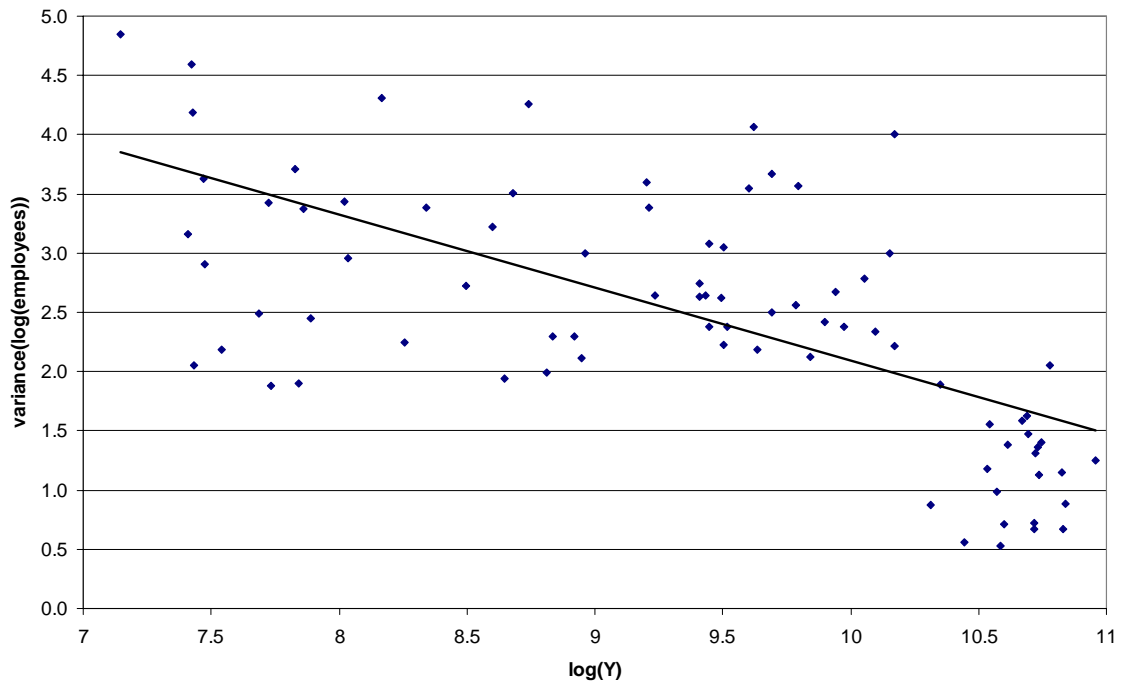


Figure 5: Skewness of the Establishment Size Distribution against Income per Worker

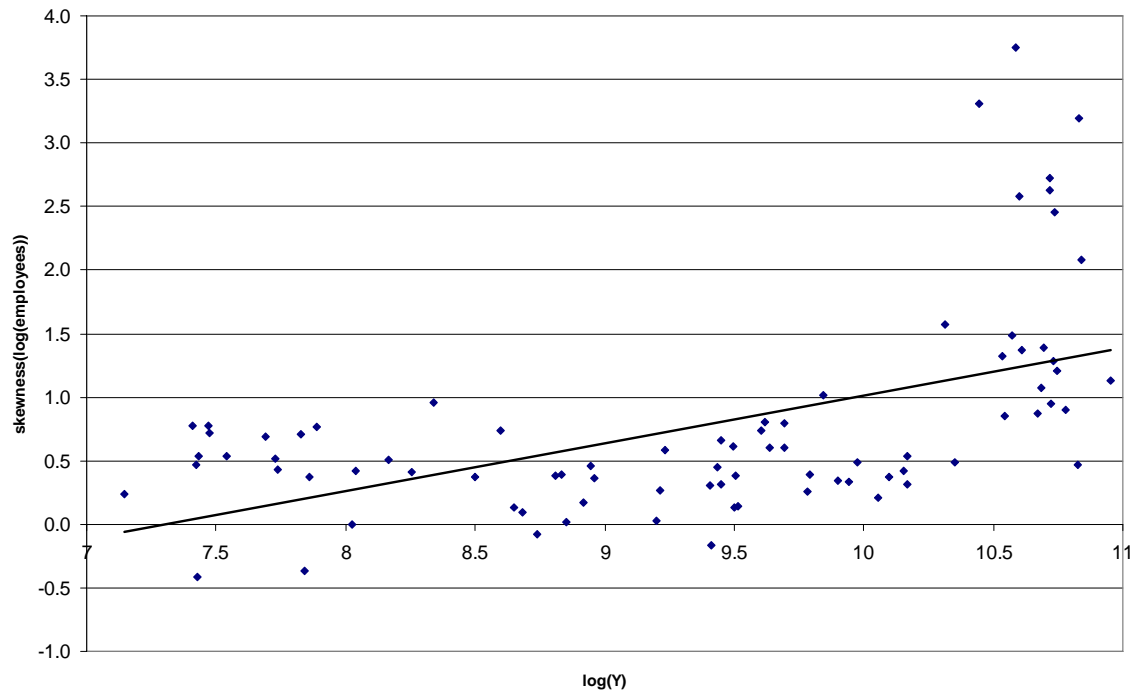


Figure 6: Mean of Establishment Size against Market Size

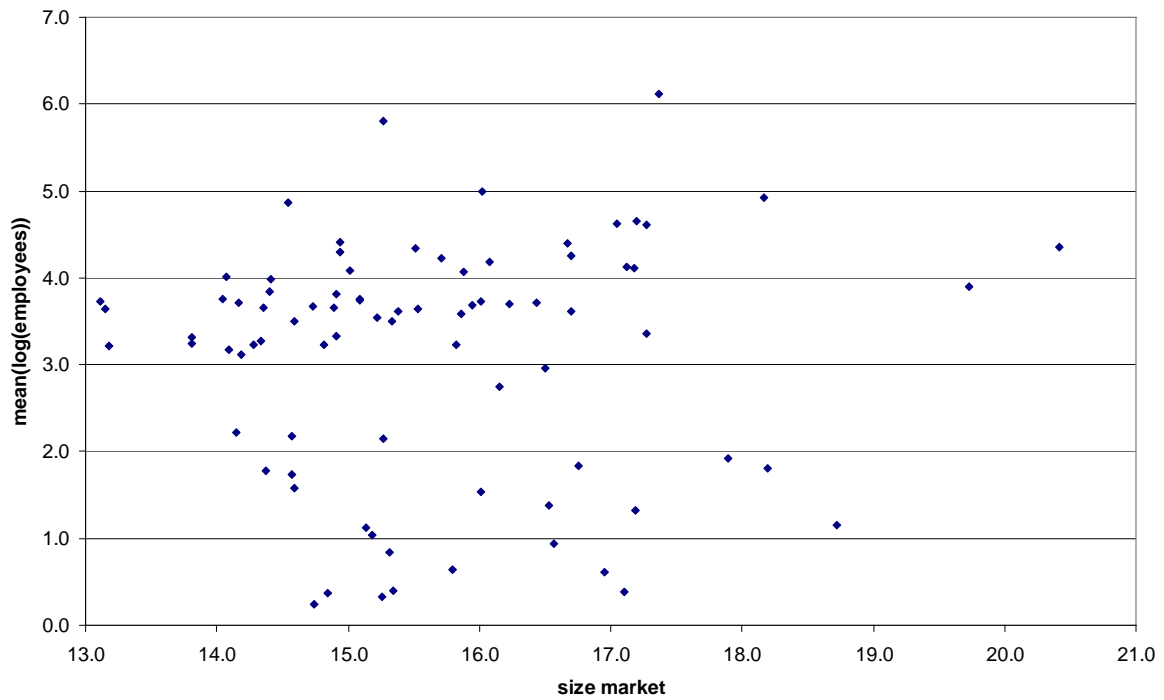


Figure 7: Histograms of Selected Countries

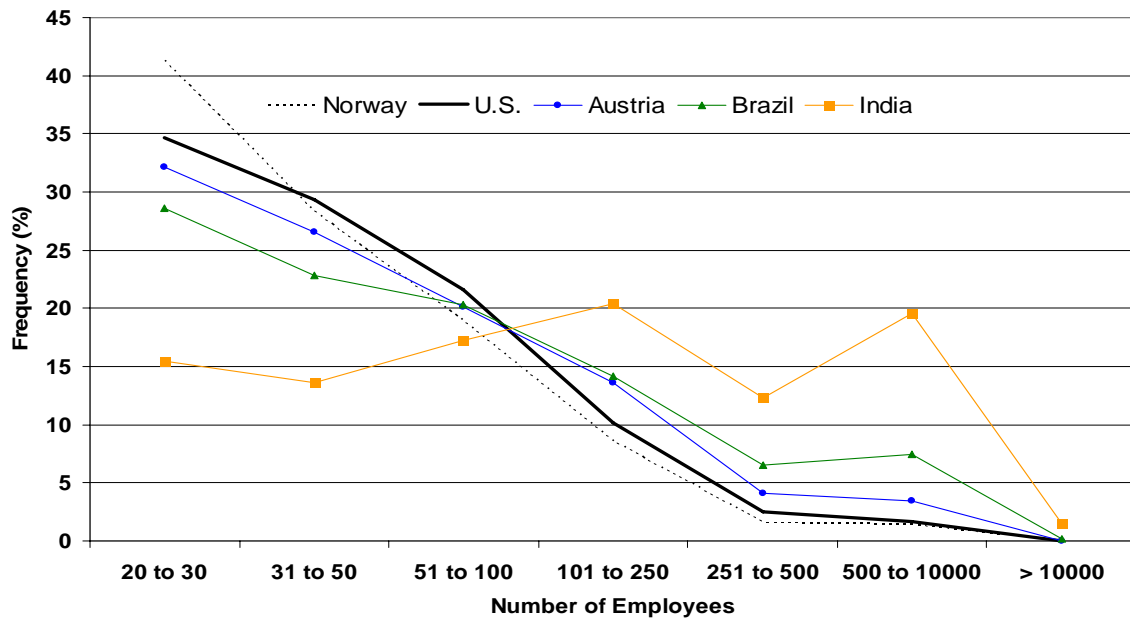


Figure 8: Mapping Histograms

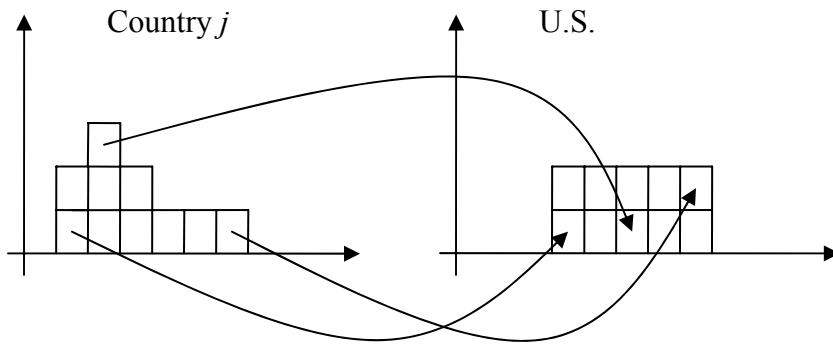


Figure 9: Establishments' Productivities

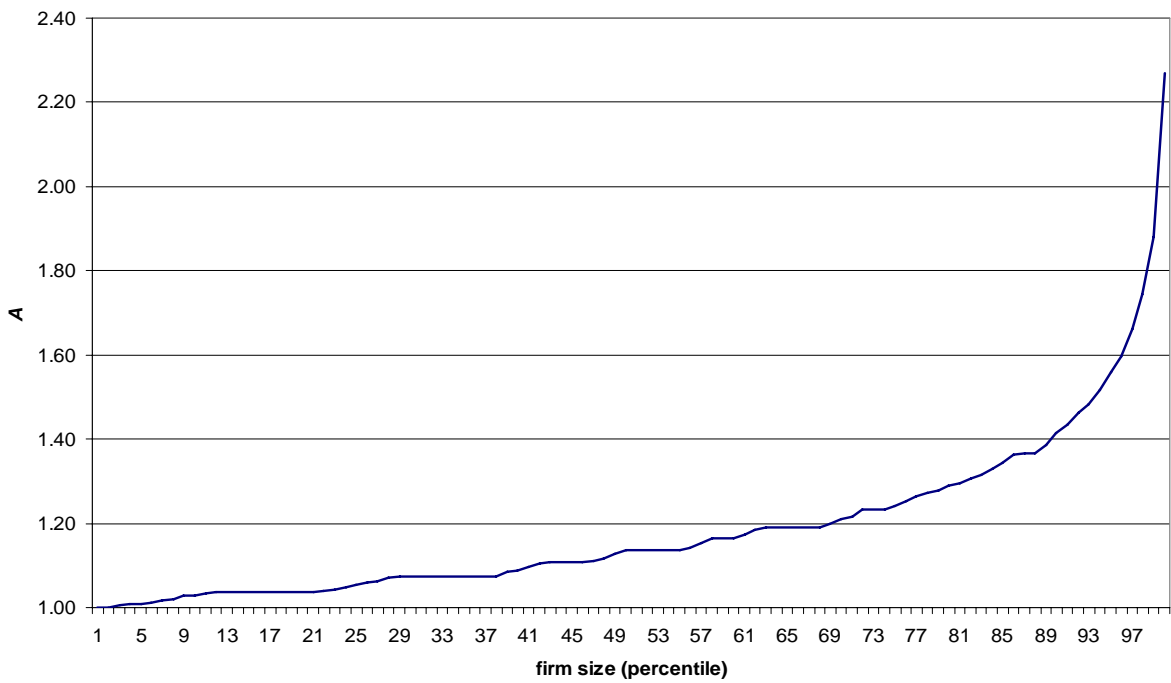


Figure 10: Tax Distortions for Sample Countries

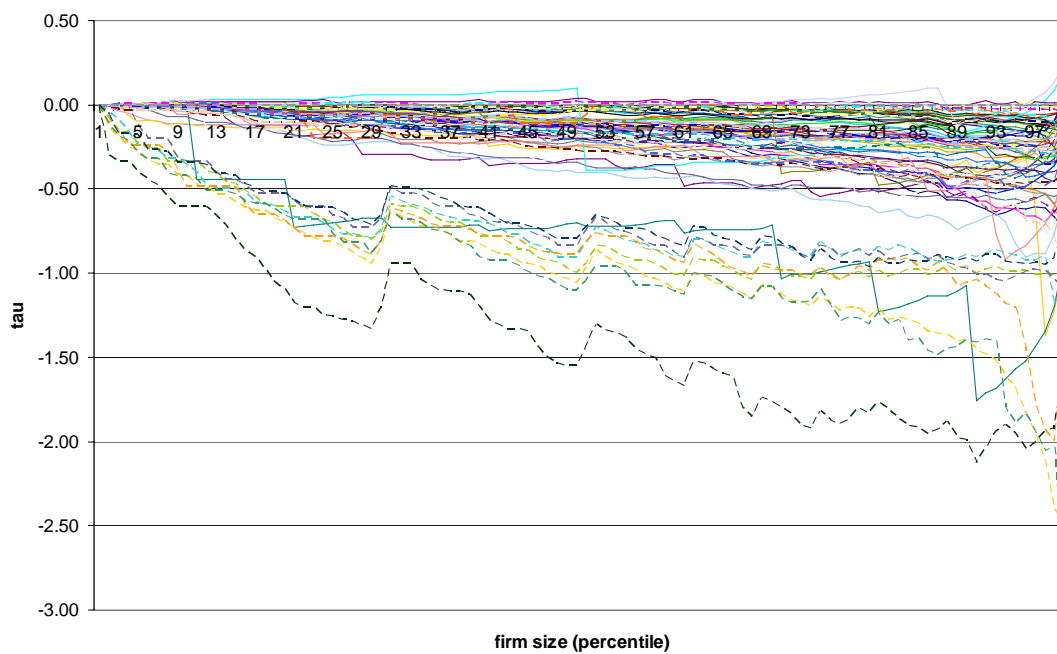


Figure 11: Misallocation Model against Income per Worker

